

GRAND DESIGNS

CREATIVITY IN HOTEL INTERIORS

inside

NEWS

IAI AGM report

INTERVIEW

Where Are They
Now? David Martin

FEATURES

Spec-breaking
BIM



key
ULTRA™

MAKE IT
UNION



keyULTRA™ has evolved...

Master keying expertise, value and choice, in one patented solution

6
PINS

An exclusive 6 pin system using patented DuraPIN™ technology, keyULTRA™ ensures your clients and their businesses remain secure.

NEW

keyULTRA™ is now available in a choice of six aesthetically pleasing, high specification finishes to suit your customers' needs.



Our master keying calculating and expertise is second to none, with a dedicated department ensuring simplicity and value with every suite.

Make the right choice... make it UNION.

For further information please visit www.uniononline.co.uk/keyultra
or contact us on 0845 223 2124

UNION

ASSA ABLOY

ASSA ABLOY, the global leader
in door opening solutions

Trusted by **Professionals**



CONTENTS

Spring 2017

NEWS AND VIEWS

News	04
GAI and IAI news	10

FEATURES

Report from IAI AGM	14
Interior design in hotels	16
Profile: David Martin	22
Spec-breaking	26

TECHNICAL

BIM	29
-----	----

NEW PRODUCTS

New launches this quarter	32
---------------------------	----

BACK DOOR

Apple to move to Battersea	34
----------------------------	----

EDITORIAL PANEL:

Neil Fisher

GAI Director

Tel: 020 7033 2841

Email: neil.fisher@gai.org.uk

Marios Christodoulou

GAI Marketing Manager

Tel: 020 7033 2843

Email: m.christodoulou@gai.org.uk

Maria Powell

President

Email: mpowell@lorientuk.com

Liz Male MBE

Director Liz Male Consulting

Tel: 01234 712279

Email: liz@lizmale.co.uk

TECHNICAL MANAGER:

Douglas Masterson

Tel: 0330 1234 073

Email: douglas.masterson@gai.org.uk

DESIGN AND PRODUCTION:

Atom Publishing

Tel: 020 7490 5595

www.atompublishing.co.uk

EDITOR:

Nicky Roger

Tel: 07704 336835

Email: nicky@atompublishing.co.uk

ADVERTISING MANAGER

David Smith

020 7490 5595

dave@atompublishing.co.uk

ART EDITOR:

Heather Rugeley



aij is published by The Guild of Architectural Ironmongers.
BPF House, 6 Bath Place, Rivington Street, London EC2A 3JE.
Telephone 020 7033 2480. Website: www.gai.org.uk

Although this magazine is the official publication of the Guild of Architectural Ironmongers, claims and opinions expressed by contributors and advertisers do not necessarily reflect the official view of the GAI. Copyright The Guild of Architectural Ironmongers 2007 ISSN 0959-986x



LEADING MEDICAL INSTITUTE OPTS FOR COPPER

The prestigious Francis Crick Institute research facility, in the heart of London's Knowledge Quarter, has incorporated antimicrobial copper door furniture throughout its laboratory and visitor areas.

The Institute is an ambitious collaboration of six founding research partners: the Medical Research Council, Cancer Research UK, Wellcome, University College London, Imperial College London and King's College London. The world-class biomedical research facility aims to discover how and why disease develops in order to find new ways to prevent, diagnose and treat conditions such as cancer, heart disease and stroke, as well as infections and neurodegenerative conditions.

Specified for use within a series of laboratory environments and high traffic areas are antimicrobial copper pull handles and push plates from UK manufacturer and specifier Allgood's Contego range. In addition, Contego lever handles and bathroom turns have been used for WC doors and storage cupboards throughout the building.

Contego is made from a solid copper alloy with the appearance of stainless steel, offering the aesthetics desired by the architects combined with the hygienic properties of copper.

Designed by architects HOK with PLP Architecture, the overall building concept emphasises visual permeability, collaboration and

innovative lab planning. A technically complex and challenging construction project, the Crick has been designed to the highest specifications to ensure the most sensitive biomedical research can be undertaken within the facility. Constructed by Laing O'Rourke and supported by engineers, Arup and AKT II, the facility is 170m long, comprising almost 1m sq ft of floor space over 12 floors, one third of which are below ground.

Copper is a powerful antimicrobial with rapid, broad-spectrum efficacy against bacteria and viruses, and has been shown to kill disease-causing pathogens, including influenza A, E.coli and norovirus, and even those with antibiotic resistance.

Touch surfaces made from solid antimicrobial copper are used in hygiene-sensitive environments around the world.



POWER COMPANY ENERGISED BY FIRE DOORS

ScottishPower has installed a compliant fire door solution from Abloy to secure its Battery Rooms.

The energy company required a number of fire doors across four sites with a fire-resistance rating used as part of a passive fire protection system, with the aim of reducing the spread of fire and enabling safe egress from a building.

The main priority was maintaining the safety of staff and it was also important for the doors to be aesthetically pleasing. Furthermore, it was imperative that the locking elements of the hardware were fire-rated.

Abloy UK's range of steel fire doors come with a non-combustible core, include single and double leaf configurations and can be certified latched or unlatched depending on size and configuration.

The doors are tested to BS 476 Part 22 and EN 1634-1: 2014 as well as being Certifire compliant.

For more information on antimicrobial copper, visit www.antimicrobialcopper.org.

A short video telling the story of Contego and its installation at the Francis Crick Institute is available on YouTube. Search for Contego Francis Crick to view.

AWARDS HAT TRICK FOR IRISH LOCKSMITH

Crothers Security has been named Locksmith Of The Year Award at the Irish Security Institute Association (ISIA) Awards 2016.

Each year the ISIA recognises Irish security companies and their employees who have demonstrated exceptional services to customers.

The awards cover all aspects of security – from manned guarding through to electronic security and locksmiths.

The locksmith sector in the Irish market is experiencing rapid change with the advent of Private Security Authority (PSA) licensing due for implementation in 2017.

Additionally, new Building Regulations will come into force next year that will clearly define the correct product combinations for escape and fire door applications, and align them with European Harmonised Standards.

This year three locksmiths were shortlisted for the Locksmiths Award, sponsored by Abloy UK.

Crothers Security was set up by Kevin Crothers in 1980 and it is the third time the business has won the ISIA Locksmith Of The Year award. Pictured below are Martin Crothers (left) and Steven Crothers (right) with Pat Jefferies of Abloy UK (centre).



RECORD NUMBERS EXHIBIT AND ATTEND ARCHITECTURAL TRADE FAIR

ARCHITECT@WORK, the annual two-day architectural trade fair, had its fifth successful showing at Olympia National Hall at the end of January with nearly 2,000 architects, specifiers and designers attending, a 30 per cent rise in footfall from 2016.

Over 100 leading European architectural suppliers showed their new products. All exhibitors went through a rigorous selection process, with an external judging panel overseeing the product selection, to ensure that this is one of the UK's most highly respected trade shows of its kind.

One of the most popular elements of the show was the talks programme,

which saw hundreds of people attend to see big names such as Roger Ridsdill Smith, Foster+Partners; Julia Barfield, Marks Barfield, Jonathan McDowell, Matter Architecture and Ben Addy.

To honour the show's theme of water, the SCIN GALLERY presented 'Wateration' focusing on how water is used and imitated in design. The exhibition showcased every aspect from elements that come from water, such as seaweed, to materials that repel water used in coatings and paints.

Another talking point at this year's show was the Matière grise exhibition by Pavillon de l'Arsenal which urged the construction trade to use more "grey matter" and fewer raw materials.



PHONE BOX OFFICES CALL ON ABLOY FOR SECURITY

Former red phone boxes redesigned as quirky work stations will be springing up over major UK cities in the next two and a half years. The company responsible for ensuring the boxes are secure – ART – appointed Abloy UK to create a bespoke locking solution to secure up to 1,000 Pod Works workstations specifying the EL490 electric motor lock alongside interior and exterior keypads.

The Pod Works workstations have been created using iconic red BT telephone boxes, and each typically includes Wi-Fi, plug sockets, printer, scanner, VOIP phone and free coffee and tea.

The first pod was installed in London's Russell Square.

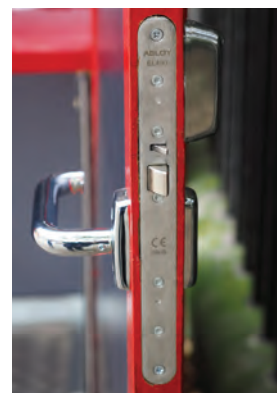
Justin Morley, managing director, ART Security Solutions, said aesthetics were as important as safety: "Security was paramount on this project – the lock had to work effectively, look good and be reliable. We also needed a lock that had multiple functions, providing certain levels of guaranteed exit in lots of different scenarios. The EL490 from Abloy was chosen as it had

unique dimensions that matched the very exact amount of space available for door hardware to be fitted – as well as offering all the safeguards we required."

Paul Radden, senior product manager, at Abloy UK, added: "The EL490 is a motor lock and has the unique feature of electronic handle control. For the 'Pods', we have used the EL490 alongside interior and exterior keypads that allow access, logging the user in and out of the 'Pod'.

"If the power fails or there is an emergency, the handle becomes live and the user can exit."

View a video case study at youtu.be/ryHhnXoC708





LUXURY SINGAPORE TOWER SPECIFIES UK DOOR CLOSERS

More than 600 of Astra's 3000 Series concealed door closers have been specified and fitted at DUO, an award-winning contemporary twin-tower development in Singapore. The stunning mixed-use development is the showpiece building in the significant Ophir Rochor corridor redevelopment.

Designed by architect Ole Scheeren and scheduled for completion in 2017, DUO was awarded a Silver award in the Best Futura Project category at MIPIM Asia Awards. It is an integrated development comprising premier residences, Grade-A office spaces, a retail gallery and five-star hotel.

Astra's 3000 Series size 3 concealed hinge-edge door closers were supplied for the entrance doors for apartments in the DUO towers. The closers have enabled the architects to maintain the sleek minimalist lines that the aesthetic called for, while complying with all appropriate local fire and safety regulations.

ARCHITECT OF THE YEAR HONOURS WORK IN SECTORS



The 14th edition of the BD Architect of the Year awards took place in March at London ExCeL alongside Ecobuild, the UK's largest event for specifiers across the built environment.

The BD AYAs are distinguished from other architectural awards by virtue of honouring overall achievement within a particular sector. This provides a premise on which to compare the work of different architects. With two new categories for 2017 bringing the total awards to 15, the winners were announced by comedian Marcus Brigstocke. Categories include education, sustainability, hospitality, sports and leisure and office (sponsored by GEZE) as well as the The Schueco Gold Award – The Architect of the Year which was picked up this year by Reiach and Hall Architects for its work on City of Glasgow College.

See the winners at <http://awards.bdonline.co.uk/the-2017-winners/>



BAU BOASTS BIGGER AND BETTER



A quarter of a million people attended BAU 2017, the World's Leading Trade Fair for architecture, materials and systems, this year, and with over 2,000 exhibitors from 45 countries, it also set a

new record for the number of exhibitors.

The fair's 17 exhibition halls were characterised by elaborately designed stand presentations – many two-stories high.

Market research showed 95 percent of exhibitors gave the fair top marks for quality and they reported that the willingness to make concrete business deals has improved compared to 2015. Almost all exhibitors (98 percent) plan to participate again in 2019. Visitor satisfaction was between 90 and 100 percent in all categories.

Key themes this year were digitalisation and smart building – from door handles with finger scanners to energy-generating facades and system solutions for completely connected smart homes. The next BAU will feature two new halls when it takes place at the Messe München in January 2019.

BAU has recently announced it will stage a BAU China fair having partnered with Fenestration China, China's most important trade fair for windows, doors and facades. The new joint platform Fenestration BAU China will take place in Shanghai in November.

NEW SMART LOCK



CL4500
electronic

Smart locks get smarter

The new CL4500 lock range combines smart technology with traditional keypad and card access options suitable for a wide range of applications, from building managers to home rental owners.

Utilising CodeLocks NetCode technology, the locks offer flexibility and convenience that enable businesses to recognise new levels of convenient access control without compromising on security.

Program and operate locks via your smartphone, generate and send codes for easy access, issue smart cards for alternative entry, track and control with audit trail.

To find out more about CodeLocks Smart Locks visit www.codelocks.co.uk

COMPLETE CONTROL **WHEREVER YOU ARE.**

+44 (0) 1635 239645
www.codelocks.com
sales@codelocks.com



CODELOCKS
control + convenience

AMERICAS • UNITED KINGDOM • EUROPE • MIDDLE EAST & AFRICA • ASIA PACIFIC

GEZE BREATHES NEW LIFE INTO CIVIC ICONS



GEZE door hardware has been central to two refurbishments of key town centre venues recently.

The Birmingham Repertory Theatre previously shared an entrance with its neighbour, the Library of Birmingham, an iconic building created as part a £188m redevelopment in 2013.

However, The Rep's growing audiences required direct access so operations manager Nigel Cairns commissioned GEZE UK to identify the best options. In turn, GEZE UK hired Glassolutions as its 'co-star' to undertake all the glazing work required for the venture.

The result was a circular sliding door – etched

'hello' and 'cheerio' to herald entrance and exit – which used a Slimdrive SCR automatic operator with a 360° drive mechanism.

GEZE UK also created a second entrance to the theatre's Marmalade Bistro and Bar within its famed arched facade. The pair of automatic swing doors operated by Slimdrive EMD-f's were installed street side, and a single sliding door powered by GEZE's Slimdrive SL NT automatic operator, inside which creates a further draught lobby.

Over in Wakefield the installation of automatic doors powered by GEZE operators has been part of the refurbishment of the town's Grade 1 listed Victorian Town Hall.

The creation of a glazed inner lobby, within an original open archway which frames the town hall's traditional heavy, wooden-leaf doors, provides access to a waiting area.

A Slimdrive SL NT operator powers these bi-parting doors which incorporate etched glass panels. The work on the automatic doors was undertaken through Laidlaw and Door System Installations.

Also fitted to the building are six pairs of Slimdrive EMD-f electromechanical swing door operators. Despite their period appearance, the doors were a bespoke addition manufactured by Longdon Doors to blend with the Victorian design aesthetic.

CLIQ® REMOTE WINS HOUSING PRODUCT INNOVATION AWARD



CLIQ® Remote from ASSA was named 'Most Innovative New Product' in the 2017 Housing Innovation Awards.

An electromechanical cylinder offering effective key management while protecting against potential security risks, CLIQ Remote® is transforming access control in the social housing sector.

The technology allows housing organisations to give key holders – regardless of location – remote access to a property. Each key can be programmed and updated individually, which means key holders have access only to the areas relevant to them and during their allocated time or dates.

CLIQ® Remote is also reducing the time properties

stand vacant between tenancies. By eliminating the need for physical key handovers, the technology removes workflow delays, ensuring maintenance staff or contractors are able to access properties as and when needed.

Social housing organisations can also dramatically increase rent and council tax, due to quicker re-let times and improved working practices. Rotherham Metropolitan Borough Council began using the system 12 months ago, and is seeing time savings of approximately 40 hours a week and an additional £60,000 a year in rent and council tax.

See other award winners at www.housinginnovationawards.co.uk

ASSA ABLOY FREE TRAINING

ASSA ABLOY Access Control is offering a free one-day training course on its Aperior® wireless locking technology – a smart technology that enables mechanical locks to be wirelessly linked to existing access control systems. The course provides an insight into the technological advantages of the system, the different versions available, how it operates, product specification and best practice for installation.

The course is run at the ASSA ABLOY Academy in Wolverhampton and candidates can combine the course with a site visit to the manufacturing facility. The next available training dates are: 26 April, 31 May, 28 June, 26 July, 27 September, 25 October, 29 November, 27 December. Lunch is provided. To book email claire.jones@aassaabloy.com

BREXIT COULD LEAD TO ARCHITECTURAL BRAIN DRAIN, WARNS RIBA

Over a third of UK-based architects from EU countries are thinking about leaving the country after the Brexit vote, according to the latest research from the Royal Institute of British Architects.

The RIBA Member Brexit Survey shows that over 65 per cent of British architects are concerned about how exiting the EU may impact their business.

Of those surveyed, 80 per cent believe access to skilled staff from around the world is vital to the success of UK architecture. And as many as 40 per cent of non-British EU nationals have considered leaving the UK following the referendum result.

Since the referendum in summer 2016, 60 per cent of UK architects have seen work delayed and 37 per cent have reported cancelled projects.

The RIBA has released a report recommending five key actions the UK government should take. The government must ensure the UK:

- › Has access to the best talent and skills
- › Signs trade agreements that open access to foreign markets
- › Provides support for education, research and innovation
- › Takes action to address the UK's competitiveness crisis
- › Maintains common standards and low compliance costs.

ALLGOOD SUPPLIES BOTH DOORSETS AND IRONMONGERY IN GLASGOW



Project Management and Design at Glasgow City Council has utilised Allgood ironmongery and doorsets for a residential building designed for Glasgow City Council, Glasgow Health and Social Care Local Partnership.

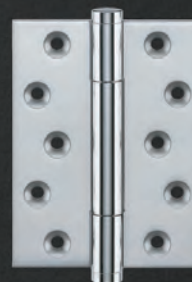
The project contractor City Building (Glasgow) LLP appointed Allgood for both elements without substitution.

Ensuring one point of contact for the complete ironmongery and door package enabled any queries to be answered swiftly and the delivery of doorsets and ironmongery to be successfully co-ordinated and delivered on time. Co-ordinating purchases also meant door compatibility for the desired ironmongery was possible.

Doorsets were provided for studio flat entrances, ensuites, corridor doors and office doors, and incorporated Allgood Alite ironmongery.

SIMONSWERK
HINGE TECHNOLOGY

TRITECH HIGH PERFORMANCE AND STRENGTH



TRITECH

- › solid brass, concealed bearing hinge
- › high performance CE marked
- › weight carrying capacity to **160kg**
- › available with 7 designer finials
- › various finishes including PVD

t: +44 (0)121 522 2848
e: info@simonswerk.co.uk
www.simonswerk.co.uk



NEIL FISHER • GAI TALK

// My new role at GAI started with the Education Awards, and already we are approaching Easter with three more large and important events under our belt in the first quarter of the year.



This time of year is usually when people start to plan their own and others' training needs, identifying from business plans what they require to keep on top of their business activity.

Therefore if it's been a while since you have looked at what the GAI has to offer on education, training and CPD, check out the prospectus on the GAI Education Hub.

Established over many years, and constantly being updated to reflect changes in the industry, the GAI education portfolio genuinely has something to offer you at any stage in your career.

From the Foundation in Hardware for entrants into our industry, to the Certificate in Architectural Hardware and GAI Diploma, to the many CPD modules which help towards Registered Architectural Ironmonger (RegAI) status, the Guild's education programme is designed for everyone working in or with architectural ironmongery, regardless of their educational background or location.

I'm also very interested in taking the GAI's educational products into other markets, as there is so much we can offer other construction professionals, builders' merchants, hardware retailers, tradespeople and students beginning their careers in the construction industry.

Work has already begun on building closer links with other professional bodies who may be able to take some of our educational and training provision to their own members, while at the same time identifying courses we could take and make available to our members.

We're also hoping to develop closer links with the Further Education sector. We will develop a pilot scheme with a number of colleges around the country (and possibly some abroad) to enable new construction students to access our online Foundation course. We hope to open students' eyes to the world of architectural ironmongery and at the same time bring some added value to their existing courses, something that is always being sought in the sector.

Neil Fisher
Director of the GAI

NEW WAYS TO ACCESS CPD LAUNCHED

The GAI has made it easier to keep pace with industry trends and knowledge by introducing a more flexible CPD programme.

In response to feedback from members, the GAI and IAI have created a new process for learners to have more control over how they gain CPD points.

Different methods of learning will be introduced on a regular basis to meet the needs of their membership worldwide.

Under the rules of the new scheme, Registered Architectural Ironmongers (RegAIs) will still be required to gain or maintain their RegAI status over a one calendar year period, and during this time each individual must still collect 10 CPD points which are to be recorded on a log sheet.

But now, some of those points may be gained through additional routes, such as personal knowledge, development at trade shows and exhibitions, reading industry related articles, and learning via GAI and IAI approved podcasts and videos from trade bodies including the RIBA and BSI.

Rachel Tipton, GAI training and development manager said: "CPD is the single most important way in which we each develop and enhance our abilities,

and set ourselves apart as architectural ironmongery professionals. In an industry like ours where standards are changing all the time, to neglect CPD is to neglect the needs of our customers, our career development and individual status in the industry.

"However, we recognise that CPD is also about a personal and bespoke professional journey, and the same programme of CPD obviously does not provide the same fit for everyone.

"That's why the GAI and IAI have listened to the concerns and suggestions of its members on the issue of CPD point collection, and have decided to introduce new ways of collecting points in 2017. Our CPD learning will be structured to meet the individual developmental and personal learning needs of all of our members."

Further information on the GAI education programme, including CPD, can be found at www.gai.org.uk/education-4/the-education-hub





The shortlist for the GAI/RIBA Specification Awards 2016/17 is:

Commercial:

Design Museum, London –

Allgood plc and John Pawson Architects

William & Son flagship store, London –

Glutz UK and Shed Design

Leadenhall Building, London – Allgood plc and Rogers Stirk Harbours & Partners

Airedale International Air Conditioning, Leeds – Em-B Solutions and Darnton B3 Architecture

Residential:

Hop House, London – John Planck Ltd and Brimelow McSweeney Architects

City Wharf, London – Doorview Ltd and Fraser Brown McKenna Architects

Kings Gate, London – izé and Lynch Architects

Orme Square, London – izé and Pilbrow & Partners

The Pathe Building, London – Allgood plc and Sheppard Robson

Public Health & Education:

New Bodleian Library, Oxford – John Planck Ltd and Wilkinson Eyre

Eastwood Village Primary School, Rotherham – Em-B Solutions and Rotherham MBC

Acre Mill, Huddersfield – Em-B Solutions and Jefferson Sheard Architects

Academic Wing, Wolfson College, Oxford – D Line Eisenware and Berman Guedes Stretton Architects

Hospitality:

The Arts Club Hotel, London – Harbrine Ltd and Sagrada

Berkeley Hotel, London – izé and Heah & Co Design Consultants

Wombat's City Hostel, London – Hafele UK Ltd and Andrew Mulroy Architects

International:

BASF Learning Campus, Rochester Park, Singapore – Key Technologies and Forum Architects Pte Ltd

Midfield Concourse, Hong Kong – Key Technologies and Aedas Group International Ltd

Four Seasons, Dubai – Allgood plc and WATG
Shantou University Medical College, China – Key Technologies and Herzog & de Meuron Basel Ltd

SPECIFICATION AWARDS SHORTLIST ANNOUNCED

The shortlist has been published for the biennial GAI/RIBA Specification Awards, the most prestigious scheme to recognise the outstanding results achieved by architectural ironmongers and their clients worldwide.

Organised by the GAI in conjunction with the Royal Institute of British Architects (RIBA), the awards reward excellence in the specification of architectural ironmongery in residential and commercial buildings, public sector health and education buildings, hospitality buildings such as hotels, and international projects outside the UK and Ireland.

Architects, specifiers, building contractors, clients and their architectural ironmongery advisers and suppliers across the world

have nominated their projects, and the winner will be announced at the RIBA headquarters in London on 30 March.

Maria Powell, president of the GAI, says: "The calibre of this year's shortlist is remarkable. We had heard of some inspirational projects being worked on by GAI members but it's only when you start reading about them and then going out to visit the nominations that the full brilliance hits home.

"These awards are unique because they reward the whole specification team, highlighting the importance of the professional partnership between architectural ironmongers and their clients."

All shortlisted projects now go forward to the finals. For each category there will be a winner, second and third place. The judges will also decide on an overall 'winner of winners'.

IAI ELECTS NEW VICE CHAIR

The IAI has appointed Joanne Milne-Rowe (left) as its new vice chair. The appointment was announced at the IAI's AGM in March.

Jo has been in the industry for over 19 years with a wealth of experience in architectural hardware, mechanical

security and electronic access control.

For the past 12 months she has served as chair for the South East region of the IAI, alongside her current role as business development manager at Codelocks.

Jo will now step down from her position of regional chair and will focus on supporting the chair across national activities.

Jo said: "I hope that as vice chair I can play a role in changing certain perceptions about the industry and encourage the next generation of talent to seek a career in our ever-changing sector.

"The Institute is its members and I want the members to know that I'm here to listen to their thoughts and ideas for taking the IAI forward."

Mario Del-Signore, chair of the IAI said: "Jo has already been recognised for her commitment to improving communication and increasing engagement among members in her role as chair of the south east region. I have no doubt that she will continue to take the Institute from strength to strength and look forward to working with her to promote the IAI's work."



INSTITUTE NAMES ITS STAR PLAYERS

The best industry professionals and most promising newcomers within the door hardware industry were recognised at the IAI Awards in March.

The IAI Fellowship Award is always given to an individual who has shown a longstanding and ongoing commitment to the IAI over at least 10 years, and who is still actively involved within the industry and Institute.

This year's winner was Peter Haywood (pictured), former area sales manager for GEZE UK where he worked for 17 years before his retirement last year.

The Paul Lewis Award for Customer Service is given to an individual,

group or company that has made an outstanding commitment to customer services throughout the year. The award is sponsored by Royde & Tucker, and went to Paul Barrows, commercial manager for UK and Ireland for Assa Abloy Security Solutions.

The GAI Award for Services to the Institute is awarded to a current IAI member who has made a recent and visible contribution at branch level. This year's winner was Paul Grech, managing director of Glutz UK Ltd.

The Promising Ironmonger of the Year award went to Tom Davis, residential category manager at Carlisle Brass Ltd.



www.secure-arc.com

New & Improved Classroom Function Cylinder!

ARC's New Classroom Cylinder can be easily handed on Site by Simply switching over the Classroom pin from one chamber to another....or completely remove for Anti-Barricade function only.....easy!



**Secure ARC Ltd, Unit 36 Waterloo Ind Est, Bolton, BL1 2TN
Tel:01204 393212 Fax:01204 521752**

This award is given to the brightest ironmongers in the early stages of their careers. They could be involved in scheduling, estimating, sales or a combination of them all, and the award also recognises they have the charisma and personality to inspire others.

Mario Del Signore, chairman of the IAI, said: "The IAI awards are always a joyous opportunity to put truly outstanding individuals and companies in the spotlight, and for them to receive the praise they deserve for their particular contributions in our sector."

The IAI Awards were given at a dinner following the Institute's AGM, an event that also included CPD opportunities for Institute members and an Ironmongers' Village area with new door hardware products on display.

See p14 for more news from the AGM.

GAI SUCCESS IN NEW BRITISH STANDARD

The GAI has been instrumental in the creation of a new British Standard. *BS 8613:2017 Finger Protection Devices for Pedestrian Doors – Specification* came into effect at the end of January. It is a standard that Jacky Sinclair, former technical consultant at GAI, campaigned hard for over an 18 month period, and which her successor Douglas Masterson continued to push for in his role as chair of the drafting panel for the BSI.

The new standard details the safety requirements and durability, strength and functional tests for finger protection devices for side hung and pivoted pedestrian doors with single or double swing.

"It really shows where the GAI as a Trade Association can make a difference as this will be the only Standard available to test finger protection devices for a commercial environment which will enhance the quality of a product, thus making a difference to people from a practical safety perspective," says Masterson.

Download the standard at <http://shop.bsigroup.com> (£116)

NEW MEMBERS

Proline Hardware Limited

■ Full

■ Ireland

Jarlath Lennon

jarlath@prolinehardware.ie

Norseal Limited

■ Full

■ UK

Michael Spoor

michael@norseal.co.uk

UNLOCKING THE DOORS OF OPPORTUNITY



SAFETY AND PERFORMANCE OF DOORSETS AND BUILDING HARDWARE

- New European Testing Laboratory
- Fire, Security, Environmental and Endurance Testing to UL, EN and BHMA Standards for Global Market Access



Learn more here:
bit.ly/uleulab

UL Door and Hardware Laboratory
Warrington, United Kingdom
E: BuildingLifeSafety.eu@ul.com
T: +44.1925.258.876
ul.com/buildingmaterials

UL, the UL Logo, and UL certification marks are trademarks of UL LLC © 2016. Other marks are the property of their respective owners.

PEOPLE, PRIZES AND CPD POINTS

This year's IAI AGM was a great success electing new positions, announcing awards and unveiling new CPD plans

The award-winning Casa Hotel in Chesterfield played host to the IAI annual AGM, with the event being well supported as ever with more than 100 architectural ironmongers and manufacturers in attendance. One of the key aims of this AGM was to communicate and highlight recent changes to the RegAI CPD programme in order to create new opportunities for Continuing Professional Development.

The Friday night programme featured an interactive quiz which unleashed the competitive spirit of all and which was kindly sponsored by CES UK.

The business side of the AGM commenced on Saturday with the annual return of the Ironmongers Village which presented a worthwhile opportunity for manufacturers to display their products. It also included the return of the new product showcase area. The coffee station, sponsored by Carlisle Brass provided welcome refreshment throughout.



IAI chair Mario Del-Signore started the formal proceedings with a welcome to all. He stated that the IAI membership survey in 2016 provided feedback on a need to widen the offering of our CPD Model and that this AGM will provide the opportunity for the IAI to communicate just how we have done this.

GAI president Maria Powell also welcomed all and praised the generosity of the sponsors of the event. Maria updated those present on some of the changes to the GAI over the past 12 months including the appointment of Neil Fisher as



THE WINNERS

Junior Award:

Lennon Reid

Promising Ironmonger of the Year:

Tom Davis of Carlisle Brass

Paul Lewis Award for Customer Services:

Paul Barrows of ASSA Abloy UK

GAI Award for Services to the Institute:

Paul Grech of Glutz UK

Fellowship of the Institute of Architectural Ironmongers:

Peter Haywood

GAI director, Marios Christodoulou as marketing manager and Moshin Rahman as education and Institute membership services officer.

Mario then introduced the new vice chair of the IAI Joanne Milne-Rowe who has been greatly involved in the Institute and was a recent chair of the South East Branch. The new branch chairs of South Central, Roy Buckingham and South East, Peter Haywood were also welcomed into their new roles.

Rachel Tipton, training and development manager of the GAI, detailed the new changes to CPD and highlighted the new opportunities for points collection. Some of these include: attendance at seminars or meetings staged by other trade bodies; attendance at trade shows and exhibitions; and participation in reciprocal RIBA CPD presentations or events. Rachel also updated all on the GAI education programme.

Douglas Masterson, technical manager of the GAI explained some of the ways they fulfil the aim of the technical pillar of the business which is "to provide our membership with a technical service as a real member benefit" he then presented a CPD on Building Information Modelling (BIM) which provided an opportunity for a CPD point towards RegAI.

Mario then brought the official business to a close and thanked all for their attendance.

The Saturday night, with the entertainment generously sponsored by Lorient featured the presentation of the four IAI annual awards which were, as ever, voted for by IAI members in a national voting process.

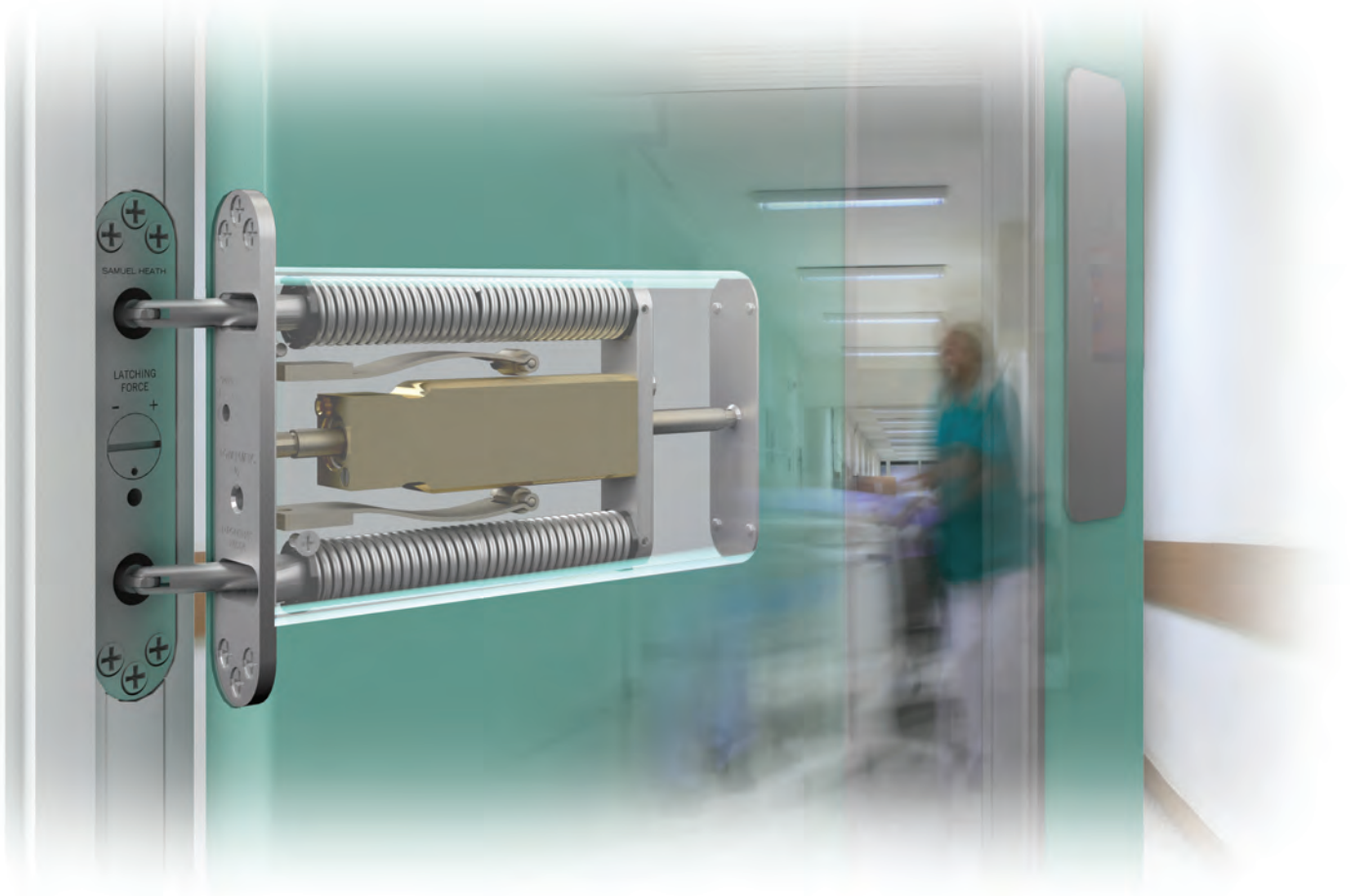
Once the awards were presented the dance floor beckoned for some, whilst the opportunity to network further was taken by others. Another successful IAI AGM came to a close. ■

ABOVE: Networking at the 'village' and new chair Jo Milne-Rowe. **BELOW:** Maria Powell GAI president and Mario Del-Signore, IAI chair with the IAI award winners



POWERMATIC®

Concealment when you want it
Performance where you need it



Designed and manufactured in the UK, Powermatic controlled, concealed door closers deliver exceptional performance as well as a host of benefits that surface-mounted closers cannot match:-

- Superior aesthetics
- Reduced risk of vandalism
- Suitability for anti-ligature applications
- Compliance with relevant fire performance standards for one-hour and half-hour fire doors
- Enable doors to meet accessibility requirements
- Perfect for hotels, healthcare, education, care homes, sheltered accommodation, commercial and many other situations.
- Available in standard and Free Swing models

Visit our new website: concealeddoorclosers.com

Tel 0121 766 4200 info@samuel-heath.com concealeddoorclosers.com

SAMUEL HEATH

since 1820

ROOM SERVICE

An increasing trend for sophisticated hotel interiors is good news for the ironmongery industry as guests demand design detail

Good hotel design has arguably become more important now than ever. Increasingly design literate guests are choosing their place of stay for a trip as much on the hotel as the destination. And hotels are responding to this trend by paying attention to detail, selling their brand with specifics - for example, Philippe Starck taps. Guests now want an experience and not just a place to lay a weary head and interior designers and architects are pushing the envelope on hotel design with bolder, more daring, creative and sophisticated schemes being unveiled regularly.

With this in mind Hilton International, when redesigning five of its landmark hotels, created podcasts for its guests to provide them more details on the architectural heritage and design brief. The audio podcasts tell the hidden story behind the hotels to encourage guests to see the buildings as more than a place to lay their heads.

Hotels selected for the podcast project have been hand-picked by Hilton's in-house architecture and design team. The collection includes iconic restoration projects in Paris and Hamburg, a refurbishment inspired by a little known corner of Dublin, a London conversion on the city's artistic South Bank and a first of its kind, design focused concept in Reykjavik.

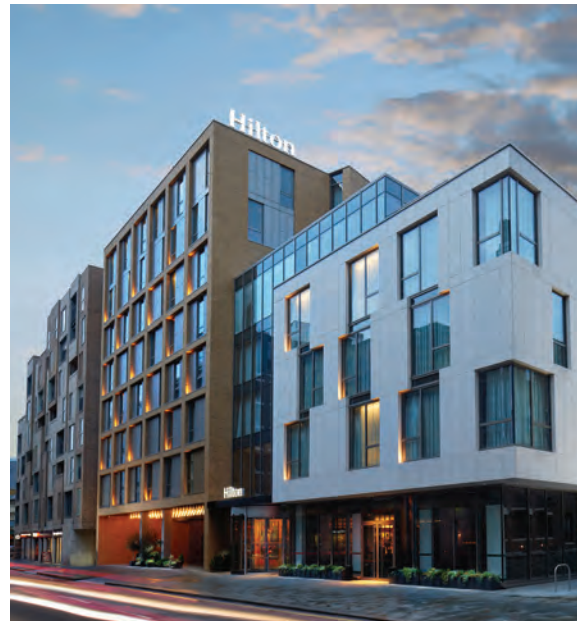
Over the past five years, Hilton has significantly expanded its dedicated team of experts focused



on the architecture and design of each property. The team works collaboratively across the entirety of Hilton's portfolio covering a diverse array of locations, brands and projects. The team's philosophy is centred on creating a sense of place that reflects the destination – not just the city or country, but the hotel's district, neighbourhood or even street.

The hotel group works with local designers and consultants, to showcase the very best of each location. This can range from commissioned artwork to mark an important moment in time, the inclusion of furniture and soft furnishings from celebrated local workshops or the preservation of historical artefacts.

Canopy by Hilton in Reykjavik is inspired by the street art and music the district is known for



Gordon Coles, senior vice president, architecture, design and construction, EMEA, Hilton, says: "Whilst our hotel guests are excited to explore a city's architecture or its design hotspots during their visit, the hotel itself can be overlooked – it is sometimes seen as just a place to lay your head or enjoy a nice meal after a long day of sightseeing or business

meetings. We want to challenge this and inspire them to take a closer look at their hotel after learning a little bit more about its history and hearing one or two secrets."

Chris Webb, senior director, interior design, EMEA, Hilton, says: "Every project is unique, so we approach each hotel with a blank canvas. Creating a sense of place is our >>>

// Audio podcasts tell the hidden story behind the hotels... to provide guests with more details on the architectural heritage and design brief"

// There is a risk this could become pastiche so we identify quirky flourishes”

»»core aim – it enhances our guest experience by making their stay more authentic, but it also makes people feel more at home. There is a risk that this could become pastiche, so we spend a lot of time getting under the skin of each location to identify lesser known or quirky flourishes that are still true to the building itself.”

The five hotels profiled in the new audio guides are Canopy by Hilton Reykjavik City Centre (Iceland); Hilton London Bankside (United Kingdom); Conrad Dublin (Ireland); Hilton Paris Opera (France); and Reichshof Hamburg, Curio Collection by Hilton (Germany).

Canopy by Hilton in Reykjavik City Centre is a new build hotel that is located in a district renowned for its street art. Sigurður Ámundasonhe, whose work adorned a house formerly situated on the hotel's site, was invited to create new pieces for Canopy. Other street artists have contributed work as part of a collaboration with the Reykjavik Arts Festival. Music has also had a strong influence on the hotel

with over 1,000 records available for guests to play in the hotel's Canopy Central Café, and a Reykjavik Music Box in rooms to lull guests to sleep with an Icelandic lullaby.

Hilton London Bankside reflects the South Bank's industrial heritage and the neighbouring Tate Modern. The concrete effect tile flooring in the lobby evokes the famous Turbine Hall and the striking bespoke lighting is by Alexander Calder, an American sculptor and draughtsman who exhibited at the Tate from November 2015 to April 2016. The Penny Wall in the hotel's Distillery Bar is potentially inconspicuous, but references the building's previous life as a Bank of England warehouse and features a tribute to the Women's Suffrage Movement.

Conrad Dublin took inspiration for its £13m refurbishment from the beautiful Iveagh Gardens opposite – one of the finest and least known of Dublin's parks and gardens designed by famed landscape gardener Ninian Niven. In the lobby, the combination of the bespoke rug based on the garden's labyrinth, the floral colour palette and a handcrafted chandelier overhead evokes the feeling of walking through the rose garden and its meandering pathways with the sunlight glittering overhead. »»

Below: Baccarat chandeliers in Hilton Paris Opera



ATTENTION TO DETAIL

This year's entries to the hospitality sector of the GAI/RIBA Specification Awards reflect the level of design detail hotels are demanding





BERKELEY HOTEL

John Heah architects, working with izé on the Berkeley Hotel in Knightsbridge in London – one of London's finest hotels – had to provide bespoke hardware for doors and butlers cupboards. The finished design was rough cast bronze with special threaded escutcheon rose covers to mask swiss profile emergency access cylinders.

ARTS CLUB

Sagrada architectural practice asked Harbrine to specify ironmongery for the esteemed Arts Club in London. The Arts Club Hotel project involved the transformation of three floors previously used as office space above the famous private members' club founded by Charles Dickens. The challenge was creating a glamorous



The entries for the hospitality category for the 2017 Specification Awards reflect the design conscious nature of the hotel sector

boutique hotel that was an extension of the style of the Arts Club itself. The ironmongery therefore had to live up to the very highest of standards; honouring history whilst meeting modern expectations. Working closely with the contractor and the interior designer, Harbrine ensured that the ironmongery reflected the age and beauty of the building, as well as being functionally robust. Harbrine not only specified the highest quality hardware, but sourced a specific finish and matched it across products. They saw the project to its conclusion, managing the supply process through to handover.

Harbrine worked closely with manufacturer Frank Allart in adapting its products to suit the very specific needs of the project. The interior designer provided the style guidelines

and required dimensions, which were non-standard sizes. Harbrine had Frank Allart customise a number of their handles. The finish was a bespoke bronze. Not only did this have to meet the exacting needs of the project, but it had to be co-ordinated across products, to be in tune with the room and with each piece of hardware.

WOMBAT'S

Providing a little bit of design flair for Wombat's City Hostel was the task for Hafele UK Ltd from Andrew Mulroy Architects. Housed in a restored former seaman's hostel, this trendy hostel is a step up from the norm, whilst retaining some existing features. Robust, contemporary SSS ironmongery and access control was used throughout, including locker locks to provide a secure place for storage.

// Reichshof Hamburg underwent a £30m renovation to restore the art deco gem

»» Hilton Paris Opera opened in January 2015 after a £46m refurbishment and is the epitome of an upscale Parisian hotel. It was originally built in 1889, the same year as the Eiffel Tower, for the Exposition Universelle to provide opulent accommodation for wealthy visitors before becoming a safe hold for the resistance during the Second World War. It now features soft furnishings inspired by Christian Lacroix and Baccarat chandeliers that compliment hand-painted frescos and Corinthian colonnades.

Reichshof Hamburg underwent a £30m renovation in 2015 to restore the art deco gem to its original glory. Designed by Heinrich Mandix in 1910, the building was inspired by the luxury transatlantic ocean liners of the time and later included a number of original features from the era of the 'Golden Twenties'. The hotel has been painstakingly restored to its former glory, but pride of place is a sepia-toned photograph on the wall above the bar to remind guests of the building's original lobby.

With travel on the rise and hotel guests becoming ever more discerning, hotel design is taking an increasingly central role in attracting business, providing the AI industry with opportunities in a creative sector. ■

Hilton London Bankside (below) reflects the South Bank's industrial heritage and neighbouring Tate Modern



ROOMS WITH A VIEW

Hotel designs pushing the boundaries



ICEHOTEL 365 PHOTOGRAPHER: ASAF KLIGER

ICE ICE BABY

Twenty themed suites, a frozen art gallery and an ice staircase feature in Icehotel's first permanent lodgings, in Sweden.

The Icehotel 365 is located on the banks of the Torne River in Jukkasjärvi, Sweden – next to the site where a seasonal Icehotel has been erected each winter since 1989. Unlike its temporary counterpart, which is built annually from ice and snow sourced from a nearby river, the year-round Icehotel has an undulating roof that is snow-covered in winter and grassy in summer. Its interiors have been imagined by over 40 artists, designers and architects. As well as the 20 suites, the hotel includes a champagne Icebar and a frozen art gallery.

FACING MECCA

Foster + Partners has won a competition for a complex of stepped towers in Mecca, Saudi Arabia, providing accommodation for pilgrims en route to the world's largest mosque. The mixed-use scheme will include luxury hotels and apartments. A ramp integrated with the topography of the site will take pilgrims beneath a series of large pillars, which branch outwards as they reach towards the ceiling.

Natural light will flood these pillar-filled spaces through patterned metalwork that is intended to heighten the experience of visiting the

Grand Mosque. The design follows a philosophy of 'luxury with humility'.

Hotel rooms will feature a dedicated space for private prayer and contemplation. Large openings will provide views to the Grand Mosque and Holy Kaaba – a building at the centre of the mosque, which Muslims are expected to pray towards.



DETLEF SCHOBERT

CANOPY COVER

Seven Scandinavian architects have now built treehouses for Sweden's Treehotel, including a bird's nest, a mirrored cube and the charred timber cabin added earlier this month by Snøhetta. The 7th Room by Snøhetta is also the site's tallest and largest to date. Completed at the end of 2016, it is anchored to the trunk of a pine tree and features a net terrace that allows guests to sleep under the stars.

Set up by Kent Lindvall and his wife Britta in 2010, the Treehotel offers themed lodgings for tourists venturing north of the Arctic Circle in search of the Northern Lights.



New bespoke cylinder lock range from HOPPE

HOPPE is launching the new patented ARRONE Specification Cylinder range.

The system has unlimited, lifetime trademark protection which prevents illegal duplication of keys. Other features include tamper proof technologies and a classroom function. We can also fulfil bespoke orders to a range of finishes to match your commercial, residential and industrial needs.

Call us for more information, or to arrange a visit from one of our sales representatives on 01902 484 400 or send us an email at info.uk@hoppe.com.



A LIFE OF AI

The GAI has conducted a 'Where Are They Now?' initiative to follow up on the career paths of past Diploma holders. In the first of a series, we catch up with **David Martin**

David Martin, DipGAI, age 73, has enjoyed a lifelong career in the AI industry, climbing the corporate ladder at Allgood and demonstrating his passionate belief in education by acting as education consultant for the GAI. His success was less a strategic plan and more a case of answering whenever opportunity knocked and following his heart.

But it was a talent for drawing that actually drew David into the AI industry – perhaps not the traditional route.

"Prior to leaving Art School we were given three interview appointments with three different companies," explains David. "I selected to go and work for a manufacturing company called J R Pearson who made balustrades, wrought ironwork, nameplates and nightsafes for Lloyds Bank. I was asked to go to Chubb Safes in Wolverhampton to see the mechanism for nightsafes being manufactured. As I was drawing the bronze surround for the safes it was imperative that my drawings were accurate for our works department to manufacture so that the two products

// I was drawing the bronze surround for safes and it was imperative my drawings were accurate. This is when I 'got the bug' "

fitted together on site. This is when I 'got the bug'. My eyes were opened to new products that I didn't even know existed so I left JR Pearson and went to work for a builders merchants with an ironmongery division, but it was when I joined Allgood that my career really started."

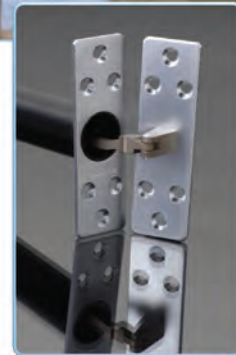
David joined Allgood in August 1966 age 21 as a contract co-ordinator. On the advice of the general manager Arthur Williams, David took his GAI Trade Examination – a four year course which eased him into a more sales-based role.

David recalls coming into Allgood Birmingham's reception area early one morning in August 1970 to hear the telex machine (an early email system) ticker taping out messages. As he was in early, he decided to collate and distribute them. >>>

3003 CONCEALED DOOR CLOSER



- ✓ CE marked
- ✓ BS EN1154 approved
- ✓ BS EN1634 approved
- ✓ FD30 fire doors
- ✓ FD60 fire doors
- ✓ CERTIFIRE – PREMDOR
- ✓ PAS 24 - SOUND SECURE DOOR



www.astradoorcontrols.com
info@astradoorcontrols.com

01772 796901

astra[®]
DOOR CONTROLS LIMITED

»» To his shock and ecstatic delight, he had come top in the UK in the GAI Examinations and had been awarded the prestigious Gold Medal. His friend and colleague Graham Shirville had received the Silver Medal.

Company man

In 1972, David and his wife Jenny moved to South Wales where David continued to support Allgood as the regional sales manager for the South West. His area covered Bristol to Cornwall and most of Wales. He became known as “Dai Modric” and was seen as an adopted Welshman.

His success continued when Allgood opened a Bristol office and David was asked to run it. Business for Allgood was going well and David’s success allowed Allgood to have a healthy business for many years during his time in the area.

In 1989 a bigger move came and David relocated back to the Midlands. After 23 years with Allgood a director’s role was calling and so David took his place on the board directing the sales team.

He introduced his son Paul Martin (the now new CEO of dline Eisenware pictured with David above) into the world of architectural ironmongery in 1992, where he immediately enrolled onto the GAI education course as David believed in the importance of the course. In October 1997, David as a proud father attended a ceremony at the Café Royal in London to see Paul receive his GAI diploma.

In 2003, after 37 years for Allgood, David retired. His wife Jenny asked him what he was now going to do and his reply was simple: “Nothing, let’s see what comes!” But he wasn’t idle for long as several major companies contacted him and he started a small business called Millbrook Associates.

He also had a phone call from Peter Spill the then GAI director who wanted to consult with David over how to improve the standard of GAI Training and examination documents.

David became the GAI Education Consultant and was instrumental in several developments of the GAI exam process. He worked on Levels

One, Two and Three taking on the organisation of training days and setting examination papers. He even flew over to Dubai to ‘fast track’ a number of students at Silver Shore Trading LLC who wanted to sit for levels one and two in one year. David was the first to fly overseas to train GAI students for all three levels.

“Having had the training from such wonderful individuals and characters in our industry, I wanted to join them and give something back and help the young men and women who have joined our industry,” says David. “I also saw the need for progression of exam papers and training methods, some of which as Education Consultant for the GAI, I was allowed to implement.

“Although my training days have ceased, I still regard the GAI and IAI in high esteem. The progress and innovation that is now being made with training from the GAI can not only be good for the individual but also for our industry worldwide.”

Successes David was instrumental in included:

- Updating all Examination Documents.
- Replacing line drawings with actual photographs on exam papers.
- Coloured Examination papers instead of black and white.
- Aunt Sally papers (Examiners Crib Sheet) to ensure “all markers” marked papers of each student fairly.
- New Level 3 Scheduling Drawings with more information for the student; it had to be like the drawings you receive from Architects or Contractors.
- Advising Level 3 students what the project was going to be before they walked into the exam room to mimic real life when architects advise the company representative what the project is before they visit.
- More assistance for overseas students.
- Introduction of coursework online.

Following your heart

David’s illustrious and rewarding career has left him full of words of wisdom. “When you choose your



“Having had training from such wonderful individuals and characters in our industry I wanted to join them and give something back and help the young men and women who have joined our industry”

career, you need to make sure it is one that will make you happy throughout your working life – and if it isn’t making you happy, it’s time to change your career or maybe company.

“If you are just starting to look at careers, or if you’ve reached a point in your career when it’s time for a change, you need to plan ahead. Don’t let events overtake you or be swept along with what others want you to do. It’s time to really analyse your motivations, your goals and what makes you happy. Once you know yourself, you can find the career that is perfect for you.

“When I joined Allgood, I knew that this was the company for me that would give me a career and training that I so wanted.”

David has now retired for a third time with three granddaughters to keep him out of trouble, but still says when asked what will you do now “Nothing, let’s see what comes!” ■



» Airkey - The phone is the key <

Enquire to become a certified Partner today:

T: 08444 125 101 (option 4)

E: access@aldridgesecurity.co.uk

Airkey is as dynamic as our customers' needs and allows you to grant access wherever you are in the world, within seconds.

www.evva.co.uk/airkey



Aldridge
Masters of Security Distribution

The specification created for a construction project details the exact requirements of the building as designed, as well as the products and materials that meet those needs. The process of translating a design for a building into reality is often complex and so generating a full and robust specification is a vital part of ensuring the long-term success of the project.

Changes to an approved specification can be made for a number of reasons and architectural ironmongers have an important role to play in protecting a specification - providing advice, as much detail as possible and highlighting potential issues that could occur should changes be made.

Paying the price

Cost is perhaps the main driver behind specification switches. Financial pressures can lead to elements of the building being altered from the original product specified in an effort to reduce initial costs. While this may alleviate short-term pressures it can consequently increase the long-term costs of maintaining the building as a whole.

This is because doors and door hardware are among the most heavily used elements of a building. For example, in high traffic areas such as corridors, door components will be subjected to thousands of open/close cycles a year and potentially millions throughout their lives. This

is especially true for public sector and commercial environments where taking a long-term approach to door component specification is vital. In fact, independent research has found that where doors and hardware represent less than 1% of the building's initial cost, they can account for up to 80% of maintenance costs.

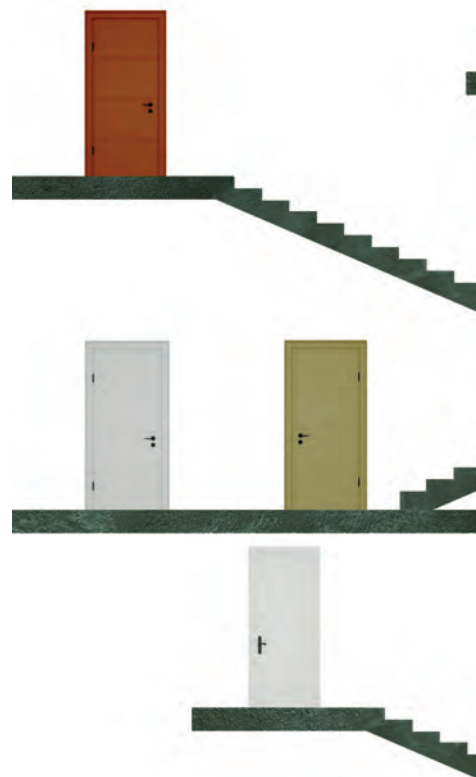
Architectural ironmongers will be well aware that the intended level and type of use should always be part of the considerations when specifying doors and components. Products with certain features may have been specified to meet the needs of an environment. Selecting the most suitable product is the first step, but ensuring it is then installed correctly has equal importance as this can reduce the wear over time, any potential damage and ultimately the costs of maintenance, repair and replacement.

For example, a door control product that includes a backcheck feature may have been selected to help protect the door, ironmongery and the surrounding area from the door being opened aggressively. This is particularly important for fire doors where damage can compromise its performance in the event of a fire. For example, the 'Thinking Backcheck' feature fitted to the majority of dormakaba door closers allows a door to be fully opened during normal operation with no increased resistance, but will cushion and arrest the door at 85° to 90° if opened aggressively.

Compliance science

The complexity of meeting all relevant legislation, including both fire and access regulations means that where a specification is not followed there is a risk that the installed doors will not perform as required. Approved Document B of the Building Regulations requires that door controls fitted to fire doors must close the door from any angle, overcoming the resistance created by other components fitted to the door such as latches, hinges and intumescent seals.

At the same time, doors must still be sufficiently easy to open to allow day-to-day access to the building for all occupants and evacuation in an emergency. The Equality Act 2010 requires that the physical features of a building must not restrict access to



BREAKING BAD

Specification switching is an issue in all areas of construction. **Graham Hulland** looks at how deviation from the original specification of door hardware can have a significant impact on costs, compliance and user experience.

people with disabilities. This means door closers must be specified that do not require an excessive force to open. As such Approved Document M states that "...a door set must produce an opening force of below 30N between 0° and 30° degrees and below 22.5N between 30° and 60° degrees."

The opening forces are stated in relation to the door 'set' and so where specified items of door hardware are substituted it may lead to non-compliance with the regulations and the need for costly remedial work to be carried out after the building is handed over.

Furthermore, when it comes to fire doors it is considered best practice

to ensure that only third party tested and certificated doors are specified. All hardware including closers, hinges, locks, seals, and panic hardware

// While alterations to the specification may seem beneficial in terms of budget, the impact on lifecycle costs can be significant

as well as any hold-open or free-swing devices fitted to third party tested fire doors must also carry the certification for the certification of the door to be maintained. For example, if subcontractors or installers deviate from the approved specification and fit non-CERTIFIRE approved hardware to a CERTIFIRE fire door, the certification of the door as a whole could be invalidated.

Beyond installation

A further factor to consider is longer-term compliance with the original specification. As such, if door hardware needs to be replaced as part of regular service and maintenance, it is important to ensure that the new part meets the requirements of the

original specification as well as all current legislation.

Finally, selecting high quality components will not only provide longevity but may also help ensure the doors continue to meet regulations even if standards are updated – avoiding the need to replace the product. For example, more than 20 years ago dormakaba supplied door closers to the Royal Devon & Exeter Hospital. The original products not only continue to function correctly on the original doors but also comply with all current Building Regulations and Product Standards. The components did not need to be updated despite numerous changes to legislation.

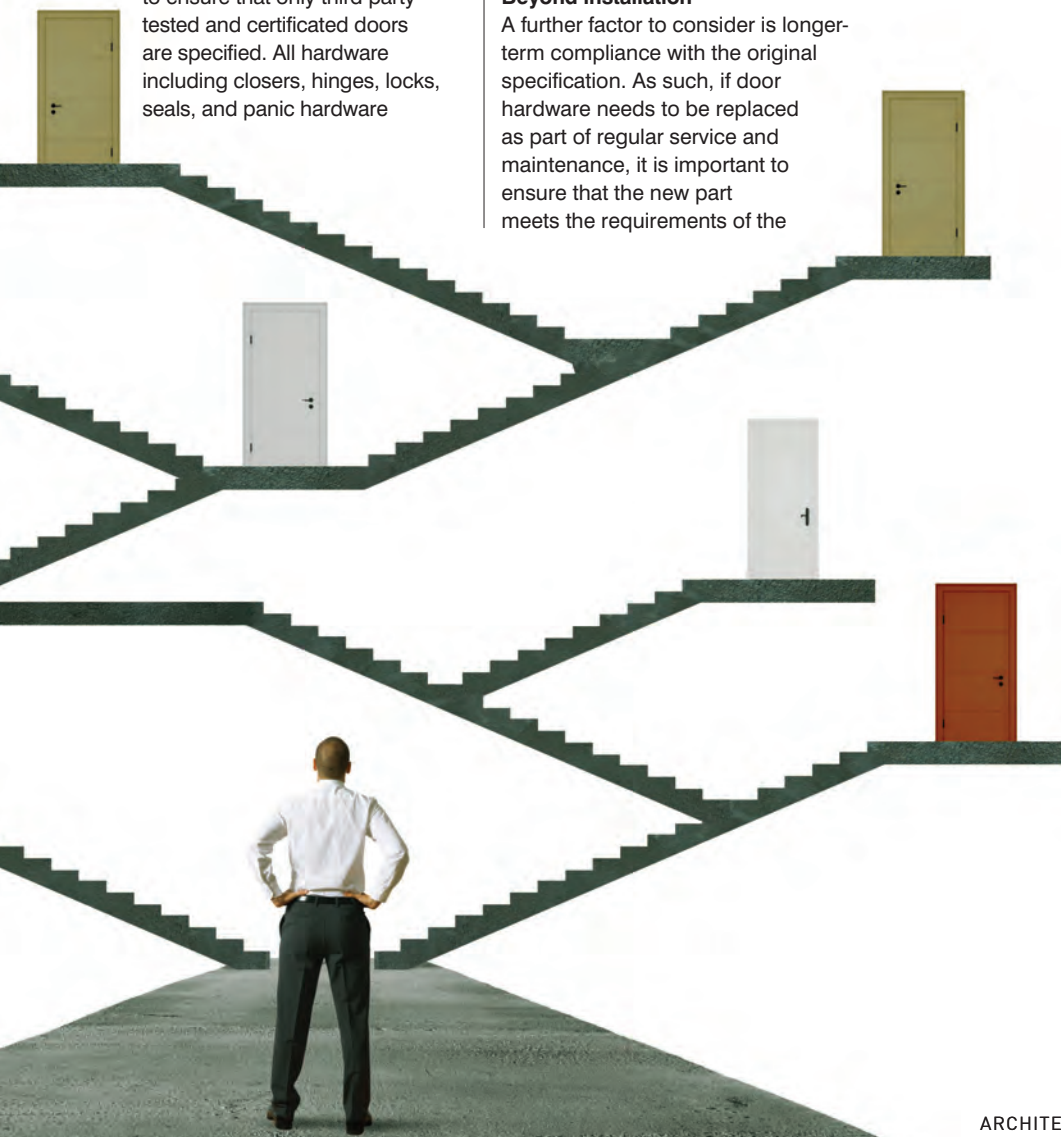
Maintaining a specification

There are several ways of helping to ensure that specifications are followed. Engaging with a trusted supplier early in the process will allow the correct solution to be identified and for detailed information to be included in the specification – making it more robust. This then allows product performance to be benchmarked for comparison. This is vital where a contract is awarded following a competitive tender process, as this will ensure that the selected organisation's proposal still meets the requirements of the design. Furthermore, this can be supported throughout the build by implementing scheduled inspections of the work in progress to help identify any issues early in the process.

While alterations to the door hardware specification may seem inconsequential or even beneficial in terms of budget, the unintentional impact on lifecycle costs and compliance with regulations can be significant.

Architectural ironmongers have a responsibility to ensure where recommendations are made to change or upgrade the approved specification that the end result still meets all relevant legislation and the needs of users and that the performance meets all original criteria. ■

Graham Hulland is product marketing manager at dormakaba.





Balustrade Innovations

Introducing Phoenix Balustrading, a new innovative range of high quality stainless steel modular balustrade and handrail components, supports and rails.



PHOENIX

PHOENIX BALUSTRADING

01922 740011
sales@phoenixbalustrading.co.uk
www.phoenixbalustrading.co.uk

SPECIALIST ARCHITECTURAL
 HARDWARE SUPPLIERS
 TO THE DOOR
 OPENINGS INDUSTRY

ZEROplus



AT ZERO WE CAN CATER FOR ALL YOUR DOOR HARDWARE REQUIREMENTS; IN FACT WE SUPPLY EVERYTHING EXCEPT THE DOOR! INCLUDING AMONGST OTHERS; ZERO DOOR SEALS, ANEMOSTAT VISION FRAMES, SLIMPORT PORT HOLES, FBLs FIRE RATED LOUVRES, FINPROTECT FINGER PROTECTION, FRICTION STAYS, FLUSH BOLTS AND MANY OTHER ITEMS OF DOOR HARDWARE. PLEASE CONTACT US FOR A COPY OF OUR 260 PAGE PRODUCT CATALOGUE.

Zero Seal Systems Ltd
 Units 43 - 45 Ladford Covert, Seighford, Stafford, ST18 9QG, United Kingdom
 Tel : +44 (0)1785 282910 E-mail : sales@zeroplus.co.uk

WWW.ZEROPPLUS.CO.UK



GAI RIBA Approved CPDs

The GAI have now created two CPDs which have been approved by the Royal Institute of British Architects. As they are RIBA approved this means that architects will be able to receive double learning points for attending a presentation of this CPD. These CPDs are now available to GAI membership to purchase at a cost of £250 plus VAT each.

Ironmongery and accessibility

This looks at the following areas: legislation, including the Disability Discrimination Act, Equality Act, BS 8300: 2009, and Approved Documents, and their equivalents throughout the UK and Ireland; the impact of BS 8300, specifically on products such as door closers, automatic door operators, door furniture and hardware such as hinges, locks and panic hardware. This also features access control products and handrails, and; visual contrast and light reflectance values.

Specification of door hardware – an architect's guide.

This is based on the publication of the same name which is available in hard copy or to download from the GAI website. This presentation is intended as a guide for architects on what architectural ironmongery is and how the process of correctly specifying these critical items comes together.

For further details please contact technical@gai.org.uk

FACE FACTS

Just how BIM fluent are you? And if asked to show your BIM information could you? One year on from the Government BIM mandate **Douglas Masterson** offers an update on the model that can't be ignored

As many of our readers will no doubt be aware 4 April 2016 was the official date on which the UK Government's Building Information Modelling (BIM) mandate came in to effect. This was the date that all centrally procured public sector projects would require the mandatory implementation of BIM Level 2.

We are nearly one year on now from this date – so what has changed? BIM is now compulsory, information is still key but a new series of acronyms and terminology has crept up on us since then. Terms like 'Relevant Authorities' and 'LEXiCON' have come to the fore and this article will revisit some of the more established terms as well as explaining some of these newer ones. It will also look at how the ironmongery and allied industries are adapting to BIM, and provide advice on BIM from the GAI.

Level 3 is the next step and represents full collaboration between all disciplines using a single model."

What is BIM?

BIM is the process of creating a rich digital computer model of a building project that can be used to design, fully analyse, build, manage, maintain, refurbish and even demolish that building. BIM refers to the creation and use of co-ordinated, internally consistent, computable information about a building project for design, construction and use. As a model its purpose is to co-ordinate data and drawing between disciplines in a 3D environment, and seek to bring order from information chaos. BIM is effectively the digitisation of construction as it takes many separate systems to one defined location and allows the data to be structured in such a way that it can be easily searched.

What is Level 2 BIM?

Level 2 BIM is a system of collaborative working with all parties using their own 3D CAD models, but not necessarily working on a single, shared model. The collaboration comes in the form of how the information is exchanged between different parties and this is the crucial aspect of this level. This is the level set for mandatory implementation on UK Government projects.

What about Level 3 BIM?

Level 3 BIM is the next step and it represents full collaboration between all disciplines by means of using a single, shared model held in a centralised repository. All parties can access and modify that same model, and

the benefit is that it removes the final layer of risk for conflicting information. This is known as 'Open BIM'. The UK government reasserted its commitment to Level 3 BIM as part of the Budget announced in March 2016 and further details of the UK Government Digital Built Britain programme were revealed last October. At present Level 3 is seen as a visionary strategy which may take between five to 10 years before full implementation takes place.

How do I communicate my own product information in BIM?

There are several ways in which your information can be communicated.

One is through the use of BIM objects, which include 3D modelling, and another is through Product Data Sheets (PDSs) which are derived from Product Data Templates (PDTs)

- **BIM objects.** BIM models are created from a series of objects. If the object is changed, these changes will appear throughout the model. This makes models automatically consistent and reduces errors. BIM objects can be created through the likes of NBS national BIM library or BIMstore. These can be downloaded directly in to the BIM software system.

- **Product Data Templates (PDTs).** These are a key document in BIM and are templates which help generate information about a manufacturer's product. From this template a product data sheet (PDS) is produced which can be made available by the manufacturer to anyone who requires it. >>>

// We will continue to educate by setting up a one-day course on BIM later in 2017"

»»» What is the GAI doing about BIM?

The GAI, working closely with BIM4M2, established a working party in September 2015 to create PDTs for the ironmongery industry. This committed group has met a number of times and has drafted a considerable number of PDTs on many of the main ironmongery product groups including hanging devices, door controls, locks, and panic hardware.

The GAI has also applied to be a 'Relevant Authority' with BIM4M2 in ironmongery, door automation and access control.

The GAI is also actively working with a number of other allied trade associations to provide a joined-up approach for the creation of PDTs for the door, window and hardware industries.

The GAI Guide to BIM Technical Briefing is available to download from the member's section of the GAI website.

We will continue to educate the industry by setting up a one day information course on BIM later in 2017. Further details will be provided on this in due course.

What about other industry bodies?

One example of a trade association that has also embraced BIM is the Automatic Door Suppliers Association. ADSA has also put together a working party for the development of PDTs. Their team has produced the first three most important templates

for the automatics industry, those being automatic door operators for sliding, swinging and revolving doors. Anthony Helps of ADSA states "We are right at the start of the BIM journey and it's one that I am pleased to be on. I am really keen to see the latest online PDT creator called LEXiCON, I believe this will be a significant step forward in achieving standardised field/parameter nomenclature." The GAI will be looking to work closely with ADSA on BIM going forward due to the obvious synergies between the two organisations.

What is a Relevant Authority (RA)?

A Relevant Authority is an organisation or individual identified and approved by the CPA / BIM4M2 as having the knowledge and responsibility to identify and/or approve unique parameters and information sets in their own industry. One practical example of this is that an RA will approve terminology used in Product Data Templates to ensure all industry is using one common vocabulary.

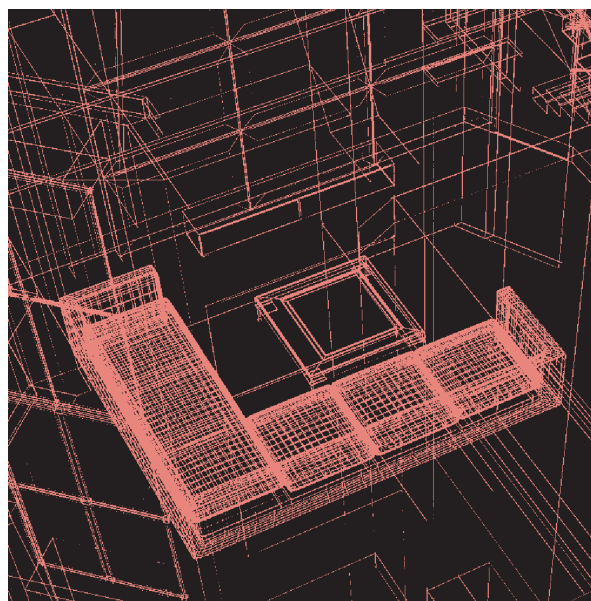
What is LEXiCON?

LEXiCON is a new online process for defining and publishing the information from PDTs using a single source of terms which will allow many organisations to work together and communicate more effectively. Using LEXiCON will allow PDTs to feed directly and seamlessly in to the BIM delivery process. Relevant Authorities will use LEXiCON extensively.

What are the relevant BS and PAS standards for BIM?

The following list of standards has been developed to assist the construction industry to adopt BIM Level 2. These documents are all free to download due to government and industry sponsorship.

BS 1192:2007 + A2:2016
PAS 1192-2:2013
PAS 1192-3:2014
BS 1192-4:2014
PAS 1192-4:2014
PAS 1192-5:2015

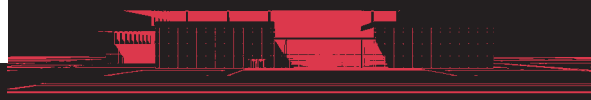


What is the GAI's advice on BIM?

BIM is happening and it's happening now. As stated earlier, BIM Level 2 is now mandatory on centrally procured public sector projects. Whilst the provision of expensive 3D objects is not essential it is likely that at some stage a key stakeholder in the construction process will ask a manufacturer or an architectural ironmonger for their BIM information. They should be prepared for this by looking at how their product data is presented and how well it is structured. PDTs are still being finalised for the construction industry so it may well be that a manufacturer's existing data sheets will suffice in the interim.

Finally, don't ignore BIM or assume it will go away! BIM is here to stay and it will be a major contributory factor in the provision and usage of information in the construction industry going forward. ■

For further information on BIM contact Douglas Masterson, GAI Technical Manager.





Security Tech Germany

The Complete Security Solution

Domestic, Commercial, Industrial and Mobile



RAVEN RP62 FINGER GUARDS

CONSORT
Architectural Hardware

Raven Products, the leading manufacturer of premium finger guards, has been supplying the RP62 for over 30 years. Its proven and tested finger guards are being used in schools, kindergartens, residences and commercial facilities in the UK and around the world.

Raven EPDM and PVC RP62 finger guards are constantly tested and evaluated to one million cycles without tearing, tested to ASTM D412 for tensile strength and ASTM D575 for compression with excellent results. Raven proprietary EPDM and PVC, TPV rubbers, including those used on the RP62 are designed to withstand the rigours of compression, heat, cold, water, ozone, abrasion, ageing and have added UV inhibitors for UV protection.

When considering safety, why not choose a proven and tested product. RP62

- Can be used on hinged and pivot timber or steel doors
- Opening angle up to 180° (user determined)
- Lengths 2100mm and 2500mm
- 260mm wide version available (for EPDM version)
- RP62 EPDM black rubber
- RP62 PVC reversible flexible brown/white rubber. Brown, white and grey flexible cover strips included.
- Satin clear (silver) anodised aluminum (15µm) carrier

For prices, product assistance and stock availability, please contact Consort at Unit 22, Boulton Industrial Centre, Icknield St, Hockley, Birmingham B18 5AU

T: 0121 523 7277 E: raven@consort-hw.com

NEW PRODUCTS »

LAIDLAW PRESSES FORWARD WITH BIOMETRIC READER

Laidlaw Security Systems has announced that it is to fully integrate Invixium biometric readers into its portfolio of products.

Laidlaw will now integrate the readers with Orbis, its licence-free access software.

Invixium technology combines sophisticated matching algorithms at 10,000 matches per second along with multi-spectral fingerprint sensor technology supplied by Lumidigm.

The sensors detect the subsurface fingerprint, which increases biometric performance and enhances the throughput and accuracy of any application, even

for the 2-5% of the population who have 'problem fingerprints' that fail to enrol on conventional sensors.

In addition to being the first biometric product developed on the Android platform, Invixium products are equipped with industry-leading trusted technologies. These include capacitive touchscreen LCD with antimicrobial Corning Gorilla Glass, presence detection, IP65 rating, power over Ethernet (PoE), and HID's iCLASS SE card reader.

» For more information visit www.laidlaw.co.uk



NEW CE3F DOOR CLOSER HITS THE MARKET

The new CE3F Door Closer is now available from UNION.

The CE3F is the only fixed size three rack and pinion door closer in its class that is CE Marked and fire rated for metal and fire doors in all three mounting positions: regular, transom and parallel. It is also Certifire approved and supported by a 10-year guarantee.

The CE3F is supplied with everything needed to complete an installation in all three configurations.



Easily retro-fitted to existing doors, the CE3F's adjustable arm offers a flexible solution that can be used for a range of different applications. The system is offered with adjustable closing speed and latch action for complete control.

» For more information call 0845 223 2124.

TOUGH CLOSERS MAKE DOOR SPECS SIMPLER



are well suited to new build and refurbishment projects, particularly apartment entrance doors.

The suite of concealed door closers comprises 2001 (EN Power Size 1) and 2002 (EN Power Size 2) fixed power closers which cannot be vandalised, tampered with or damaged by physical

The new 2000 Series of closers from Astra are non-adjustable, fixed power closers which

override, making them ideal for public doors which need to withstand high traffic and/or the threat of vandalism.

The Astra 2001 closer is particularly suited to the narrow doors which are common on social housing refurbishment projects, helping the doors to meet the requirements within building regulations under Approved Document B in respect of fire safety and Approved Document M in respect of accessibility.

The new closers are compact and easy to fit offering a maintenance-free, 'fit and forget' option.

» For details see www.astradoorcontrols.com

GEZE WINDOW DRIVES GET SMART

GEZE's new IQ box KNX – an interface for IQ window drives can 'talk' to technology solutions around a building linked into a KNX building system.

A central panel displays the status of automatic windows which can be controlled and monitored within a central location. They can also communicate with other KNX components, such as push buttons and sensors, so that all windows in a building can be closed at the same time.

Should a weather station report rain or high wind speeds, the IQ box KNX will send a signal to the window drives to close them. The interface can also reverse this action if the concentration of CO2, humidity or ambient temperature becomes too high within the building.

The IQ box KNX reports the status of a window to the KNX building system or building management system, can give the precise opening width (as a percentage), and report faults and updates. A small display to visualise your complete KNX installation is now available. In addition, the Corlo Touch with its WiFi interface offers the possibility to take over control via a tablet or smartphone. The display offers nearly 250 icons to visualise the elements from the KNX system.

There is also a switch relay RDW module available which makes



it possible to control 24V window drives with 230V voltage and reduces the amount of wiring needed, making installation easier.

This is the latest smart building management product from GEZE. The firm also offers the IO 420 which connects into the BACnet system – the standardised global data communication system which is independent of manufacturers and specific technologies – to manage light, heating, ventilation and alarm systems.

It provides a standardised integration which works with GEZE window drives, automatic door systems, heat and smoke ventilation products, and safety technology products to provide heat and smoke ventilation, secure escape routes and provide a more pleasant and healthier indoor climate.

» For details contact info.uk@geze.com



ALLEGION EXTENDS BRITON DOOR CLOSER OFFER

Allegion has released the newest overhead door closer in the Briton range, the Briton 131.

Developed to serve busy buildings with medium to high footfall like education facilities, hospitals, commercial buildings, hotels and transportation areas, the Briton 131 retains the brand's hallmark association of high engineering and quality.

The surface mounted template adjustable closer is fully CE certified in accordance with the European Standard EN 1154, is Certifire approved and tested to EN 1634. To achieve the certification, the closer has passed testing on 500,000 cycles, proving that it is a flexible, durable and robust solution.

Adjustable for varying door weights from sizes 2-4, the Briton 131 is designed to be an economical solution to building owners and facilities managers with its low energy consumption.

» For more information visit www.allegion.com/uk/aboutus/ourbrands/briton.html.

HOPPE UK GUARANTEES LIFETIME PROTECTION OF KEYS

A new high-end, fully-patented, cylinder lock range with a lifetime trademark has been launched by HOPPE (UK) for a wide range of commercial, residential and industrial needs.

The AR3000 range boasts a unique 14mm core which allows for more pin variations and an extremely high number of combination possibilities for larger, more complex master key systems at no extra cost.

The system is patented until 2034 and has unlimited, lifetime trademark protection which prevents

unlawful duplication of keys. It also features tamper-proof technologies and a classroom function.

Cylinders can be made to any length – even to the longest lengths required in buildings with thicker doors for acoustic properties, such as music schools and theatres – and come in a wide assortment of double and single cylinder types and padlocks. Special finishes can be provided, including bronze.

The company's new catalogue is also out now featuring nearly 1700 product lines as well as offering buying advice, test data,

technical details and information on relevant standards.

» For a free copy of the catalogue or more details on the ARRONE range call 01902 484400



UNION KEYULTRA HAS EVOLVED



UNION has enhanced the quality and finish of its keyULTRA™ master key system.

Customers can choose from six finishes, including brushed satin nickel, polished chrome, satin chrome, polish brass, satin brass or antique polished brass.

Following customer research amongst UNION's architectural ironmonger customers, a new architectural thumb turn design has also been developed to enhance the keyULTRA™ range.

The product – patented till 2028 – also has enhanced features including the highest key related security, as per BS EN 1303: 2005, along with resistance to bumping, drilling, picking and plug extraction. keyULTRA™ is also approved for use on 60-minute fire doors in accordance with BS EN 1634-1:2000.

» For more information visit www.uniononline.co.uk/keyULTRA

ABUS SHUTS THE DOOR ON NOISY CLOSERS

ABUS UK's new door closers have been designed to ensure doors shut quietly and securely. ABUS Door Closers eliminate the frustration of doors that bang, and doors that don't shut properly allowing draughts.

Fire doors must be self-closing to comply with legislation and ABUS Door Closers can provide this for both residential and commercial properties.

The top-fitting door closers are easy to install and are suitable

for almost any door size and design.

ABUS provides a range of models for entrance doors, front doors, internal doors and fire doors including the following:

The AC4223 is suitable for room doors up to 65 kg and a maximum width of 950mm. The AC4223 can be used DIN left hand and DIN right hand, has adjustable closing speeds and is EN class 2-3.

The AC7023 is suitable for office doors, front doors to flats and

entrance doors up to 85kg and a maximum door width of 1100mm. The AC7023 can be used DIN left hand and DIN right hand, has adjustable closing speeds and is EN class 2,3,4 (<105°).

The AC7124 is suitable for office and entrance doors and for public buildings between 45 and 85kg and a maximum door width of 1250mm.

The AC7124 can be used DIN left hand and DIN right hand, has adjustable closing speeds,

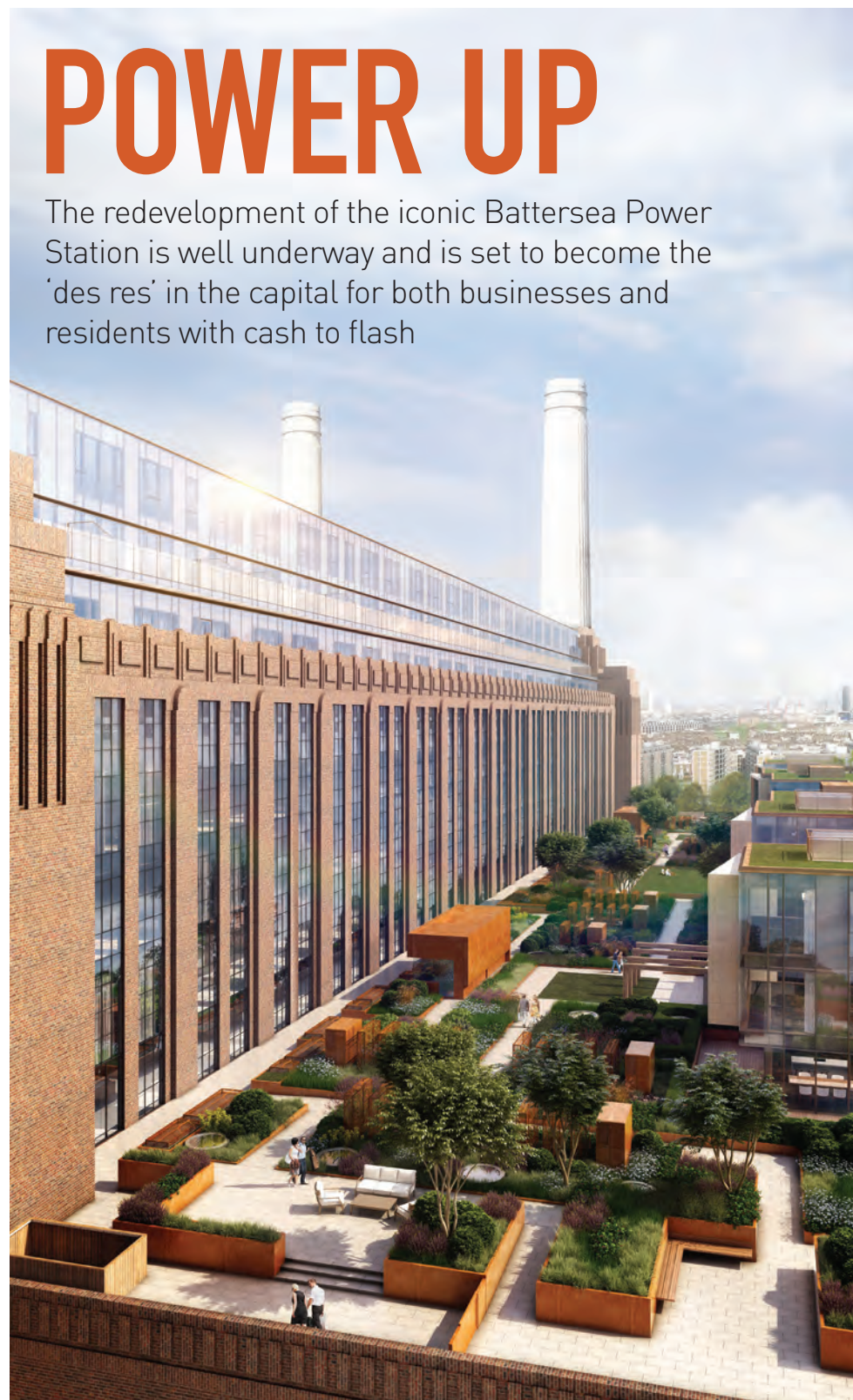
adjustable closing force, opening damping and EN class 2-4.

The AC7303 is suitable for office doors, front doors to flats and fire protection doors, maximum door weight of 60kg and maximum door width of 950mm. The AC7303 can be used DIN left hand and DIN right hand, has adjustable closing speeds, locking function and is EN class 3.

» Visit www.abus.com or email sales@abus-uk.com

POWER UP

The redevelopment of the iconic Battersea Power Station is well underway and is set to become the 'des res' in the capital for both businesses and residents with cash to flash



Apple is the latest company to announce it will take up residence in the £9bn redevelopment of Battersea Power Station in London. Around 1,400 staff from eight sites around the capital will move to "a new Apple campus" at the Grade II* listed former electricity generator, where they will enjoy a rooftop garden as part of the 471,000 square feet of office space.

Phase I – dubbed Circus West – is well underway and involves conversion to a mixed-use development comprising 866 modern residential units, including roof top penthouses with private rooftop terraces. Residents will also have access to a private Residents' Club featuring a bar, private dining space, library, business centre and cinema.

Phase II of the project involves the £600m restoration and conversion of the actual power station, considered the largest brick building in Europe, including the dismantling and rebuilding of the four chimneys. Around 250 apartments are set to be created within and above the original building, together with offices, shops and restaurants, leisure and recreation facilities, an auditorium and rooftop gardens.

Phase III will see the construction of 1,300 homes, a medical centre, a 160-bedroom hotel and 350,000 square feet of leisure space constructed either side of a new pedestrianised high street named 'Electric Boulevard', which will act as the main gateway.

The north west chimney of the building will feature a glass viewing lift taking visitors over 100m into the sky for breathtaking views across London while riverside walks will open up the whole complex to visitors.

The entire project is expected to be complete by 2020. ■



» *Airkey - The phone is the key* «

Enquire to become a certified Partner today:
T: 08444 125 101 (option 4)
E: access@aldridgesecurity.co.uk

Airkey is as dynamic as your customers' needs and allows you to grant access wherever you are in the world, within seconds. **www.evva.co.uk/airkey**



Smart access means Dorma and Kaba joining forces



Dorma and Kaba are merging. Two companies with strong traditions, over 150 years experience and outstanding reliability. Our merger brings together what belongs together. A union that allows us to offer even better access solutions from a single source. Because your trust in us is our most valuable asset.

- Access Solutions
- Automatic Doors
- Door Closers and Furniture
- Emergency Exit Hardware

dormakaba
01462 477 600
info@dorma-uk.co.uk
www.dormakaba.co.uk

dormakaba 