

inside

NEWS

GAI Grenfell
inquiry response

FEATURE

Education
Awards

CPD

School safety



QUARTER MASTER

HERITAGE AND STYLE
AT TITANIC HOTEL



New access control catalogue from HOPPE (UK)

HOPPE (UK) has launched its latest access control catalogue featuring over 80 products ranging from activation and exit devices to electric releases and magnetic locks.

This catalogue provides technical drawings and information on relevant standards, making it easy for anyone buying or specifying hardware to pick the best access control products for their project.

Order your free copy of our access control catalogue by calling us on 01902 484 400 or e-mailing us at info.uk@hoppe.com.



CONTENTS

Winter 2017

NEWS AND VIEWS

News	04
GAI and IAI news	10

FEATURES

Where are they now? Adam Taylor	14
Belfast Titanic Hotel	16
GAI Education Awards	21
CPD: Access solutions for education	26

TECHNICAL

New Product Data Templates	30
----------------------------	----

NEW PRODUCTS

New launches this quarter	32
---------------------------	----

BACK DOOR

A new design district for London	34
----------------------------------	----

EDITORIAL PANEL:

David Stacey

President

Email: david.stacey@dormakaba.com

Angie Corkhill

Director

Email: angie.corkhill@gai.org.uk

Liz Male MBE

Director Liz Male Consulting

Tel: 01234 712279 Email: liz@lizmale.co.uk

TECHNICAL MANAGER:

Douglas Masterson

Tel: 07469 141657

Email: douglas.masterson@gai.co.uk

DESIGN AND PRODUCTION:

Atom Publishing

Tel: 020 7490 5595

www.atompublishing.co.uk

EDITOR:

Nicky Roger

Tel: 07704 336835

Email: nicky@atompublishing.co.uk

ADVERTISING MANAGER

David Smith

020 7490 5595

dave@atompublishing.co.uk

ART EDITOR:

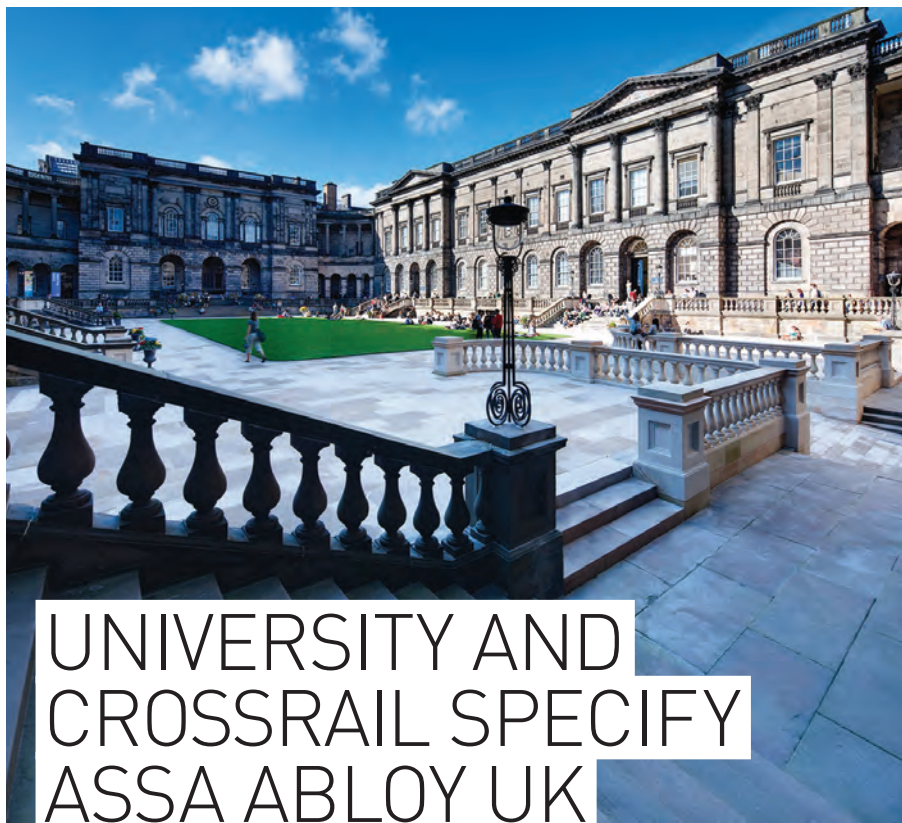
Heather Rugeley



aij is published by The Guild of Architectural Ironmongers.
BPF House, 6 Bath Place, Rivington Street, London EC2A 3JE.
Telephone 020 7033 2480. Website: www.gai.org.uk

Although this magazine is the official publication of the Guild of Architectural Ironmongers, claims and opinions expressed by contributors and advertisers do not necessarily reflect the official view of the GAI. Copyright The Guild of Architectural Ironmongers 2007 ISSN 0959-986x

COVER IMAGE: GARETH OCATHAIN



UNIVERSITY AND CROSSRAIL SPECIFY ASSA ABLOY UK



The University of Edinburgh (top) and the Crossrail station at Woolwich



ASSA ABLOY has been specified in two high profile public projects: the University of Edinburgh and Crossrail at Woolwich.

With a student population of over 35,000, the University sought a reliable door closer solution to help keep its students, staff and contract workers safe and secure.

The university has specified door closer products across its site. ASSA ABLOY Security Solutions supplied more than 300 DC500A CAM-Motion® door closers and over 60 G460 slide rails installed in both new buildings and retrofitted throughout the university's public, commercial and residential sites.

For the Crossrail project at Woolwich Station ASSA ABLOY Security Doors supplied fire, security and personnel steel doorsets. Main contractor Balfour Beatty specified approximately 200 doorsets, which included fire doors, specialist security doors meeting LPS 1175 security standards and other high-performance doors that were tailored to the specific requirements of the new station site.

The Woolwich contract is the latest in a series for ASSA ABLOY Security Doors on the Crossrail project, which includes Paddington, Bond Street, Tottenham Court Road and Farringdon station sites. The organisation has also supplied security doors to a range of other sites related to Crossrail, including the Victoria Dock Portal and Custom House and Mile End stations.

GEZE PRESENTED SMART WINDOW TECH AT CONSTRUCTION WEEK

The revolution in indoor climate control and security spearheaded by smart technologies was the subject of a UK Construction Week seminar given by GEZE UK's head of window technology.

Spencer Allen joined architect and television presenter George Clarke and representatives of the BRE, Carbon Trust and *The Sunday Times*, during the showcase event, staged at the NEC Birmingham in October.

He explored the concept of smart natural air ventilation, how it works, outlined its benefits and examined the findings of recent studies on its effects on workplace productivity and reducing 'sick building syndrome'.

The session, looked at how smart solutions are used in life-saving buildings such as hospitals and how they can be used to save lives in the event of fire by allowing safe and smoke free escape.

DORMAKABA DELIGHTS FROM NURSERY TO UNIVERSITY



dormakaba's ITS96 and ITS96 EMF door closers have been specified by architectural ironmongers G Johns & Sons for the newly built CBeebies Land Hotel at the Alton Towers resort in Staffordshire. It was crucial that the products could provide a discreet solution, that would not spoil intricate vinyl leaf designs on the bedroom doors, whilst also ensuring compliance with both access and fire regulations.

Designed by The Manser Practice and located within the Alton Towers resort, it is the first hotel designed exclusively for children and young families. Having opened in July 2017, the hotel allows its visitors to immerse themselves within a selection of children's TV shows, with each room featuring its own individual kids' zone.

Having worked previously with dormakaba, G Johns & Sons specified ITS96 door closers for all 76 of the bedroom doors. The architect initially stipulated that overhead door closers were to be installed. However,

it was decided that due to the nature of the fully screen-printed doors, complete with images of CBeebies characters, that it would be important to select more discreet door closers to ensure the design was not obstructed.

dormakaba has also supplied the University of the West of England with high security mechanical locking systems for its new Faculty of Business and Law building. The specification of the Kaba 20 and Kaba Quattro plus ranges for the new £55 million state-of-the-art project, continues a relationship that spans over 40 years.

The Kaba 20 and Quattro plus Master Key systems used allow selected keys to open a number of pre-defined doors and are compatible with a variety of locks. The Faculty of Business and Law Building has had over 500 new dormakaba cylinders installed in Kaba 20 and Kaba Quattro plus ranges.

Read more on security in education settings on p26.



ALLEGION BRINGS SMART TECH PRODUCTS UNDER SCHLAGE BRAND

Two of Allegion's smart technology brands will join the Schlage label to offer a unified access control portfolio.

Allegion has merged its two leading access control product brands under the Schlage brand in order to offer unified solutions to their customers for products using proximity, smart and biometrics technologies.

The two brands, aptiQ and XceedID, will have their logo and branding on the products changed to Schlage. The Schlage range is available for homes, multi-family properties, commercial and institutional buildings.

aptiQ's product range is predominantly in smart technology solutions, specialising in multi-technology readers and credentials solutions. The readers are able to recognise a wide range of magnetic stripe, proximity cards, smart cards and mobile credentials.

XceedID offers easy and convenient access control solutions. The cost effective readers and credentials products can be integrated into existing legacy systems and are sleek and architecturally styled.

SPECIFIERS HEAD TO ARCHITECTURE TRADE SHOW



ARCHITECT@WORK, the carefully curated two-day trade show aimed at architects, interior designers and specifiers, will return to Olympia, London on 24th and 25th January.

Over 100 leading international architectural suppliers will showcase new products and latest innovations. All exhibitors go through a rigorous selection process, with an external judging panel overseeing the product selection, to ensure it is one of the UK's most highly respected tradeshow of its kind.

The theme for this year's show is light and will include photography exhibitions, a series of filmed interviews with architects, designers and engineers, a book shop and a programme of talks.

Twitter: @ATW_INTL #ATWUK
www.architect-at-work.co.uk



TYNESIDE LIBRARY WINS TOP ARCHITECTURAL TECHNOLOGY AWARD

The Word, National Centre for the Written Word designed by FaulknerBrowns Architects has claimed the top prize at the The Chartered Institute of Architectural Technologists (CIAT) annual Architectural Technology Awards.

The Word was announced as the winner of the Award for Excellence in Architectural Technology. It was a challenging project that inspired a building for the present, with in-built adaptability to future proof its

functions. The design concept and architecture have been informed by architectural technology.

To view all the category winners as well as highly commended and commended projects head to <https://ciat.org.uk/awards.html>. Films can also be found at youtube.com/ciatechnologist.

The awards reopen in the New Year, including the new category of Chartered Architectural Technologist of the Year Award.

MODRIC WASHROOM NOW AVAILABLE AT NBS NATIONAL BIM LIBRARY

Allgood has updated its Modric Washroom BIM objects, which can now be accessed from the NBS National BIM Library. Eleven BIM objects are being featured, including recessed washroom panels, surface mounted hand dryers and a range of accessories.

Tailored to the construction industry's aim of meeting new technological developments, the NBS National BIM Library ensures users can easily find and download BIM objects. In addition, the library also allows users to drag and drop objects into their NBS specification via a downloadable plug-in tool.

Made from marine grade 316 stainless steel, the Modric Washroom objects are available in Revit 2015 and IFC, and meet the internationally recognised



NBS BIM Object Standard.

Franz Lorenschitz, marketing manager at Allgood, said: "BIM is shaping the future of construction and the architectural sector. By offering access to our range on the BIM library, we hope to meet the digital needs of architects and designers embracing the digital design era."

www.nationalbimlibrary.com/allgood-plc

AIJ PEOPLE

ASSA ABLOY ACCESS CONTROL MAKES TWO KEY PROMOTIONS.

ASSA ABLOY Access Control has appointed a new regional sales manager and business development executive.



David Smyth takes on the manager role and will be responsible for identifying and

qualifying new sales channels, developing and integrating new OEM partners, providing support to systems integrators as well as strengthening relationships with existing customers. David joined the firm as a technical engineer in October 2016.



Claire Jones is the business development executive, who will be supporting and

further developing relationships with the division's current partners. Claire previously worked as a marketing assistant for ASSA ABLOY for more than four years before her promotion.

GEZE BOOSTS SPECIFICATION AND SALES TEAMS



GEZE UK has further strengthened its specification team with the appointment of

James White (above left) who takes up the role of specification manager, covering the south of England including south London, as part of the specification team expansion.

He was previously an area sales manager for the window technology team at GEZE UK. His new role will see him developing specifications with architectural practices across all GEZE product ranges, providing technical support and boosting the wider sales

team. Before joining GEZE UK last year, James worked as a business development manager for Somfy within its commercial building solutions division.



The recent expansion of GEZE UK's external sales teams has seen Luke Carroll (above) appointed to the role of sales manager for Window Technology Systems.

He joined the company in 2011 as a member of the technical support team, moving to the estimating department three years later, before his recent move into sales.

Luke will look after the southern region. His area covers Lincoln, Derby and Nottingham in the east, through to mid and South Wales in the west, and from Birmingham and the Midlands, to London and south east, and down to Cornwall.

NEW ROLE TO SUPPORT SAFEHINGE PRIMERA IRONMONGERY CUSTOMERS



Safehinge Primera has created a new role of partner sales support, taken by Keith Evans

DipGAI (pictured). Keith will now provide specification and sales support for component sales – including finger guards, anti-ligature locksets and door components for mental health.

Keith says: "Coming from an ironmongery specification background and combined with my experience at Primera I'm ideally placed to add value to our partners' sales and specification process – especially in attending joint meetings with our partners and their clients, where I'll provide in-depth product knowledge to help our customers make the right decisions."

POWERMATIC®

Concealment when you want it
Performance where you need it



Designed and manufactured in the UK, Powermatic controlled, concealed door closers deliver exceptional performance as well as a host of benefits that surface-mounted closers cannot match:-

- Superior aesthetics
- Reduced risk of vandalism
- Suitability for anti-ligature applications
- Compliance with relevant fire performance standards for one-hour and half-hour fire doors
- Enable doors to meet accessibility requirements
- Perfect for hotels, healthcare, education, care homes, sheltered accommodation, commercial and many other situations.
- Available in standard and Free Swing models

Visit our new website: concealeddoorclosers.com

Tel 0121 766 4200 info@samuel-heath.com concealeddoorclosers.com

SAMUEL HEATH

since 1820



OXFORD IRONMONGERY HELPS WINERY WIN DESIGN AWARD

ELEMENT AND EXOVA MERGER MOVING FORWARD

Element Materials Technology (Element) and Exova Group Limited (Exova) have joined forces. The new global testing services partner has already put underway an integration program to bring the two businesses and their people together.

The expanded Element Group will operate under the leadership of president and CEO, Charles Noall, alongside a newly-formed executive team which blends testing expertise and experience from both Element and Exova. The existing Element Board will continue to review the overall performance of the business and also to determine group-wide strategies and priorities. This experienced leadership group will lead Element's global community in the delivery of the company's growth objectives.

Commenting on the integration of the two companies, Noall said: "As I focus on building relationships with our new Exova colleagues, visiting the laboratories to personally meet the teams, I have been overwhelmed by the positive reaction from all areas of the business. Our people have hit the ground running and are fully informed about the many opportunities this alliance is set to bring to our customers as we transition in the coming months into a fully integrated business."

This latest acquisition by Element follows a period of significant growth for the business. The group specialises in providing materials and product qualification testing, consulting, certification and calibration services to the global aerospace; fire & building products; infrastructure and environmental; oil and gas; and transportation and industrial sectors.



Oxford Ironmongery helped the Winery at One Hundred Hills Vineyard to scoop a top award at the Chiltern Society Building Design Awards.

Working with architects Nichols Brown Weber, a specification was prepared using principally Kirkpatrick door furniture, Samuel Heath Perkomatic door closers and CES high security europrofile cylinders on an Oxford Ironmongery patented keyway.

Commenting on the project Oxford Ironmongery's Chantelle Coney DipGAI, said: "The design of the building – and the landscape it's set in – drew me straight to the Kirkpatrick door furniture range in antique black. The other consideration, because it is a sensitive commercial building, was security. The obvious choice was a masterkeyed suite on our keyway from CES."

Oxford Ironmongery director and GAI vice-president Julian Newman said: "Nichols Brown Weber is a fantastic practice to work with and Kingerlee (main contractor) bought the whole team together."



AWARDS FOR HOTEL ACCESSIBILITY PRODUCTS OPEN FOR ENTRIES

Entries for the Bespoke Access Awards 2017/18 are now being invited. The awards, now in their second year, are an international design competition which seeks original ideas to improve access and experience for hotel guests with disabilities. Peers in the UK House of Lords initiated

the competition, which continues to be managed by RIBA Competitions.

The scope of the competition is wide-ranging. It seeks to identify and reward the best innovative ideas from the fields of architecture and interior design, product design and service design.

The competition is international and open to everybody. The competition organisers particularly welcome entries from designers and architects with disabilities. Entries will be assessed anonymously.

The judging panel includes James Dyson Paul Gregory, global specifications director for Bespoke Hotels, and member of the Chartered Institute of Building Services Engineers. The judging panel will convene following conclusion of the submission process in early 2018 to assess and shortlist entries across five categories.

To learn more about entering process visit access.bespokehotels.com/bespoke/registration.

ABLOY UK SECURES SPIRE MANCHESTER HOSPITAL



Abloy UK has supplied Spire Manchester Hospital with advanced key management systems to improve the security of medicines and increase nursing efficiency.

Spire Manchester Hospital is part of Spire Healthcare hospital group, which recently invested £70m to build this brand-new flagship hospital in Didsbury, Manchester.

Dawn Davies, matron and head of clinical services at Spire Manchester Hospital, said: "When designing and commissioning a brand new private hospital, we wanted to ensure we had equipment at the forefront of medical technology. The systems from Abloy give us enhanced security measures and management of controlled drug storage and access."

Spire Manchester Hospital specified a combination of PROTEC2 CLIQ keys and cylinders which were retrofitted to a range of Bristol Maid drug cabinets. Staff CLIQ keys were housed in Traka 21 key cabinets fitted across the wards.

PROTEC2 CLIQ is based on mechanical high security disc cylinders combined with highly encrypted electronic locking and identification.

Power to the lock is provided by the CLIQ key, therefore no batteries or wires are required to either the lock or drug cabinet.

The system allows for remote key management, providing comprehensive audit trails on locks and padlocks, and the ability to remove lost or stolen keys from the system, substantially increasing the security of controlled drugs.

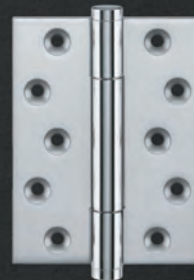
PROTEC2 CLIQ was combined with the Traka21 key management system, which provides nurses' access to a single key for the duration of their shift. By simply entering a PIN code to access a specific key which they validate using the wall programming unit, they can access every cabinet they're authorised to open.

The system has been well received and is being recommended to other Spire Hospitals.



SIMONSWERK
HINGE TECHNOLOGY

TRITECH HIGH PERFORMANCE AND STRENGTH



TRITECH

- › solid brass, concealed bearing hinge
- › high performance CE marked
- › weight carrying capacity to **160kg**
- › available with 14 designer finials
- › various finishes including PVD

t: +44 (0)121 522 2848
e: info@simonswerk.co.uk
www.simonswerk.co.uk



ANGIE CORKHILL • GAI TALK

// Since starting at the GAI in July everyone I met mentioned the Education Awards lunch and told me what a fantastic event it was and how much I would enjoy it. Well, they weren't wrong! The atmosphere in the room was amazing and it was really inspiring to see so many members there to celebrate the achievements of our new Certificate and Diploma holders.



I encourage all new Diploma holders to join the Institute and become part of a regional network of individuals committed to continuing professional development to achieve or maintain the title of Registered Architectural Ironmonger (RegAI). The IAI meetings also provide a great networking opportunity and membership is open to anyone working in the industry.

The status of RegAI, and the mark of quality that it represents, has never been more important as the industry faces scrutiny in the wake of the Grenfell Tower tragedy. Each of us has an important role to play in showcasing the professional standards demonstrated by a qualified architectural ironmonger. Our members are integral trusted partners within architectural design and builds.

At the Guild, we continue to strengthen our reputation and promote the value of our niche in the industry. Our recent public submission to the Hackitt Inquiry is testament to this. Thank you to all members who contributed to this important piece of advocacy work.

As the year draws to a close, I look forward to serving you in 2018. Working with the Executive Committee, we will evolve our strategy and formulate growth plans for next year. My immediate focus will be on building a strong team to deliver our ambitious targets and to continue to meet as many members as I can to understand your businesses and how we can better support you.

We'll soon be holding our Guild AGM and the Institute AGM, so please mark the date in your diaries now (see over the page for dates).

In the meantime, I'd like to wish you all a very happy, safe and prosperous new year.

Angie Corkhill
Director of the GAI

GAI GRENFELL RESPONSE CALLS FOR 'FORGOTTEN PROFESSIONALS' TO BE BROUGHT BACK

In a series of 12 recommendations submitted to the Independent Review of Building Regulations and Fire Safety, the GAI has called for the recognition of the 'forgotten professionals' in the construction supply chain.

The re-introduction of the Clerk of Works role on site and compulsory use of a fully qualified architectural ironmonger are just two of the recommendations put forward by the Guild to the inquiry, led by Dame Judith Hackitt.

The call for evidence was launched in July in the wake of the Grenfell Tower fire.

In its submission, the GAI has also highlighted the need for mandatory fire door inspection in the UK and for larger fines for non-compliance, a process that is already in place in the USA and Australia.

Douglas Masterson, technical manager at the GAI, said:

"The Guild's response has been formed from the collective opinion of the architectural ironmongery industry, including very experienced professionals who have worked around the world on complex fire safety issues. Fire door hardware and other aspects of ironmongery specification play a crucial role

in fire safety. The voice of these professionals must not be lost in critical discussions on safety and standards."

In its response to the Hackitt Inquiry, the Guild urged the review team to review a wide range of documents which contain contradictions or ambiguity. It has identified at least 18 separate documents and legislation that are relevant to fire safety specifically within the architectural ironmongery and the allied fire door industries that it thinks should be given more clarity.

The submission points out that many of the standards within the industry are not mandatory for building construction, such as BS 8300 relating to accessibility, and are seen purely as best practice guidance. For architects and other construction professionals, this can cause confusion as to what guidelines they should be following resulting in inconsistency and error.

Reiterating calls made by this year's Fire Door Safety Week, the Guild has emphasised the importance of third party certification of fire safety products and the need for a mandatory installer registration scheme for the installation of fire doors.

// Fire door hardware and other aspects of ironmongery specification play a crucial role in fire safety. The voice of these professionals must not be lost in critical discussions on safety and standards"

The GAI's key recommendations:

1. There should be mandatory usage of fully qualified architectural ironmongers to compile an ironmongery specification.
2. A similar mandatory scheme to Gas Safe should be adopted in to law for installation of fire doors.
3. Fire door inspection should be mandatory in the UK in similar fashion to USA and Australia. Heavy fines should be levied for non-compliance.
4. Third party certification of fire safety products should be mandatory.
5. There needs to be an individual who is tasked with the sign-off of each stage in the process which is related to fire safety. This should include any deviation away from accepted and original signed-off specification.
6. There should be a complete review of the sign off process with the introduction of mandatory sign off procedure which is similar to the Building Control Amendment Regulations 2014 (BCAR) in the Republic of Ireland.
7. The role and position of the Clerk of Works on site should be re-introduced as a means of ensuring on site compliance in installation.
8. Approved Document B should be revised to remove ambiguities and be much clearer to understand.
9. Approved Documents in general should be written in such a way that the requirements of each one do not contradict another.
10. The Regulatory Reform (Fire Safety) Order 2005 should be amended to provide greater involvement of the fire service with regards to the sign-off of buildings
11. The responsible person should be named on the Health and Safety poster with a contact number giving the realistic times for when a person will answer.
12. A clear and transparent mechanism should be available which allows tenants to contact the responsible person/local authority/building control to report concerns on fire safety.



NEW MEMBERS

ADI-n Limited

Alan Wong
alan@adi-n.com
Affiliate, Hong Kong

AQFAL trading & Services

Ziayad Abdul
Azeezmd@aqfalqatar.com
Affiliate, UAE

Astute Security Limited

Graham Crane
info@alertlock
smiths.co.uk
Affiliate, UK

Fullham Brass Ironmongery Ltd

Colin Wilkins
manager@fulhambrass.com
Full, UK

Glory Top Architectural Hardware Ltd

Wilson Fu
wilson.fu@glorytop.com.hk
Affiliate, Hong Kong

Laidlaw Gulf

Joshi Mahadev
joshi@laidlaw.ae
Full, UAE

SAVE THE DATE

GAI director Angie Corkhill has confirmed the dates of the 2018 AGMs for both the Guild and the Institute at the recent Education Awards.

The IAI AGM will be held in the Midlands on 2/3 March 2018. The IAI Awards will also be held at the AGM celebrating the talent and achievements of individuals in the ironmongery industry.

The GAI AGM and Conference will be held in London on Friday 18 May. The format will be the same as this year, a one-day conference focussing on the Guild's achievements over the past year and its plans for the coming year and presentations from industry.

Further details on the venue and timings will be shared with members in the New Year.

MEETING BY GASLIGHT



The Midlands branch had a meeting with a difference in November. The members met at the lock museum in Willemhall lit by the original gas lighting of the time to recreate an authentic atmosphere.

Karen Nelson, chair of the Midlands branch, said the evening was a success: "It's a living museum and the premises of a lock maker and his family. It was a sell out and well attended. The members were treated to an informative tour of the house and were given a live demonstration of making a padlock bolt in the forge. What was interesting was a map of Willemhall in 1904 showing the decline of lock making in the area. There are only 300 lock makers left."

NEW IAI HONG KONG BRANCH CHAIR

The IAI has appointed Nelson Wong as the new Hong Kong branch chair. Nelson, deputy vice president of dormakaba in Hong Kong, Macau and Taiwan, has over 20 years' experience in the ironmongery industry.

Nelson has been a member of the Institute since November 2012 when the Hong Kong branch of the Institute was inaugurated at the British Consulate General Hong Kong. He has since introduced the GAI education programme to his own team: it now has four DipGAI holders and three RegAIs in China and Hong Kong.

Nelson Wong said: "As branch chair, I want to improve the understanding of the importance of using qualified Registered Architectural Ironmongers (RegAI) amongst the construction industry in China, especially architects."

"I also want to promote the GAI education and CPD programme to all ironmongers to encourage them to get their Diploma qualification and then become a RegAI. Having the RegAI designation indicates professionalism and a commitment to continuous learning."

Nelson is taking over from John Tibbs who was chair of the Hong Kong IAI branch for two years.

SECURE A COPY OF THE NEW GAI CPD SEMINAR

The GAI has launched its fifth new RIBA CPD: Ironmongery and Security.

The seminar looks at both mechanical and electrical locking devices as well as security standards for doorsets and windows. It also covers key industry standards as well as Approved Document Q and the Secured by Design initiative.

It is the latest CPD seminar available to members, adding to the GAI's existing CPD portfolio covering:

- Ironmongery and Accessibility
 - Specification of Door Hardware – an Architect's Guide
 - Ironmongery for Fire and Escape Doors
 - A Specifiers Guide to Access Control
- As the training is RIBA approved, architects will benefit from double learning points for attending a presentation of this CPD.

These CPD resources are available to GAI members to purchase for £300 (exc. VAT).

For further information on any of the GAI CPDs or to purchase any of the presentations, contact technical@gai.org.uk.



Introducing the Ultimate Care Home Closer

Guardian by EXIDOR

More than just a swing free
door closer...

ANTI-SLAM FINGER PROTECTION

Controls the motion of the door in swing
free mode, so that it cannot be slammed.

DRIFT RESISTANCE

Removes the temptation to wedge open fire doors.

To find out more -

View our Guardian product
video at **exidor.co.uk**



Visit **www.exidor.co.uk** for further information on the
Guardian electro-magnetic closer, or call us on **01543 578661**

 @ExidorLtd

EXIDOR

MADE IN
BRITAIN

CE CE marked for Safety
Certified to European EN Standards

 **certifire**



In the last of the series of reuniting with Diploma holders, we catch up with **Adam Taylor**, general manager of Hafele in Dubai

I have been the general manager of Hafele based in Dubai since 2005 having originally moved here in 1999 with Geze and Yannedis.

I am responsible for the six countries that make up the GCC. Hafele is more traditionally a supplier of furniture fittings in most international markets but here in the Middle East we are more commonly known for our architectural hardware products. This is because we have concentrated strongly on specification work with architects and

interior designers which I believe is the best way to win business and is the route of my earlier experience in the UK and the GAI before I moved overseas. I manage a very diverse team of multinational and multi-religion staff, mainly from the Philippines, India and the Arab world.

The projects my teams work on usually start with the specification process and are followed through to tender stage with contractors and joinery fabricators. We supplied to the Burj Khalifa, currently the

// Today I am fortunate to head up a fantastic team of over 100 staff in the GCC and have consistently enrolled my employees in the GAI program to give them that same platform I was given"

world's tallest tower but we are presently working on the Kingdom Tower in Saudi Arabia which is going to be even taller when completed.

My entry into the industry was by joining Allgood PLC back in the early 1990s. I had no knowledge about the vast array of products or technical aspects of the industry and was fortunate to join a company that strongly supported the GAI education programme which I started immediately. In 1994, the year I qualified, Allgood took three of the top four highest exam result places. Sadly it was me that just missed that third prize. Nevertheless it put me on a path that has taken me all around the world.

My move to Dubai was originally a two-year plan but as the business evolved and grew, so did my responsibility. Today I am fortunate to head up a fantastic team of over 100 staff in the GCC and have consistently enrolled my employees in the GAI programme to give them the same platform I was given. I have more than 20 GAI staff in the Middle East. In 2013 I founded the first GCC branch for the IAI. ■

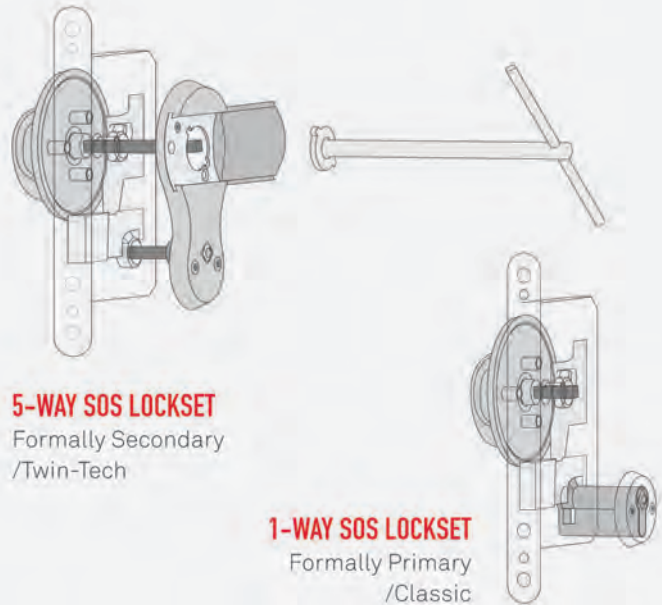


NEED TO ENSURE STAFF ACCESS IN CHALLENGING ENVIRONMENTS?

With two independent spindles, our anti-ligature Staff Override System (SOS) locksets have a reliable, patented override mechanism where the key always dominates the internal turn/pull. And 5-way SOS has four more emergency override methods, ensuring staff can get access no matter what.

Since Primera joined Safehinge we've made a number of improvements to our project registration scheme to better support our architectural ironmongery partners.

Get in touch to find out more, or watch the video
www.safehingeprimera.com/sos
0330 058 0988



SAFEHINGE PRIMERA[®]



Security Tech Germany

The Complete Security Solution

Domestic, Commercial, Industrial and Mobile



www.abus.com

SHIP SHAPE

The newest attraction on Belfast's Titanic Quarter is a boutique hotel with attention to heritage detail right down to the hardware

IMAGES COURTESY OF THE TITANIC HOTEL AND GARETH O'CAHAIN



// The hotel is in one of Belfast's true architectural gems, the former headquarters of Harland & Wolff, known locally as the Drawing Offices"

The latest addition to Belfast's Titanic Quarter opened in September to wide applause. The Titanic Hotel is a four-storey, 84-bedroom boutique hotel and public heritage space.

Designed by RMI Architects, built by Abercorn Construction and with dline hardware specified throughout, it is a restoration of the former Harland & Wolff Headquarters building – known as the Drawing Offices. There are two drawing offices at right angles to the sandstone façade. The first is now the Titanic Hotel's largest function room; the second is the main bar. The hotel has abundant natural light – skylights run the length of both rooms – with more glass along the entire front of the hotel.

The iconic building is where RMS Titanic and 1,000 other ships were conceived and designed, (including the plans for Olympic, Titanic and the SS Nomadic and, in later years, naval warships such as HMS Belfast). It pays tribute to the Titanic in every room and in detail.

The renovation was commissioned by the Titanic Foundation, with the help of a £5m grant from the Heritage Lottery Fund's Heritage Enterprise programme.

The hotel is operated by Harcourt Developments, an international property development company that specialises in restoring and renovating listed heritage buildings with the hugely successful and award-winning Titanic Hotel in Liverpool's historic Stanley Dock »»

The renovation of the Drawing Offices are the twin pillars of the new hotel design

area in its portfolio. The £28m hotel brought over 75 new jobs to the city and over 230 people were employed by Harcourt during the hotel construction. Over 30 apprenticeship positions for students, trainees and the previously unemployed were also fulfilled during construction.

First class preservation

Built in three stages between 1889 and 1922 the building was partially restored in 2008 by Titanic Quarter Ltd for use as its HQ and office space. As a listed building all redevelopment work maintained the building's character and appearance, and safeguarded its special architectural interest.

Now the building has been meticulously restored with many authentic spaces from the original offices retained, including the telephone exchange, which received the first communication of Titanic hitting the iceberg. Other heritage spaces preserved include the boardroom, directors' entrance and lobby and former directors' offices. Above Drawing Office No 2 is the Presentation Room, where prospective buyers were shown vast oil paintings of Harland & Wolff's ships and could look through a glass wall at the company's designers beaver away on plans below. This



// The challenge was to have the desired design and period appearance whilst meeting all the modern day EN standards and fire regulations"

room has been decorated to look as it did in historic photographs including the same tiles that adorned the Titanic's swimming pool. Most floor and wall tiles were restored from the main building. In the original directors' entrance hall is the remarkable curved, etched glass telephone exchange where on April 14 1912 the operators were paid an extra guinea each to stay all night and not leak the news of the Titanic's sinking to the press. Also on show is the mahogany drawing table of Thomas Andrews, its chief naval architect, who saved many

The hotel sits next to the Titanic Belfast visitor experience, named the 'World's Leading Tourist Attraction' at the World Travel Awards 2016 (below); diine hardware used in the hotel (above)

passengers' lives by helping them on to lifeboats before losing his own in the disaster.

Architectural detail

The interior design brief given to Dublin-based ADI Studio was to appeal to business and heritage guests. Along with interpretation consultants Tandem and conservation architects Consarc, ADI developed a scheme which celebrates the story of the industrial shipbuilding heritage of H&W whilst creating an exciting experience for the leisure guest. This includes industrial-styled bedrooms with original rivets exposed and replicated tiles from the luxury shipliners.

"The Drawing Offices were always considered the creative heart of the shipyard, so it was a fitting tribute that where H&W once designed the most luxurious floating hotels in the world, that we now have a unique boutique hotel within these very buildings," says Maria Rice, director of ADI Studio.

"The building has been described as the most authentic Titanic hotel in the world, not due to the glamorous surroundings reminiscent of a first class liner, but due to the integration of so many historical artefacts and original architectural elements retained throughout its new life as a hotel. Also, many of the original materials found in the Drawing Offices were materials left over from fitting out the luxury liners.

"We've tried to be true to the story behind the Harland and Wolff headquarters and Drawing Offices when redesigning the spaces. The Victorian industrial styling of the bedrooms represent the art of shipbuilding in H&W's heyday and this coupled with the elegance of the ground floor rooms lean to a more sympathetic 1900s inspired refurbishment reflecting the original period styling of the spaces," Rice adds.

dline UK was retained to supply the ironmongery to the new iconic hotel. "It was a challenging project to accommodate period door ironmongery to mostly original but some replica doors," says Paul





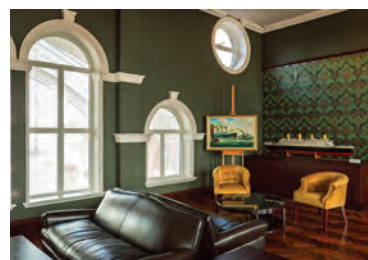
Kavanagh, sales director at dline Ireland. "The challenge was to have the desired design and period appearance whilst meeting all the modern day EN standards and fire regulations."

But the company met the challenge with gusto. "We were totally inspired by the building almost in a haunting way, particularly the old drawing office," says Kavanagh. "We worked closely with ADI Studio Design who had the vision from the start of the project to the overall and final appearance. The ironmongery was in an antique brass finish with some bespoke handles. It is not every day you meet the challenge of a very tall double historic set of old

timber entrance doors (the original entrance doors) that are required to automatically open in the event of fire for air intake/smoke extract which have to be electrically locked and to have a dual use of a VIP entrance on special occasions and to try and keep the design of the historic door intact by concealing most of the fittings!"

So often buildings designed to pay homage to a given subject result in pastiche, or feel like a theme park or museum but the end result of the Titanic hotel design has delighted critics and locals. "Its twin purpose-built Drawing Offices, constructed to allow maximum natural light, are both magnificent and strikingly beautiful," said *The Daily Telegraph*.

Above: Drawing Office No 2 is the light-filled bar while (right) the Presentation Room above it has been restored



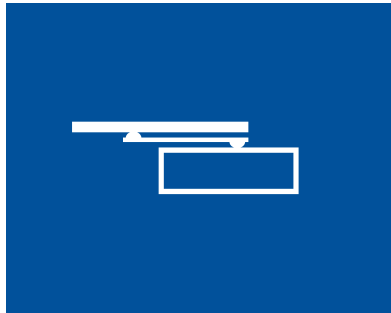
The Guardian said: "the decor strikes the right balance between heritage and innovation." ■

View a video of the hotel at irishnews.com/news/2017/09/11/news/inside-belfast-s-new-titanic-hotel-1132757/

Smart and secure access solutions



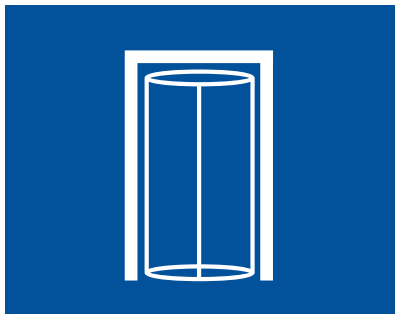
Mechanical Key
Systems



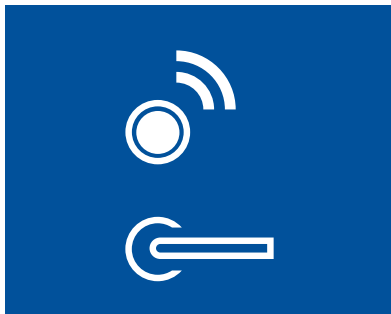
Door Hardware



Interior Glass
Systems



Entrance Systems



Lodging Systems



Safe Locks



Electronic Access
& Data



Service and
Maintenance



Movable Walls

With the merger of Dorma and Kaba we now have an even wider portfolio of complimentary products available from a single source. Contact us for more information on our range.

dormakaba
01462 477 600
Info.gb@dormakaba.com
www.dormakaba.co.uk



gai guild of
architectural
ironmongers
advancing architectural ironmongery

dormakaba



RISING STARS

This year's GAI Education Awards celebrated the educational achievements of the industry in style

The educational achievements of the door and window hardware industry's rising stars were celebrated at the Guild of Architectural Ironmongers (GAI) annual Education Awards.

Held at the Royal Lancaster hotel in London in November, the awards celebrated the architectural ironmongery professionals who have achieved a GAI qualification in the Certificate in Architectural Hardware or Diploma this year. »»



L-R: Steve Bewick of dormakaba with GAI president David Stacey and Rod Reading also of dormakaba. Above right: Guest speaker Matt Dawson



Of the 87 learners who attained the Certificate in Architectural Hardware and the 53 students who completed the full GAI Diploma, seven also received awards at the prestigious ceremony.

Since 1980, the GAI Education Awards have included Gold, Silver and Bronze awards for the top Diploma students and the Pinnacle Award, sponsored this year by ASSA ABLOY, which is given to the student with the best aggregate results over the three years of the Diploma programme. Awards for first, second and third best Certificate students are also given.

Eryl Jones, managing director of ASSA ABLOY Security Solutions., presented this year's Pinnacle Award to Lee Gardner, technical manager of M E Duffell. In his job, Lee uses his wealth of product knowledge and experience to help with product training and to manage the technical team.

He said: "This is all about personal development for me. I've been with

Duffells for 30 years and came straight into the business from school with no real qualifications. So I decided to go for the GAI Diploma. I received the gold award for Stages 1 and 2 so that spurred me on to Stage 3.

"It wasn't easy as I had to learn a completely new process of how to schedule architectural ironmongery, which isn't part of my normal day job. But I've loved it, and it's a wonderful personal achievement to have done so well.

"I knew I had loads of product knowledge, but through the Diploma I learnt so much more. I'm now in charge of internal staff training and will be encouraging my colleagues to go for this excellent qualification."

Jean-Louis Bramwell from Allgood plc won the GAI Diploma Gold award for attaining the highest score in the final stage of the Diploma programme. He started as an apprentice in the manufacturing department of Allgood in 2013. Shortly after completing his apprenticeship, Jean-Louis moved into sales support and has recently relocated to Glasgow to undertake an external sales role.

He said: "I knew that getting the GAI Diploma would be good for my career. It's the definition of what it means to be a professional in this industry.

"Everyone in the door hardware industry should do this qualification. It's hard work, but my advice is to be optimistic and don't give up. It's very useful the way the Diploma syllabus really dovetails with my job, so that also helps a lot.

"I'm definitely going to continue with CPD and I aim to become a Registered Architectural Ironmonger. For me, that ongoing training and development is absolutely critical, because I can already see how much the door hardware industry, product mix and regulatory regime is changing. It's going to be essential to stay up-to-date with what looks like being a very exciting future."

The winners and newly-qualified Diploma holders were presented with their awards by David Stacey, president of the GAI, and the event's

// I had to learn a completely new process of how to schedule architectural ironmongery, but I've loved it and it's a wonderful personal achievement to have done so well. I had loads of product knoweldge but through the Diploma I learnt so much more"





keynote speaker and England rugby star, Matt Dawson.

The GAI president David Stacey urged the industry to keep learning. "In addition to passing qualifications, it's imperative that as professionals we continue to learn and keep our knowledge up to date. The Institute of Architectural Ironmongers' CPD programme helps members to do this. It is the next step in demonstrating your commitment to professionalism by qualifying as a Registered Architectural Ironmonger (RegAI).

"For those students who have recently passed their Diploma, this prestigious title is only one year away. Our RegAIs are held in the highest regard within our industry and becoming a RegAI is a symbol of your commitment to keeping your knowledge up to date and is the benchmark standard for architectural ironmongery."

Guests also celebrated the growing success of the GAI education programme. This year, exams were sat by 332 learners across all three stages

of the GAI online training programme. Learners came from 22 different countries, with 49% of them based outside the UK. There has been a particularly high number of learners in South Africa, China and the UAE."

Angie Corkhill, director of the GAI, said the GAI students have inspired her. "Since joining the Guild in July, I have continued to be impressed by the education programme and the quality of the students who are becoming the next generation of highly skilled architectural ironmongers. »»

GAI Education Certificate and Diploma holders at the awards in the Royal Lancaster Hotel



Above: Gold Diploma winner Jean-Louis Bramwell with Matt Dawson and David Stacey

"These results reflect all of the hard work they've put in throughout their qualification, and now they are ready to work with architects, contractors and others to schedule and specify the ironmongery for every door and window in a building."

"As the only recognised architectural ironmongery qualification in the world, the education programme has over 50 years of experience in training future generations of architectural ironmongers to British and European standards."

The Certificate in Architectural Hardware is particularly useful for

those working in warehouse and trade counter roles, procurement, estimating, customer service, technical support, sales and administration. Comprised of two stages with 24 online education modules, the Certificate covers the product knowledge a practising architectural ironmonger is required to know. The modules include helpful explanations, animations and video clips, all geared to engage learners in easily digestible chunks. There are also unlimited self-tests.

Following completion of the Certificate in Architectural Hardware, students can progress to the GAI Diploma. The Diploma builds on product knowledge and enables the writing of accurate hardware specifications and quotations. The qualification is particularly suited to those in customer service, contract management, scheduling and estimating, and sales. To become a full GAI member, a company must have at least one employee who has passed the GAI Diploma.

dormakaba sponsored the GAI Education Awards, and ASSA ABLOY sponsored the Pinnacle Award. ■



Above: First place Certificate winner Thennarasu Parimalam; below Pinnacle Award winner Lee Gardner

The full list of Education Awards winners in 2017 is:

THE PINNACLE AWARD:

Lee Gardner, M E Duffell

THE GAI DIPLOMA:

Gold – Jean-Louis Bramwell, Allgood plc

Silver – Lee Gardner, M.E Duffell

Bronze – Garrath Willshaw, Lloyd Worrall

CERTIFICATE IN

ARCHITECTURAL HARDWARE

First – Thennarasu Parimalam, dormakaba, Kuwait

Second – Iain Cameron, Scotdor

Third – Insiya Kanchwala, Häfele Dubai and **Jerome Elcullada**, Consort, Dubai

// These results reflect all of the hard work they've put in throughout their qualification and now they are ready to work with architects, contractors and others to schedule and specify the ironmongery for every door and window in a building"



GUILD OF ARCHITECTURAL IRONMONGERS

GAI In-house Training Service

The GAI's latest initiative is an in-house training service on a number of topics which can be tailored to your specific requirements.

Topics which can be covered include:

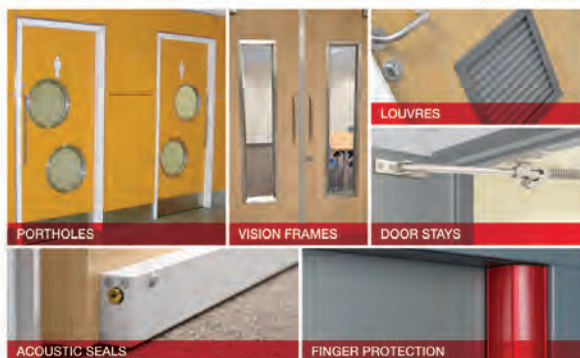
- Ironmongery: product and specification
- Access Control: product and specification
- Building Information Modelling (BIM)
- Environmental Product Declarations
- Accessibility
- Security
- BS and EN standards
- Sales and Negotiation for the ironmonger

For further details and pricing please contact Douglas Masterson on technical@gai.org.uk



SPECIALIST ARCHITECTURAL
HARDWARE SUPPLIERS
TO THE DOOR
OPENINGS INDUSTRY

ZEROplus



AT ZERO WE CAN CATER FOR ALL YOUR DOOR HARDWARE REQUIREMENTS; IN FACT WE SUPPLY EVERYTHING EXCEPT THE DOOR! INCLUDING AMONGST OTHERS: ZERO DOOR SEALS, ANEMOSTAT VISION FRAMES, SLIMPOT PORT HOLES, FBLS FIRE RATED LOUVRES, FINPROTECT FINGER PROTECTION, FRICTION STAYS, FLUSH BOLTS AND MANY OTHER ITEMS OF DOOR HARDWARE. PLEASE CONTACT US FOR A COPY OF OUR 260 PAGE PRODUCT CATALOGUE.

Zero Seal Systems Ltd
Units 43 - 45 Ladford Covert, Seighford, Stafford, ST18 9QG, United Kingdom
Tel : +44 (0)1785 282910 E-mail : sales@zeroplus.co.uk
WWW.ZEROPLUS.CO.UK



P H O E N I X

COOKE BROTHERS

01922 740011 | sales@cookebrothers.co.uk

HIGH PERFORMANCE IRONMONGERY

WE ARE PLEASED TO ANNOUNCE
THE LAUNCH OF OUR **NEW** WEBSITE
www.cookebrothers.co.uk

Buy Online



CRIME STOPPERS

Flow of movement in buildings balanced with safe and secure environments is a challenge for the education sector. **David Hodgkiss**, national sales manager of ASSA ABLOY Access Control explores some solutions.

Creating the right level of accessibility and an efficient flow through a building for staff and students is now a key priority for those working in the education sector; however, this must be balanced with the need to provide a safe learning environment. Architects and contractors must consider the need to install access control solutions to meet this requirement in today's modern learning environment.

Security within the sector is a growing concern. An investigation by the BBC revealed that 30,394 crimes were reported in 2014 by education establishments (excluding universities) with theft, burglary or robbery as the most common offence, with 13,003 incidents reported. Meanwhile, a survey led by the Association of Teachers & Lecturers discovered that over a quarter of education staff said they had faced aggression from a student's parents or carers.

Learners have the right to a safe environment in which to be educated, while staff should be able to work without fear of being threatened or harassed. While it can be difficult to acknowledge, the fact is that schools, colleges and universities must now take precautions to protect staff and children from these types of incidents.

Securing gates and access points around the site, plus ensuring any visitors register when entering, are just two basic but effective methods of creating a safe learning environment for staff and children. But what are the latest available solutions for those seeking a more sophisticated and intelligent approach to access control, which not only protects but also enhances the learning environment?



Main picture: the University of East Anglia needed a security solution for Crome Court student accommodation. **David Hodgkiss** above.

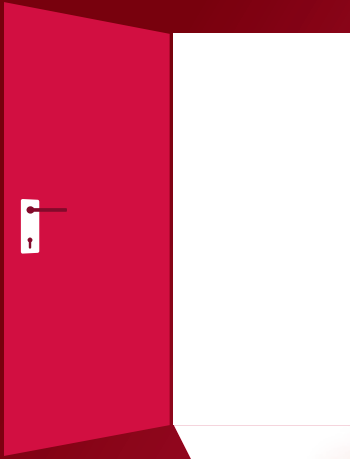
// What are the solutions for those seeking a more intelligent approach to access control?"

Unlocking solutions

In addition to assuring the safety and security of students and staff, the education sector is also looking for solutions that help cut energy costs, reduce maintenance and can be easily integrated with existing security measures.

Common problems with traditional security systems include lost or stolen keys. It can be inconvenient, time-consuming and expensive to change these locks, and the re-issuing of keys can be considerable. There is also the risk of stolen keys being copied, which compromises security even further.

It is also not uncommon for larger education sites, such as secondary schools and universities, to leave doors unlocked for long periods of time because of the inconvenience and hassle of opening and securing the room every time it's entered. »



UNLOCKING THE DOORS OF OPPORTUNITY



FIRE, SECURITY, ENVIRONMENTAL AND ENDURANCE TESTING OF DOORSETS AND BUILDING HARDWARE

- New European Testing Laboratory
- Testing to UL, EN and BHMA Standards for Global Market Access
- Door and hardware testing
- Weather resistance
- Security of doorsets and windows

UL Door and Hardware Laboratory

Warrington, United Kingdom

E: BuildingLifeSafety.eu@ul.com, T: +44.1925.258.876

Learn more here: UL.com/door-and-hardware-lab

UL, the UL Logo, and UL certification marks are trademarks of UL LLC © 2017. Other marks are the property of their respective owners.



Thank you to all our customers

Wishing you all a happy Christmas and a prosperous new year

Looking forward to doing business in 2018

From all the ARC Team; Phill Parkinson, Danielle Parkinson, Nicole Jones, Chris Lazell, Luke Burke, Lauren Roberts



Tel: 01204 393212 | www.secure-arc.com

Secure ARC Ltd, Unit 36 Waterloo Ind Est, Bolton BL1 2TN





Aperio-EuroL100-Standard

This, however, increases the possibility of opportunistic theft and malicious damage.

To meet this need, ASSA ABLOY Access Control has introduced Aperio®, a battery-operated wireless locking technology. This enables mechanical locks to be wirelessly linked to a new or existing access control system, without any need to modify the door. Doors can be scheduled to unlock in line with room booking systems or classes. Once a class has finished, doors automatically lock, leaving the room secured.

The system's ability to update who is able to access a room online and in real time is hugely advantageous to education sites, who might need to respond fast and implement security measures quickly.

Its escape and return configuration is ideal for the education sector, allowing a door to remain unlocked for a certain amount of time after the door has been opened from the inside. Should an incident take place outside a classroom, staff and students can quickly return to the safety of this classroom.

Stop thief

It is estimated that a third of the UK's university population becomes a victim of crime, predominantly either theft or burglary. Owners of expensive laptops and bikes are popular targets, particularly during freshers' week, with approximately 20 per cent of theft incidents occurring in the first six weeks of the academic year.

With this in mind, the University of East Anglia (UEA) required a trusted access control solution for its

An intelligent access control solution is one of the most effective means of balancing this need for the right level of accessibility with creating a secure learning environment"

new student accommodation. The university sought a locking system for its newest campus residence, Crome Court, comprising of 231 en-suite rooms rented to post-graduate students. It required a system that offered assured electronic locks, built to serve the unique demands of student accommodation while ensuring the occupants safety and security. Crome Court's doors are fitted with Aperio® E100 online escutcheons. Students open doors with smart cards instead of keys, and UEA staff can also control doors from a web-based interface or mobile phone.

An intelligent access control solution is one of the most effective means of balancing this need for the right level of accessibility with creating a secure learning environment. UEA is just one of the sites that has benefited from a sophisticated access control solution, with many more looking set to follow its example. When designing modern buildings and facilities for the education sector, the need to implement a reliable access control solution looks set to become a top priority. ■



DOOR MONITOR

Simon Osborne, commercial leader at safety and security company Allegion offers solutions to school security

Timed Access

Access control solutions are now widely available in the door hardware market with a wide range of functionality. One of the most useful functions for schools, though, is the ability to permit entry during a designated period of time, and then lockdown those entrances automatically after that period of time has passed.

In effect, this means that when teachers and pupils are going in and out of schools during mornings, breaks and lunch times, entry points are opened automatically and locked to outsiders after.

Remote Lockdown Systems

One of the most difficult parts of being a school caretaker or facilities manager is locking down entry points, simply because of the sheer amount that there could be to a school.

To minimise the chances of unwanted intrusion, schools would benefit from having a central electronic remote locking system. Access control solutions can now be linked to

all doors within a building and locked at the touch of a button. Control can also be given to other users within the building, so that responsibility can be divided between teachers, maintenance staff and office staff, if need be.

Latchbolt Monitors

External security doors need to engage properly to be effective at stopping would-be intruders getting through. However, pupils often leave doors ajar or not latched fully, either because they haven't been taught to close the doors or, perhaps for younger children, they don't have the strength to close them.

A simple fix for this situation is to use latchbolt monitors. These work by sending a signal to a central monitoring station, giving confirmation of when the door is shut and secure.

Electronic Panic Exits

Panic exits have long been purely mechanical to allow users safe and secure exit from a building in a state of emergency and, combined with an outside access device, to provide a simple means of accessing the door externally. However, there are now electromechanical exit devices on the market that can integrate with electronic access control systems to allow monitored safe and secure access.



guild of
architectural
ironmongers

advancing architectural ironmongery



GAI RIBA Approved CPDs

The GAI have created four CPDs which have been approved by the Royal Institute of British Architects. As they are RIBA approved this means that architects will be able to receive double learning points for attending a presentation of this CPD. These CPDs are now available to GAI membership to purchase at a cost of £300 plus VAT each

Ironmongery and accessibility

This looks at legislation and standards including Equality Act, BS 8300:2009 as well as Approved Document M and the equivalents throughout the UK and Ireland. It also looks at BS 8300 compliant specification of product including door closers, automatic door operators, door furniture and hardware as well as access control products and handrail.

Specification of door hardware - an architect's guide.

This is based on the publication of the same name which is available in hard copy or to be downloaded from the GAI website. This Presentation is intended as a guide for architects on what architectural ironmongery is and how the process of correctly specifying these critical items come together.

Ironmongery for fire and escape doors:

This provides guidance for architects and building owners on the correct specification of ironmongery on fire and escape doors as well as the necessity of regular inspection and maintenance on these critical items.

The specifiers guide to access control

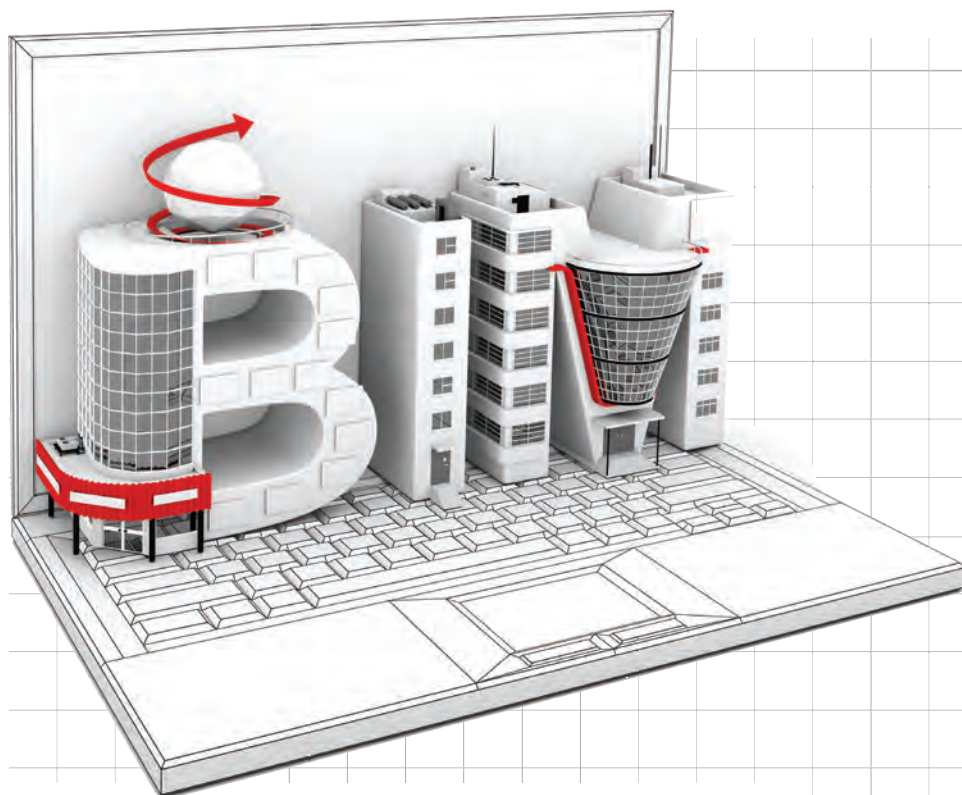
This looks at the definition and correct specification of electric locking and access control systems, including online, off line and virtual systems. It also looks at new product innovations.

For further details please contact **technical@gai.org.uk**

READY, SET, GO

The GAI has issued free product data templates to make it easier for members to be BIM Level 2 compliant.

Douglas Masterson explains.



The GAI has created a great benefit for members to assist them with compliance to BIM Level 2: a set of free downloadable BIM Product Data Templates (PDTs) to allow member companies to create their own Product Data Sheets (PDSs).

April 2016 was the official date on which the UK Government's BIM mandate came in to effect. This was when all centrally procured public sector projects would require the mandatory implementation of BIM Level 2.

Currently BIM may not have a major effect on the day-to-day activities of GAI members, but BIM and the Government mandate is not going away. It is therefore wise for businesses to consider how best to provide their information in a manner which is consistent with BIM.

High definition

Let's revisit the definition of BIM: BIM is the process of creating a rich digital computer model of a building project that can be used to design, fully analyse, build, manage,

maintain, refurbish and even demolish that building.

BIM refers to the creation and use of co-ordinated, internally consistent, computable information about a building project for design, construction and use. As a model its purpose is to co-ordinate data and drawing between disciplines in a 3D environment, and seek to bring order from information chaos. BIM is effectively the digitisation of construction as it takes many separate systems to one defined location and allows the data to be structured in such a way that it can be easily searched.

Show your work

There are several ways in which a manufacturer's product information can be communicated. One is through the use of BIM objects which includes 3D modelling, although this can be an expensive way of doing so.

Another method is through Product Data Sheets (PDSs) which are derived from Product Data Templates (PDTs). PDTs help generate information about a manufacturer's product and from this template a PDS is produced which can be made available by the manufacturer to anyone who requires it.

New GAI templates

The GAI, working closely with BIM4M2, established a working party in September 2015 to create a number of PDTs for the architectural ironmongery industry. We are now delighted to confirm that following the hard work and focus of this committed group of people the GAI will be releasing 35 templates as phase 1 of this exciting new member benefit.

The Working Group was made up of the following people to whom the GAI is most grateful for their time, effort and diligence in the creation of these PDTs:

// BIM is the process of creating a rich digital computer model of a building project that can be used to design, fully analyse, build, manage, maintain, refurbish and even demolish that building."

Douglas Masterson (chair): GAI
Andy Stolworthy: BIM4M2
Andy Matthews: HOPPE UK
Angus Grant: Carlisle Brass
Doug Law: Lorient Polyproducts Ltd
Franz Lorenschitz: Allgood PLC
Jeff Jones: Royde & Tucker
Neil Rule: Access2
Paul Barrows: ASSA Abloy
Paul Campbell: Carlisle Brass
Robin Darby: Exidor
Roy Buckingham: Abloy UK

The products covered in phase 1 are as per table right. The working party took the view that the first release of products should contain a wide cross section of products. It was also agreed that they should concentrate on providing PDTs for all main products which are covered by a relevant EN Standard.

There will be a second phase of PDTs of products (right below) which will be released in the first half of 2018.

How to use the templates

There will be a full set of instructions on the first page of each template. Each PDT contains eight sections which will have space for the following detail:

Manufacturer's Data. This section provides detail on the manufacturer as well as the product number, product range and any specific features on the product itself.

Construction Data. This provides space for the shape, the primary material the product contains and the finish or colour.

Application. This allows for the category of use where applicable from the relevant standard as well as information on suitability for fire doors and the door material it has been tested on.

Dimensional data. This is for essential information on all relevant

dimensions and product weight.

Performance data. This would include a link to the Declaration of Performance (DoP) where applicable, fire test evidence, guarantee period, corrosion resistance and any relevant third-party accreditation.

Electrical data – where applicable this should provide detail on battery, external power sources and voltage.
Sustainability. This should provide detail on compliance with EN 14001, show link to an Environmental Product Declaration (EPD) and state the country of manufacture.

Operation and Maintenance. This will allow a link to be posted to the relevant O&M data.

Once the relevant data has been saved then the PDT will become a PDS and it can then be saved and issued or even hosted on the manufacturer's website as a download.

The GAI will also be working alongside other trade associations including CAB, BPF and BWF on industry-wide PDTs covering fenestration products, as well as GGF on window hardware PDTs. PDTs on door automation products are also being developed through ADSA.

Don't delay

BIM is happening now and it is here to stay. It is likely that at some stage a key stakeholder in the construction process will ask for your BIM information. The GAI PDTs will now provide an industry-wide method for how this information can be presented in a consistent, well defined and structured way. ■

Download the revised and updated GAI Guide to BIM on the member's section of the GAI website or contact technical@gai.org.uk.

Number	Product	Phase 1 Complete
	Hanging devices	
1	Single axis hinges	x
2	Pivots	x
	Closing devices	
3	Mechanical controlled door closing devices	x
4	Door co-ordinators	x
5	Electromagnetic hold open/free swing devices	x
	Locking devices	
6	Locks and latches - Mechanical	x
7	Locks and latches - electromechanical	x
8	Mechanical Cylinders	x
9	Mechatronic Cylinders	x
10	Mechanical Digital Locks	x
11	Electric strikes	x
	Exit devices	
12	Mechanical panic exit devices	x
13	Mechanical emergency exit devices	x
	Door furniture	
14	Lever and knob furniture	x
15	Pull handles	x
16	Escutcheons	x
17	Bathroom turns and releases	x
18	Finger Plates	x
19	Kicking Plates	x
	Ancillaries	
20	Door Stops	x
21	Door catches	x
22	Easy Clean Sockets	x
23	Mechanical door bolts	x
24	Letterplates	x
25	Door Viewers	x
26	Door restrictors	x
27	Finger Protection devices	x
	Intumescent and acoustic products	
28	Intumescent fire/ fire and smoke seals	x
29	Acoustic seals	x
30	Intumescent ironmongery protection	x
31	Air transfer grilles	x
	Door systems	
32	Sliding and folding door systems	x
33	Pocket door systems	x
	Signage	
34	Bespoke signage	x
35	Signs and symbols	x

Number	Product	Phase 2
	Hanging Devices	
1	Multi axis hinges	x
	Closing devices	
2	Uncontrolled door closing devices	x
	Locking devices	
3	Locks and latches - Multipoint Mechanical	x
4	Locks and latches - Multipoint - Electronic	x
5	Electronic Cylinders	x
6	Electronic Digital Locks	x
7	Electro-magnetic locks (maglocks)	x
8	Solenoid bolts	x
	Exit devices	
9	Electro-mechanical panic exit devices	x
10	Electrically Controlled Exit Systems	x

NEW PRODUCTS »



ALLEGION CHECKS IN TO HOTELS

Allegion has launched a new smart key to the UK market designed to boost business for hotels.

The CISA BLE eKEY will allow guests to unlock their rooms by using enabled smartphones as mobile credentials. The new technology will also allow guests to control their stay, including booking the hotel and checking in and out, with the dedicated guest app [gestgid]®.

The CISA BLE eKEY also benefits hotels by encouraging direct booking, and therefore cost savings. It's suggested to reduce the dependency and cost of online booking agents, as well as improve the probability of repeat bookings.

This in turn provides higher margins for the hotelier and will increase revenue.

Partnering with digital sales firm, BHM Media Solutions GmbH, Allegion has designed a basic package that will allow guests to order room service, access directories and provide feedback through the [gestgid]® app. The more advanced packages will give the CISA BLE eKEY functionality, as well as opportunities for hotels to push notifications straight to the guests smartphones and alert them to special hotel offers.

» uk.allegion.com/uk

PUBLIC BUILDINGS TO GET NEW DOOR CLOSER TECHNOLOGY

HOPPE (UK) has released a new door closer range.

Designed to meet fire regulations without compromising on safety and security, the new Cam-Action range caters for power sizes 2 to 5 making it the ideal hardware solution for public buildings.

Door closers have a vital role when it comes to keeping building occupants safe in the event of a fire. The closer ensures that the door is closed fully into the frame, helping to prevent the spread of fire, smoke and other toxic gases.

The HOPPE (UK) Cam-Action range has been tested to BS EN 1634 Part 1, making it suitable for use on 30, 60 and 120 minute timber fire doors – the requirement in most public buildings. It also meets the fire safety requirements of Approved Document B.

Fire doors within public buildings can be difficult to open for some building users but the new Cam-Action closer is designed with a low opening force, enabling everyone to move around the building with ease. It also meets the accessibility recommendations of BS8300 and Approved Document M.

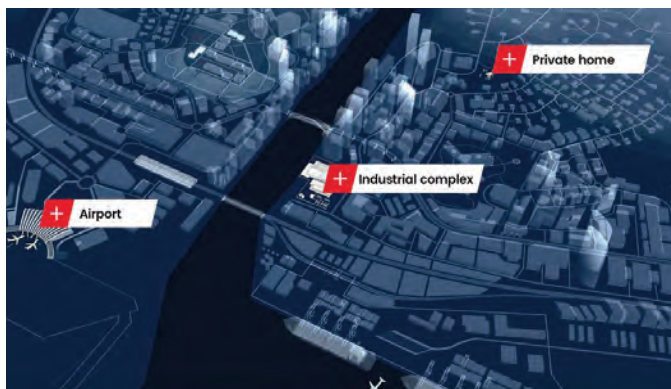
The surface mounted slide track puts the closer at less risk of



vandalism or accidental breakage, a common problem with projecting armsets. Projecting armsets, also known as scissor arms, can become disengaged when subjected to these forms of abuse and stop the door from closing properly into the frame creating a major fire hazard.

» www.hoppe.com/gb/en//home

DORMAKABA REVOLUTIONISES PRODUCT GUIDE

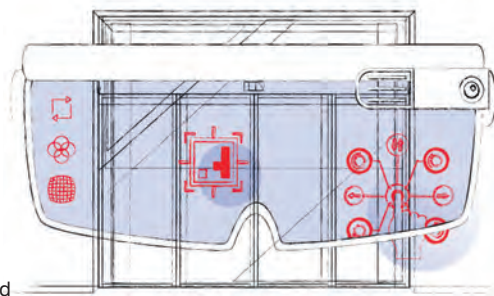


dormakaba has launched its Red Dot Design Award-winning 360° City app. The innovative tool allows users to explore the company's extensive portfolio within a virtual world

that includes an airport, industrial complex and private residences. The app can be used on a smartphone or tablet in 2D, 3D and even utilised through a VR headset.

The app, which can be downloaded for free from the Apple App Store or Google Play Store, provides a virtual world in which the specifier or end user can experience how dormakaba's products can be used within a variety of situations.

Users of the app in 2D or 3D will be able to take a pre-defined route through the city and see the dormakaba products in use. Alternatively, products can be explored in detail using the product browser. The 3D experience also provides the user with short films, images and data sheets.



Additionally, the app can also be used in VR mode on a smartphone in conjunction with a headset. In VR mode, users have the opportunity to immerse themselves fully in dormakaba's 360° city, exploring detailed inner workings of a range of products.

» www.dormakaba.com/360-city



GEZE UK GETS TOP MARKS FOR EDUCATION

GEZE UK has issued a new project portfolio for the education sector.

The brochure illustrates how various automatic and manual door control solutions and window technology systems have been applied in a range of schools, colleges and universities to meet specific purposes and the needs of staff and students.

The series of case studies show stylish entrances and practical solutions including the City of Glasgow College where showcase entrances were installed at its City Campus, how demands of functionality, efficiency and

durability were met at Swansea University's Bay Campus and how overhead door closers were installed at Manchester Metropolitan University. It also demonstrates how accessibility was key in its involvement with Treloar School and College in Hampshire, which caters for students with physical disabilities and learning difficulties, as well as an example of how natural light and ventilation was a key consideration at a STEM (science, technology, engineering and maths) building, at Thorp Academy on Tyneside, which was fitted with GEZE manual window openers and closers.

A copy of the Education Project Portfolio is available by emailing info.uk@geze.com or from the download section of the company's website.

www.geze.com

NEW PATINAS OFFER FINISHING TOUCH



Croft has launched four new finishes to complement its architectural hardware range targeting high-end residential and commercial projects.

The launch of the Matte Black Bronze, Smoked Brass, Autumn

Bronze and Imitation Bronze Unlacquered, further enhances its range of handcrafted door and window furniture.

Paul Clifford, company director commented: "The addition of our new finishes is a result of our team listening to what our industry is saying to us. We know that achieving that 'perfect finish' is critical to the success of a project. With the release of our new finishes, Croft offers all the elegance and versatility required, whether striving for a modern or vintage look and feel."

Croft has released a new finishes brochure to showcase the full collection.

www.croft.co.uk/finishes.html

GEORGE BOYD LAUNCHES NEW WEBSITE



Architectural ironmongery specialist, George Boyd, has created a new transactional website.

George Boyd stocks over 5,000 fully compliant commercial and residential ironmongery products in modern and traditional designs which meet BS and EN standards,

as well as fire ratings. The range is complemented with power tools, sealants, adhesives and fixings available with multiple delivery options.

The new website features a range of tools to help customers shop smarter, including a product comparison tool gives, a 'My Jobs' tool to save potential purchases to be bought at a later date and a wide variety of delivery and collection options including next day.

www.george-boyd.co.uk

EXIDOR LAUNCHES DOOR CLOSER DESIGNED FOR CARE SECTOR

Exidor's Guardian electromagnetic door closer is an innovative advancement from traditional swing free closers and has been designed to take into consideration the specific needs of the Care Home environment. It has two unique features aimed to improve both the physical safety of residents and staff as well as the passive fire safety of the care facility itself.

The first is anti-slam finger protection: the swing free mode of a closer can allow a door to slam shut. Whether this is accidental, deliberate or just caused by a draught, it poses a real risk to frail residents and care home workers alike. The Guardian closer has been specifically developed with an anti-slam function which controls and slows the motion of the door.

The second feature is drift resistance: unbalanced doors



naturally swing open or closed, or doors can swing with a draught. This can result in residents wedging doors open and invalidating them as fire doors. Exidor's Guardian closer offers a low level control on the door, which stops it from drifting from its open position, at the same time as allowing it to operate freely to the user.

As they are linked to the fire alarm system, they only close when you need them to.

www.exidor.co.uk

NEW FIRE SAFETY RANGE FROM LAIDLAW



Firemongery™ is a new fully certified range of ironmongery, fire door controls, integrated doorsets and automatic door controls

form Laidlaw. All products within the range are fully tested and CE marked where applicable. In addition, many are also Certifire approved which is an internationally respected mark of fire safety.

Laidlaw has launched the range to assist in the selection of the right products for fire door compliance.

Download the Firemongery™ brochure at the address below.

laidlawblog.co.uk

CREATIVE QUARTER

Plans have been unveiled for London's first purpose-built design district



Eight architecture firms have been given the brief to create 16 buildings for a purpose-built design district at the heart of the new Greenwich Peninsula development in London.

The new one-hectare design district will provide a permanent base for over 1,800 of London's creatives across a range of affordable workspaces.

The eight architecture studios are 6a Architects, Mole, Architecture 00, Barrozi Veiga, SelgasCano, Assemblage, Adam Khan Architects and David Kohn Architects.

Each firm was asked to design a pair of buildings independently

and 'blind' from each other in order to create a "provocative diversity of colour and form".

The buildings will be set around a series of courtyards and a central public square. The district is to be fully pedestrianised and a transparent market hall will sit at its heart.

'Open house' workshops, rooftop terraces and a basketball court will be open to visitors, while retail design studios will house a rotating showcase of work created by the local designers.

The creation of the design district is the latest phase in Knight Dragon's 20-year development of Greenwich Peninsula – one of the largest regeneration projects in London. It will be delivered in a single phase and be open to its first tenants by early 2020.

As well as a new design district, the £8.4bn Greenwich Peninsula development, which is masterplanned by British architecture firm Allies and Morrison, is to include 15,720 homes, a film studio, a new mixed-use tube station by Santiago Calatrava, schools, offices and healthcare services. ■



// The new one-hectare design district will provide a permanent base for over 1,800 of London's creatives across a range of affordable workspaces"

MORE DATA LESS NOISE



When it comes to acoustics, we combine creative flair with state-of-the-art testing and expertise. The result — a comprehensive range of sealing systems that you know will perform exactly as you need them to in a real door assembly.

For clear performance data, our acoustic app and details of our dedicated testing services, visit our website.



lorientuk.com

BE SMART UPGRADE

DID YOU KNOW?

Codelocks Smart Locks can be easily retrofitted to your existing door lock prep. Yes, it's really that simple.

GET SMART.

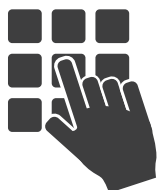
An easy upgrade will transform your door access and allow a greater level of control. The locks offer flexibility and convenience; program, operate and manage locks directly via the keypad, or by downloading the K3 Connect App* on any Bluetooth compatible smartphone, generate and send entry codes for easy access and issue smart cards for alternative entry.

STILL SIMPLE. STILL STANDALONE.

The locks are smart, but they still perform and operate at entry level. Simple access control with a code. The locks offer a full range of benefits that put you in control allowing you to choose the level of usage that is required for your specific needs and application.

*The App is available on the Apple App Store for Apple devices or Google Play™ for Android™ devices.

SMART



CODE.



CARD.



PHONE.

+44 (0) 1635 239645
www.codelocks.com
sales@codelocks.com



CODELOCKS
control + convenience

AMERICAS • UNITED KINGDOM • EUROPE • MIDDLE EAST & AFRICA • ASIA PACIFIC