



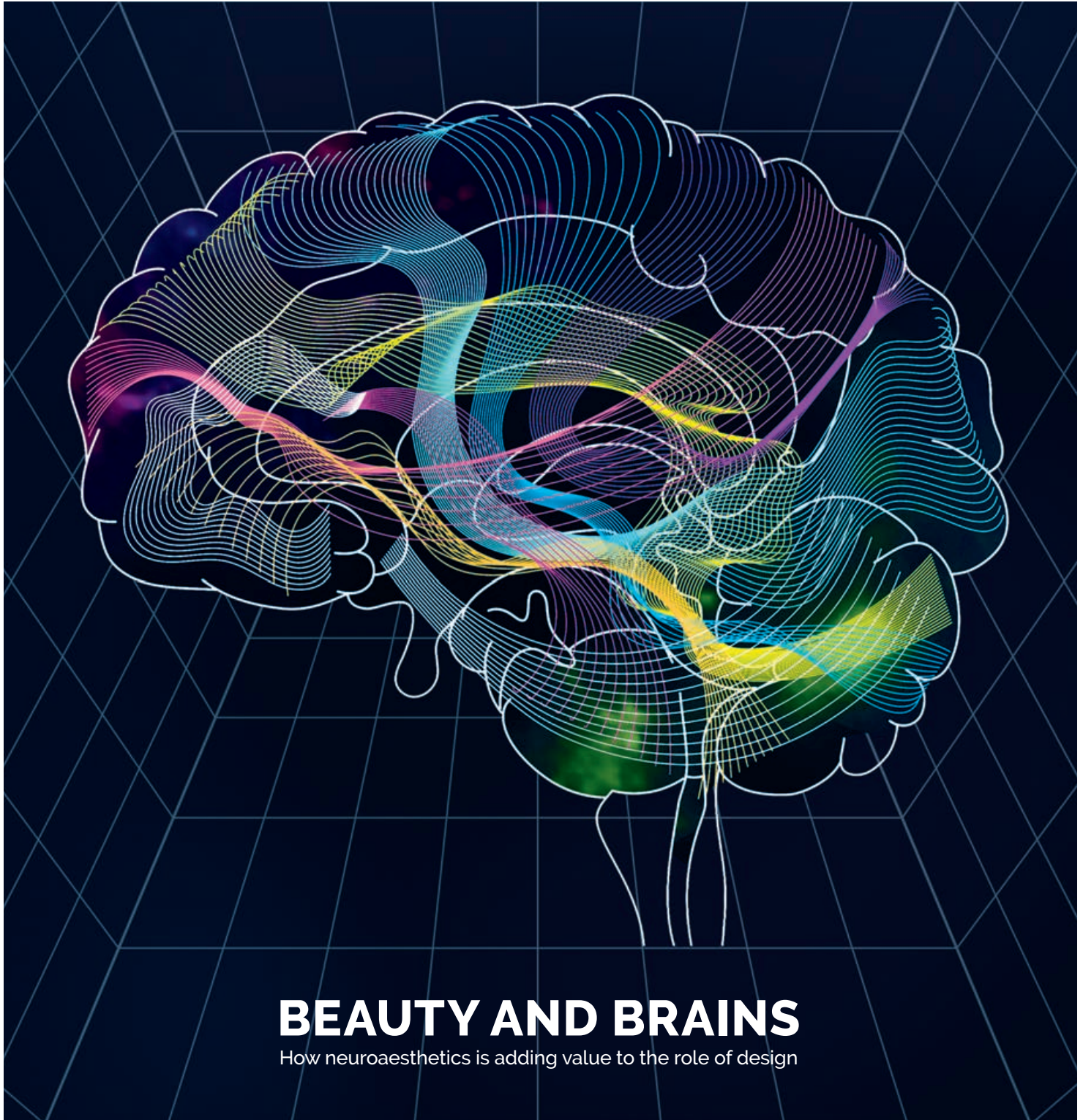
Architectural  
Ironmongery  
Journal

AUTUMN 2024



INSIDE

- Rhodes House
- Vanquish interview
- Digital Product Passports



# BEAUTY AND BRAINS

How neuroaesthetics is adding value to the role of design

Emerald Ward



TIMBER FIRE DOORS  
An ASSA ABLOY Group Company

# Manufactured, Tested, Specified, Certified

Sunray is the specifiers choice for **Timber Fire Doors** and **passive Fire Protection**. Our comprehensive Timber Door Range provides Fire Integrity from **FD30** to **FD120** and Security Rating of **SR1 & SR2** with Fire Secure.

All Doors are bespoke enabling specialist hardware, vision panels, overpanels and of course colours and finishes.

We operate in numerous sectors and provide performance specifications to meet project requirement.

We are the  
specifier's choice for:



COMMERCIAL



HOTEL / LEISURE



SOCIAL HOUSING



HEALTHCARE

For more details, call our specialised team to discuss your particular project on

# 01233 639039

[sales@sunraytimberdoordivision.co.uk](mailto:sales@sunraytimberdoordivision.co.uk)  
[www.sunraytimberdoors.co.uk](http://www.sunraytimberdoors.co.uk)





10



08



26



23



16

**CONTENTS** AUTUMN 2024

**NEWS AND VIEWS**

- 04 Digest
- 06 Empowering the end user
- 28 Community: GAI news, including the new GAI chief executive

**FEATURES**

- 08 What I specified: a veterinary practice
- 10 Award-winning Rhodes House
- 12 Ready for digital product passports?
- 16 Cover story: the role of neuroaesthetics in design and specification
- 23 Interview: MD of Vanquish Hardware

**TECHNICAL**

- 26 Dear GAI... how is the GAI using its influence to affect change?

**BACK DOOR**

- 34 The door that spawned the phrase "to chance your arm"

**EDITORIAL PANEL:**

Kaz Spiewakowski  
President  
Email: [president@gai.org.uk](mailto:president@gai.org.uk)

Rachael Bliss  
Chief executive  
Email: [rachael.bliss@gai.org.uk](mailto:rachael.bliss@gai.org.uk)

Marc Sanderson  
Head of marketing  
Email: [marc.sanderson@gai.org.uk](mailto:marc.sanderson@gai.org.uk)

Douglas Masterson  
Technical manager  
Tel: +44 (0) 7469 141657  
Email: [douglas.masterson@gai.org.uk](mailto:douglas.masterson@gai.org.uk)

**DESIGN AND PRODUCTION:**

Atom Publishing  
Tel: +44 (0) 20 7490 5595  
[www.atompublishing.co.uk](http://www.atompublishing.co.uk)

**EDITOR:**

Nicky Roger  
Tel: +44 (0) 7704 336835  
Email: [nicky.roger@atompublishing.co.uk](mailto:nicky.roger@atompublishing.co.uk)

**ADVERTISING MANAGER**

David Smith  
Tel: +44 (0) 20 7490 5595  
Email: [david.smith@atompublishing.co.uk](mailto:david.smith@atompublishing.co.uk)

**ART EDITOR:**

Heather Rugeley



aij is published by the Guild of Architectural Ironmongers. Ironmongers' Hall, Shaftesbury Place, London EC2Y 8AA Telephone +44 (0)20 3370 8540 Website: [gai.org.uk](http://gai.org.uk)

Although this magazine is the official publication of the Guild of Architectural Ironmongers, claims and opinions expressed by contributors and advertisers do not necessarily reflect the official views of the GAI. Copyright the Guild of Architectural Ironmongers 2007 ISSN 0959-986x

Updates  
Projects  
Standards  
Events

# Digest

**ABOVE AND BELOW:** The Anemone Knob designed by US jeweller Pamela Love for the debut collection from Petra



## US design name launches boutique collection

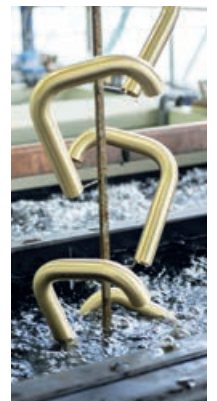
A new name in door hardware was unveiled at this year's New York Design Week. Monica Kehmsurov, author, editor, creative consultant and founder of design magazine Sight Unseen, has ventured into boutique hardware with Petra, an online collection by leading designers.

Inspired by the hardware Kehmsurov has seen on her travels Petra offers unique hardware ranging from cabinet knobs, drawer pulls, door handles, switch plates, appliance handles, curtain tiebacks, towel bars, and more as well as exclusive, commissioned works by independent designers. The debut collection of handmade fixtures was designed by 35 different contributors with several statement pieces such as the NYC jewellery designer Pamela Love's collection of intricate figural hardware creations. The Anemone Knob is hand-carved in wax, cast in bronze, and hand-polished.

[petrahardware.com](http://petrahardware.com)

### LUXURY HARDWARE BRANDS TO SHOW AT INTERIORS EVENT

The UK's interior design show Decorex returns to Olympia on 6-9 October. Interior designers, buyers and specifiers will gather for product launches, demonstrations and a talks programme. Over 280 brands will showcase their newest products including Armac Martin, Corston Architectural Detail, Croft Architectural Hardware, Frank Allart, Hendel & Hendel, Turnstyle Designs, and Samuel Heath & Sons who will showcase its new amber brass finish (pictured). Buy tickets at [decorex.com](http://decorex.com)



**ABOVE:** Samuel Heath will exhibit at Decorex

# UK Government announces CE/UKCA Marking and BS 476 changes

The UK Government's Minister for Building Safety and Homelessness has announced an extension of the recognition of CE marking for construction products in Great Britain - this will not impact Northern Ireland.

This extension, and the longer-term future of CE/UKCA marking, is conditional on a commitment from the government to system-wide reform of the construction products regulatory regime.

The key points are:

- CE marking will continue to be accepted beyond 30 June 2025 in Great Britain.
- The government has committed to system-wide construction product regulatory reform.
- UKCA marking will remain a valid and accepted regulatory mark.
- The government will explore the long-term future of CE/UKCA marking as part of this regulatory reform.

Any subsequent changes to the recognition of CE marking would be subject to a minimum two-year transitional period.

The government will engage with UK Conformity Assessment Bodies, the UK Accreditation Service, and the wider industry to strengthen the conformity assessment market.

The government is also completing the withdrawal of the National Classes BS 476 fire testing standards, ending a long period of dual specification in favour of the EN 1634 European standard in Approved Document B (England).

This implements the recommendation, made in the Hackitt Report, for a clearer, more transparent and effective testing regime. The government has stated there will be a transition period of five years for fire resistance (which will impact fire doors) to facilitate a smooth transition

to the European standard, minimising supply chain disruption.

These transitional arrangements will also ensure that products already tested to the BS 476 standard (as well as assessments to this standard) can continue to be used during the transition period and the necessary retesting can be organised. In addition, assessments beyond 2029, based on EN 1634 testing for products to be fitted to internal doorsets and internal and external door assemblies may still be used, but further clarification on this is required.

The GAI has been lobbying the UK Government in recent years to provide clarity on CE marking dates following multiple acceptability timeline amendments. It has also been collaborating on any changes to BS 476 in order to ensure that the corresponding assessments would have a long transition date.

**BELOW:** The government has parked the end of CE Marking pending widespread reform of construction products regulation



**ABOVE:** Phase 2 of the Park Hill redevelopment is in the running for this year's Stirling Prize

## Six line up for Stirling

The Royal Institute of British Architects has unveiled its shortlist for this year's Stirling Prize. These are:

- Phase 2 of the Park Hill estate regeneration in Sheffield by Mikhail Riches
- Wraxall Yard holiday accommodation in Dorset by Clementine Blakemore Architects
- Chowdry Walk social housing by AL-Jawad Pike
- The Elizabeth Line infrastructure by Grimshaw, Maynard, Equation and Atkins
- National Portrait Gallery with Purcell
- King's Cross Masterplan by Allies and Morrison and Porphyrrios Associates.

RIBA president Muiyiwa Oki praised the shortlisted projects "for placing regeneration and restoration front and centre".

The RIBA Stirling Prize is bestowed annually to the architect behind the building considered as the most significant of the year. The shortlist is selected from the winners of the RIBA National Awards, revealed earlier this year. The winner will be announced on 16 October.



# How good is your handover?

**Brian Ferguson RegAI** on why fire door safety must go beyond compliance

**In the realm of building safety, the role** of fire doors is paramount: they are not just functional elements but critical safeguards that protect lives and property. However, the question we must all ask is: are we doing enough to ensure that end-users can effectively manage their fire door safety?

A fire door's effectiveness during an emergency depends on the seamless integration of its components: the door leaf, frame, seals, hardware, glazing system, and ironmongery. The provision of clear and comprehensive specifications for each component used in fire door design is critical, yet they often fail to reach the individuals responsible for maintenance in the end-user environment.

Designers, specifiers, manufacturers, and fabricators should list every replaceable component with detailed sourcing information, including manufacturers' part

**BELOW:** Providing detailed information to end-users is crucial



codes. Without this, facilities managers and estates teams struggle to maintain compliance, compromising safety.

Are we, as an industry, adequately bridging this gap? The project handover stage is a pivotal moment for fire safety in UK facilities. Providing comprehensive information at this stage is not just about compliance but about empowering end-users. For fire doors, essential handover information should include detailed specifications of each component used in the door design, manufacturers' part codes, and clear references to where the components can be sourced. However, even when this information is provided, it is often buried in O&M manuals, inaccessible to those who need it most.

Consider your current practices: are the specifications you provide detailed and clear enough to be useful post-handover? Do they include all the necessary information to

maintain the fire door's certified status? Are you engaging with end-users to ensure they understand and can act on this information?

BS 8644-1:2022 offers a framework for managing fire safety information digitally throughout an asset's lifecycle. Technologies like BIM and cloud-based asset management systems can revolutionise fire door lifecycle management, and significant progress has been made with the development of Product Data Templates (PDTs) for door systems, which standardise essential product specification data formats, ensuring consistency and traceability.

Ensuring that every replacement part meets the original specifications is crucial for maintaining the fire door's effectiveness and compliance. Replacing fire door components with exact matches can and should indefinitely extend a door's lifecycle without the need for full system replacement.

As designers, specifiers, manufacturers, and fabricators, we have a duty to impart our knowledge and expertise to end-users to help them manage lifecycle compliance. This not only meets regulatory requirements but ensures the highest safety standards in our built environment. ♦

**Brian Ferguson is the owner and managing director of FD Fire Door - Compliance Management Consultants.**  
[www.fdfiredoor.co.uk](http://www.fdfiredoor.co.uk)

**FRELAN** THE NAME OF QUALITY  
HARDWARE **ARCHITECTURAL HARDWARE**

COMING SOON

Our new range of mortice knob furniture  
- Four distinct styles  
- Five great finishes



Matt  
Black

Antique  
Brass

Satin  
Brass

Satin  
Nickel

Polished  
Chrome

For more details, including launch date, please visit our website



[www.frelanhardware.co.uk](http://www.frelanhardware.co.uk)

# What I specified for...

## Newton Clarke Veterinary Surgeons

**Dan Hawkins**  
RegAI,  
Door Controls  
Direct



**A pastoral, countryside veterinary** surgery may invoke thoughts of tweed, dry stone walls, and James Herriot but our specification for Newton Clarke was far from the stereotypical 1930s Yorkshire aesthetic.

Nestled on the edge of Sherborne, a 7th century town in North Dorset, this vet's practice had to fit seamlessly into the rural idyll of its ancient surroundings. With a wealth of choices for more traditional finishes and designs this was, on the surface, no issue.

Working with the client and design management company there was an

outline for us to work with. However, when there is an existing branch in an urban setting less than six kilometres away, the specification had to take a different turn.

So, how to deliver cohesion with its local sister branch while ensuring a definite, separate look and feel, without compromising functionality and compliance? The decision was made to split finishes and designs between the front of house and back of house.

Speaking with the staff on a recent site visit they love the antique brass front of house hardware with the contrasting black doors. And with detail in mind, matching fire door signage and cylinders. You can't ignore the visual impact this pairing has.

Back of house was the more-expected-for-a-vets satin stainless steel finish hardware. DIN standard lockcases make an appearance throughout with finish to match



**ABOVE:** The Dorset practice

**BELOW:** Antique brass hardware contrasts with black doors

"How to deliver cohesion with its local sister without compromising functionality and compliance?"

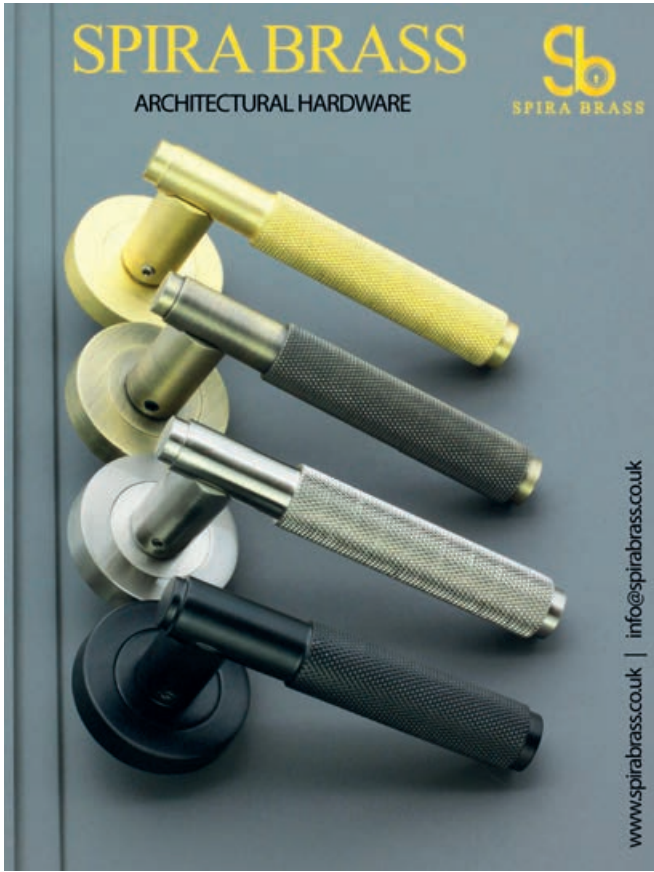
**DAN HAWKINS**

each area. This was topped off with the master key system. Access2 euro profile cylinders were an extension to the system at the existing, sister branch, plus accommodating expansion to include future sites.

With high levels of inclusion of all parties throughout the process of specification and supply, it was a straightforward project to work through, with swift progress on site, and no snagging with any element of the door hardware. The end result? A boutique hotel design and feel for a functional, clinical space, presenting a peaceful, calming atmosphere to pets, owners, and employees alike. ♦







**THE ALL-NEW**  
**Architectural Ironmongery Specifier Resource Book**

Your guide to the **projects, companies** and **professionals** setting the standard in contemporary architectural ironmongery.

**Architectural Ironmongery Specifier Resource Book 2024**

This free 78-page guide from the Guild of Architectural Ironmongers (GAI) is an unmissable source of information and reference.

Explore best practice in architectural ironmongery with the winning entries from this year's **RIBA/GAI Specification Awards**. Read the latest updates on professional competence, skills and industry standards. And find the very best companies and **Registered Professionals** to support your project with a complete **GAI member directory**.

Just one of the free resources available on the GAI website for architects, designers and specifiers throughout the construction sector.

Get your copy today at [www.gai.org.uk/SPECIFIER](http://www.gai.org.uk/SPECIFIER)

**Guild of Architectural Ironmongers**

**SIMONSWERK**

**TECTUS**  
The completely concealed hinge system

**It all hinges on excellence.**

[www.simonswerk.co.uk](http://www.simonswerk.co.uk)

**certifire**

# Secondary modern

Rhodes House, a winner at the GAI AI Specification Awards 2024, posed the challenge of making a contemporary function work in a heritage setting



## Designed by Sir Herbert Baker and

completed in 1929, Rhodes House is located in the centre of historic Oxford. Set within extensive gardens, the building is the historic headquarters of the Rhodes Trust, an educational charity which oversees the Rhodes Scholarships at the University of Oxford and several other global fellowship programmes. In 2020 Stanton Williams Architects and Beard Construction began transforming the house and its gardens into a £26m construction project, with hardware specification from 3v. The work would see the Grade II-listed building extended and restructured to create three new basements housing a 300-capacity, state-of-the-art conference centre, new guest bedrooms and new office spaces.

## Respectful interventions

Stanton Williams's scheme has transformed Rhodes House and gardens, with significant but respectful interventions that complement Herbert Baker's architecture, while doubling its usable space and substantially improving its environmental performance. The project has carefully restored the 1920s building and its historic gardens and reorganised the site to establish clear circulation routes and zones, with the new conference facilities in the centre; residential uses to the east; and new staff and scholar working accommodation to the west. The sensitive reconfiguration of the

“This is much more than a simple education project. It really tested the skill of the ironmonger”

**DOUGLAS MASTERSON,  
CHAIR OF JUDGING PANEL**

LEFT: Rhodes House's imposing entrance



**ABOVE:** Guest bedrooms nestled at lower level

lodge buildings and ancillary spaces to the north of the site restored the symmetry of the main façade; while the newly crafted interior spaces engage with the gardens on multiple levels to draw natural daylight and fresh air into the building and enhance wellbeing.

The new 300-seat Conference Hall and adjacent Foyer were created by converting existing restricted archive spaces beneath the House's main rooms and gardens. The archive spaces were not included in Baker's original design and were part of a series of alterations carried out in the 1950s. In the new Conference Hall, a new vaulted roof provides a generosity of scale and flexibility for a variety of convenings as well as opening up views to the gardens beyond.

Whereas the access to the archive spaces was originally tucked away from the main route, the Conference Hall and Foyer are now entered via an elegant new stone staircase created in the centre of the Rotunda – Baker's spectacular main entrance to Rhodes House. The new staircase leads delegates directly into the new Foyer below, where newly glazed existing lightwells bring daylight and natural ventilation to the reconfigured lower floors, while also acting as informal breakout spaces as well as display areas for public art.

In the West Garden, a new 50-seat glazed Pavilion provides a tranquil place for Scholars and the public to meet.

The East Wing has been returned to its original residential use, providing 21 ensuite bedrooms for conference delegates. Adjacent to the East Wing, a new lower ground Residential Courtyard, discreetly set within the East Garden, provides 16 new guest bedrooms. The rooms have glazed front openings to maximise natural light and are highly insulated and earth sheltered, with the gardens reinstated above. A new Garden Room opens out onto the courtyard below and a newly landscaped part of the garden, providing additional amenities for staff.

#### **Ironmongery brief**

"This project has been about acknowledging and transcending history to unlock Rhodes House's potential to fully support the Trust's strategic vision," says Paul Williams OBE, principal director, Stanton Williams. "In preserving and enhancing their historic premises in the heart of Oxford the project has avoided the need for an entirely new building."

The ironmongery brief from Stanton Williams was to preserve the character

and features within the original house while choosing contrasting but complementary products for the new contemporary extension.

3v worked in partnership with Stanton Williams and Beard Construction to develop a scheme to work with both the old and new elements of the building using a mixture of antique brass for refurbished areas and stainless steel for new accommodation. John Holmes, managing director of 3v said: "We also undertook an extensive review of all existing doors and hardware and upgraded hinges, closers and signage to meet current UK fire regulations. Our products work seamlessly with the architects design aspirations helping to create a wonderful collaboration of old and new."

Rhodes House scooped the win in the Hospitality/Education category at the 2024 GAI/RIBA Specification Awards. Chair of the judging panel, Douglas Masterson, commented: "This is much more than a simple education project. It involved many different finishes, different functions and really tested the skill of the ironmonger. It was quite simply a beautiful project and the specification of the ironmongery more than met the brief." ♦

**BELOW:** The new staircase and hardware reflecting the collaboration of old and new





# Getting a green card

Dr. Kai Oberste-Ufer shines a light on digital passports

**The Digital Product Passport (DPP) is a** buzzword that appears more and more frequently in the context of construction products and sustainability. Although it is becoming an important component of how product data will be handled in the future, the term is still associated with a great deal of uncertainty.

## What is a DPP and what are the benefits?

The DPP is one of many initiatives by the EU to create a digital, sustainable and competitive economy. It aims at enhancing sustainability, transparency, and traceability in product supply chains. The core objective of the DPP is to provide comprehensive and accessible information about products throughout their lifecycle. The DPP covers all products: from consumer goods to construction material and door hardware.

The framework definition of the DPP is currently developed within CEN-CENELEC Joint Technical Committee 24 (JTC 24).

The benefits of a DPP are different for various stakeholders along the value chain. At the top level, a DPP will make sustainable

information about products available and accessible and help with reaching the goal of a green circular economy. It will help specifiers to get reliable product information when they need it and thus make decision processes more efficient and transparent. It also makes products traceable and offers new opportunities for manufacturers and retailers to provide additional services and add customer value.

## Where does it come from?

The concept of the DPP emerged from the EU's increasing focus on sustainable development and circular economy principles. It was formalised in the context of the European Green Deal and the Circular Economy Action Plan.

**“It will help specifiers to get reliable product information”**

**DR KAI OBERSTE-UFER**

The DPP is explicitly mentioned in the “Ecodesign for Sustainable Products Regulation (ESPR)” published in 2022. The idea is to use digital technology to ensure that all stakeholders in the supply chain have access to the same information.

The Revision of the Construction Products Regulation (REFIT) was also adopted in 2022, incorporating the idea of a DPP and making it an integral part of the new regulation. The focus on sustainability of the ESPR is extended by the performance criteria as well as information regarding usage, maintenance and traceability. In addition, data regarding conformity to standards and regulations has been added.

## What is the DPP System?

There will not be one DPP that fits all industries. Since the DPP covers many, and each industry has its special requirements, established data structures and standards, the currently developed DPP Standard just defines the requirements, an industry-specific implementation must fulfill.

DPPs must be interoperable with each other, long-lasting (be accessible, even if ▶



# EUROSPEC

Galaxy & Arrow Lever & Accessories

**Precision in  
every turn!**

**Made from  
Grade 304  
Stainless Steel**

**Discover  
Galaxy & Arrow**

Available in:  
Matt Black, Satin PVD  
and Satin Stainless Steel  
Knurled and Lines designs



**BROWSE OUR  
WEBSITE**

a company runs out of business), secure and privacy-compliant, traceable, machine-readable, and based on open technical standards. In addition, a DPP must include a Data Carrier (e.g. a QR-Code or RFID-Tag which is physically added to the product to make the data accessible by the user) and the DPP data must be stored in a secure and reliable way. The DPP contains public and private data and demands a security system to ensure trusted access to the data.

How each Industry will adopt the requirements is not part of the regulation. This will be set in 'Delegate Acts'- special standards close to the individual product sector and industry. The industry specific acts will also define what data (properties) should be included in the specific DPP and how a suitable data structure and format looks like.

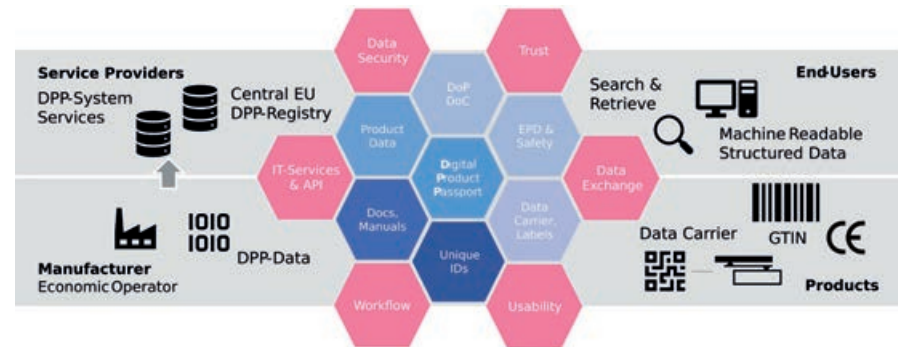
For distribution, there will be a central DPP-Registry. Users can 'ask' the registry about a certain product and get information where the actual DPP could be found. Where the DPP is stored at the end is not decided. Several options are being discussed currently including central storage, distributed storage in manufacturer specific databases or some mixture of both.

### What data needs to be included?

Although the data required for a DPP for construction products is not specified yet, a few information categories can already be named.

**"DPP represents a shift towards sustainable product lifecycle. It will be an unavoidable part of the digital future"**

**DR KAI OBERSTE-UFER**



- General product information, instructions for use and safety information
- Technical documentation
- Declaration of performance and conformity
- Labels (e.g. energy ratings)
- Manufacturer and products identification (e.g. GTIN)

The content requirements are closely related to the revised Construction Products Regulation. It will also be a reliable source for product information for planners and specifiers in early stages of design.

### How does the timeline look?

The definition and rollout of the DPP follows a phased approach:

**2020-2022:** Initial research and pilot projects to test the feasibility and impact of DPPs.

**2023-2024:** Development of legislative frameworks and technical standards.

**2025:** Expected harmonized Standard for DPP by JTC 24

**2026 onwards:** Gradual expansion to cover a broader range of products.

**2027:** DPP will be mandatory for batteries, fashion/textiles, electronics, plastics and chemicals.

For construction products, its expected that the process of definition of required DPP data will not start before 2027. A basic set of LCA properties could be defined from 2028, the full set not before 2031.

### What do I have to do?

The most important message: don't panic! Although DPP is heavily discussed currently, for building materials, no concrete and

specific requirements have been defined and there is no pressure currently to change anything in the way we work. But it must also be clear, that the DPP represents a pivotal shift towards more sustainable and transparent product lifecycle management. It will be an unavoidable part of the digital future. In order for manufacturers to be prepared a few actions can already be taken:

- Check your data management. Establish a robust system for collecting, storing, and sharing detailed product data. Be prepared to deliver all data in one format for one product.

- Be compliant. Ensure all data complies with EU regulations on transparency, security, and sustainability.

- Use your network. Use professional organisations like the GAI and engage with partners to stay up to date.

- Identify chances and risks. Be aware the digital transformation will also have an impact on your business. Identify what opportunities and risks this will bring to your business.

By adopting these measures, manufacturers will be prepared to act when the DPP becomes mandatory. It's too early to take any specific actions but be prepared and see the DPP as an opportunity, not a threat. ♦

An online quiz based on this feature is available on the GAI learning Hub.

Completion of this quiz is worth one CPD point. <https://learninghub.gai.org.uk/totara/dashboard/index.php>

**Dr. Kai Oberste-Ufer is head of AEC planning tool & configurators at dormakaba.**



**INSTINCT  
HARDWARE**

# Bespoke, beautiful and built to last.

For commercial ironmongery,  
you won't get better than Instinct.

We manufacture right here in the UK to the highest standards. Using the best modern manufacturing techniques alongside traditional methods, each individual piece of our ironmongery is inspected several times before it gets sent to you.

Our products are made from the highest marine-grade 316 stainless steel and come with a 25 year guarantee. When it comes to selecting the right ironmongery...

**TRUST YOUR INSTINCT.**



An ISO9001:2015 & ISO14001:2015 registered company



Call us on  
**0121 459 2358**  
[instincthardware.co.uk](http://instincthardware.co.uk)

# How does that make you feel?

Neuroaesthetics is bringing scientific evidence to how humans respond to design. **Nicky Roger** explores its impact for specifiers

**Neuroaesthetics is the new kid on the design block.** It's an interdisciplinary field that merges neuroscience with the study of aesthetics. Driven by wellness trends, it explores the idea that spaces can be more than functional; they can have a positive and measurable emotional impact.

Neuroaesthetics aims to understand how the brain perceives, processes, and responds to art and beauty, and how these processes are connected to emotions, cognition, and behaviour. For interior designers and architects it's helping them create spaces that are not only visually appealing but that enhance wellbeing, productivity, and overall quality of life.

Neuroaesthetic studies have informed design in spaces such as hospitals, schools and community spaces where healing and focus are essential. In the workplace companies are using neuroaesthetic insights to design offices that boost creativity and productivity and homes are being designed to enhance well-being using neuroaesthetic principles.

When you consider that people in developed countries spend over 90% of their time in built environments, and according

to a 2023 UK survey, 73% of people believe the way buildings look impacts their mental health the focus on how spaces make people feel is likely to intensify.

Earlier this year a study on neuroaesthetics explored the potential for interior spaces. 'Neuroaesthetics – Design for the Mind' was researched and developed by neuroaesthetics studio Kinda Studios and created in partnership with German door hardware firm FSB. The study collates insights across science, technology, and the arts, offers four pillars to shape design

**“In architecture and design the focus has been on functionality. The question of how people feel in those spaces has not been given a lot of priority”**

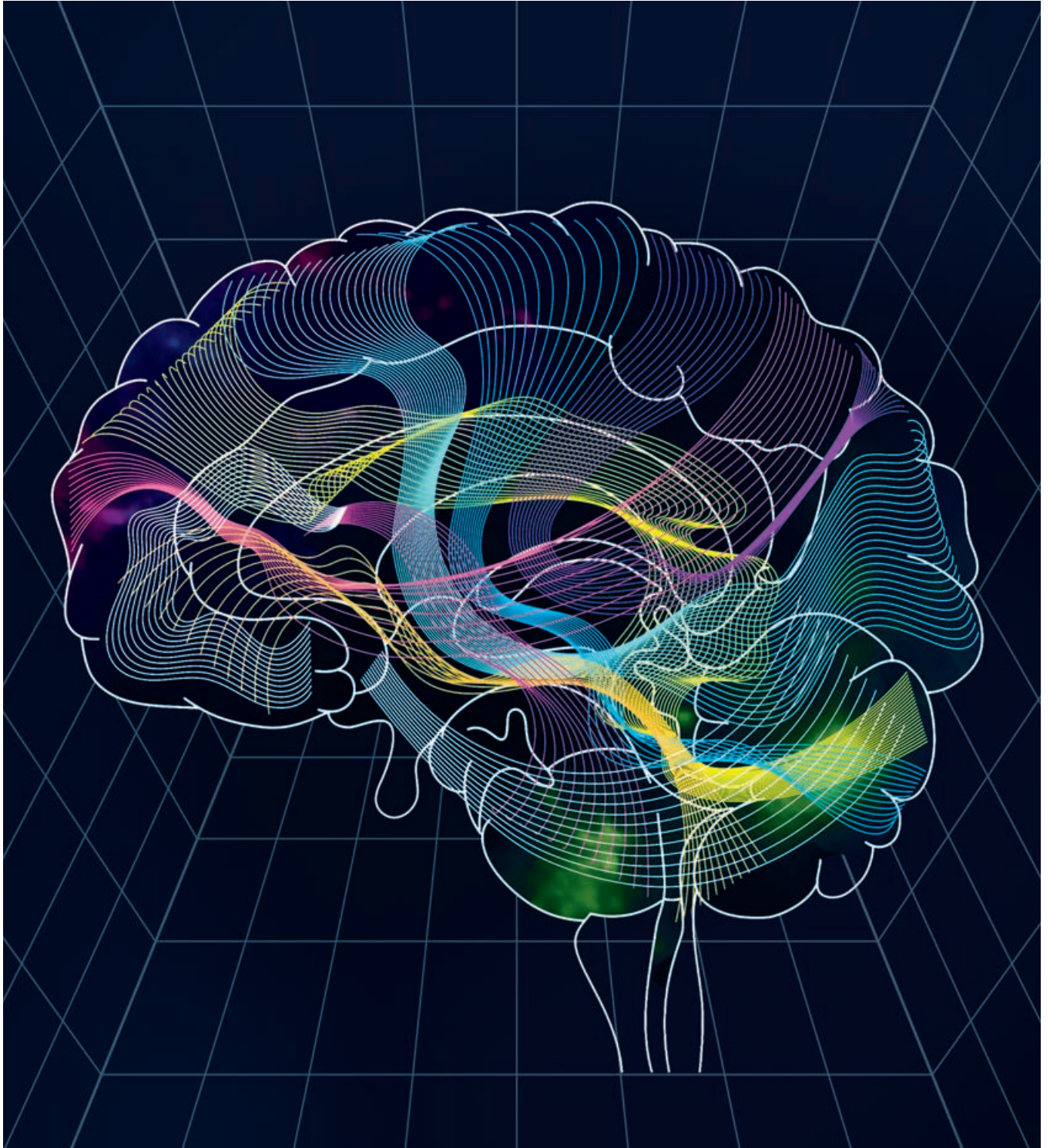
**ANJAN CHATTERJEE**

decisions, 56 case studies that explore its practical applications, and an accessible tool kit for architects and designers.

Anjan Chatterjee, the neuroscientist who helped compile the study says: "In architecture and design the focus has been on functionality. The question of how people feel in those spaces has not been given a lot of priority in the past. We're asking what are the conditions under which people flourish? And it's not confined to thinking about how we can prevent various kinds of mental health issues, but really how can we get people to be the best versions of themselves? There's not going to be a cookbook recipe. We need more rigorous research and we have to arm ourselves with more knowledge and greater understanding so that we can breed and develop new useful ideas."

Sushi Reddy, founder of Reddymade a pioneering architectural practice that focuses on human engagement and wellbeing explains why feelings in spaces matter: "Our best connections are made in amazing spaces created with certain conditions, and almost always with an emotional undertone. We really need to understand that our surroundings are not just passive backdrops. ▶







**ABOVE:** Office space using biophilic design  
**BELOW:** Google's retail store allows users to sample smart home gadgets in a simulated residential environment

**"We need to understand that our surroundings are not just passive backdrops. They're an active agent in our wellbeing"**

**SUSHI REDDY**

They're an active agent in our physical, emotional, and mental wellbeing."

The Google retail store in New York designed by Reddymade, brings technology and humanness together to create an experiential space for customers. They used shades of colour that would create a warm envelope so shoppers immediately felt at ease. It places objects in the contextual space of an at-home environment that helps consumers imagine objects in their home without being overwhelmed by the aesthetics.

In 2019 at Milan Design Week interiors firm Muuto collaborated with Google, Reddymade Architecture and Johns Hopkins University on an installation exploring the field of neuroaesthetics and how aesthetic

experiences have the potential to impact our biology and well-being. As guests entered 'A Space for Being', they were given a wristband that measured specific physical and physiological responses. They visited three rooms incorporating unique furnishings, artwork, colours, textures, lighting, and sounds. At the end of the exhibit, guests received a customised report suggesting in which space they felt "most comfortable" or "at ease," based on their real-time physiological responses.

In October 2023 Heatherwick Studio launched "Humanise" – a campaign that called for an end to 'boring, soulless buildings making the case for architecture's positive impact on social wellbeing.

The global campaign is sparking a public conversation about the way buildings make us feel. It doesn't just relate to large-scale buildings, it applies to homes, hotel lobbies or offices - anywhere with intentional colour and material choices or spaces which promote positive effect on communities.

#### **Door hardware and neuroaesthetics**

Designers and manufacturers of door handles know the thinking behind neuroaesthetics well. A handle that is tactile,

ergonomic or a certain finish to evoke a feeling is familiar in the market.

As Juhani Pallasmaa, author of *The Eyes of the Skin: Architecture and the Senses* puts it "The door handle is the handshake of the building". The handle of a building is often your first physical interaction with a space and is critical the first impression. German manufacturer FSB has spent decades researching the patterns of grip and the psychological effects that everyday objects have on our emotions. FSB advocates for coherence and putting architectural and stylistic principles in effect within a building. FSB considers door handle as 'architecture in miniature'.

Mike Holland senior partner and head of industrial design at Foster + Partners worked with FSB to develop a handle. Talking about how aesthetics have informed design he said: "There's a far greater emphasis on the tactility and craft of the pieces we develop and design. No longer do we lean on a systematic approach but instead create individually crafted objects that are beautiful to touch and use. Each handle has been designed as an object. In doing so it becomes another part of an interior and environment that because of these details becomes more human. It's ▶



# KESO 8000Ω<sup>2</sup> Cylinder Range

**KESO**

ASSA ABLOY

A new dimension of security

Experience a safer  
and more open world.



**SWISS  
MADE**



#### New modular system

Benefit from a flexible, modular system with KESO 8000Ω<sup>2</sup>. Easily adaptable on-site for various door thicknesses, its versatility includes cylinders, padlocks, and more.

#### Built to the latest standards

KESO 8000Ω<sup>2</sup> profile cylinders comply with the DIN 18252 standard and are certified according to EN 1303 and VdS. Sold Secure Gold accreditation for version 81.B.

#### Active key copy protection Ω<sup>2</sup>

Patents alone aren't enough. KESO 8000Ω<sup>2</sup> offers active key copy protection with a revolutionary moving element on the key, preventing illegal copies, including those made by 3D printing.

#### Impressive master keying capabilities

Say goodbye to bulky keychains with KESO 8000Ω<sup>2</sup>. One key operates multiple cylinders, following the principle: "The key to your world." From mechanical to electronic master key systems, manage everything with a single key and software - online or offline.

#### PATENTED UNTIL 2034



Copy Protection



Pulling Protection



Drilling Protection



Snapping Protection



VdS BZ+



Fire Door 30  
Rated



01  
Chrome nickel steel



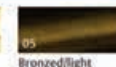
02  
Nickel plated



03  
Chrome plated matt



04  
Gold deco



05  
Bronzed/light



08  
Chrome plated glossy



38  
Matt nickel plated



Contact Keyprint on 0131 555 0909 or email [sales@keyprint.co.uk](mailto:sales@keyprint.co.uk)

[www.keyprint.co.uk](http://www.keyprint.co.uk)



**Electric Strikes**



**Electro-Magnetic Locks**



**Digital Keypads**



Contact Keyprint on 0131 555 0909 or email [sales@keyprint.co.uk](mailto:sales@keyprint.co.uk)

[www.keyprint.co.uk](http://www.keyprint.co.uk)



**ABOVE:** The living room setting at Space for Living installation

## “Neuroaesthetics now documents design’s ability to improve health. It’s an important shift in the value perception of our industry”

**MIKE PETERSON**

similar with FSB. Historically door handles have been designed with a systematic approach whereas FSB acknowledges that there’s a very diverse range of hands each with different idiosyncrasies.”

For example, when it comes to inclusivity, taking into account the needs of the neurodivergent, for example, it’s been discovered that curves, rather than hard angles, can be comforting. Andy Matthews, head of sales at HOPPE (UK) says the finer details of door hardware have risen up the agenda as we consider inclusiveness supported by the release of PAS 6463:2022 ‘Design for the mind’ BS 8300:2:2018 guidance, and The Inclusive Design Overlay to the RIBA Plan of Work.

“Employee wellbeing has become increasingly important to many businesses in recent years. Not only do buildings need to be physically accessible, but there’s a growing focus on how the built environment can affect mental health.

“The shape, feel and position of a door handle needs to accommodate all types of users within an office. The material and finish of a handle can determine how comfortable it is for the user to operate. A handle which has a nylon sleeve is considered one of the most comfortable as it is not cold to the touch. It is also worth thinking about the positioning of the handle in relation to any windows that are letting in large amounts of sunlight to prevent handles or handrails from getting too hot.

“In larger offices, neurodivergent employees may benefit from coloured handles to assist with wayfinding. A colour coding system should be consistent but not overwhelming. The use of subtle colours, which are less visually stimulating, can prevent confusion or distraction. Other considerations include the colour of the door and its surroundings.”

According to Virgin Media O2’s yearly Movers Index, 2023 was the start of the ‘great return’ as office workers returned to their normal offices after working from home. The

**BELOW:** The brain responds to colour, such as seen here on HOPPE’s Paris handle



data shows that now over 40% of employees have returned to a five-day in-office work week but many report it also means a return to the downsides of office life. The knock-on effect has been a demand for better initiatives and policies to support employees’ wellbeing. Gartner research shows that 48% of office employees believe that return to office policies prioritise what leaders want over what employees need, with a knock-on effect on wellbeing in the workplace.

### **Less friction, more wellbeing**

CodeLocks says it has been part of meeting that need. The forms of support vary from hybrid working to gym memberships or hot desking between office locations. Common to them all is the need for effortless access control and flexibility as people find their way back to shared spaces and open-plan offices. CodeLocks points out that even small details like hassle-free access or effortless key override show that when it comes to employee wellbeing, the less friction, and more flexibility, the better. As things are made easier to use, and employees are given choice in how they use them, employee morale and productivity is likely to increase.

As neuroaesthetics increasingly provides the scientific evidence of the effect of design it will give architects, designers and specifiers another way to approach clients. Mike Peterson, co-Founder of the Science of Design Summit explains: “The design industry in five years will no longer be guided by the value perception of creating pretty rooms. Science, technology and the study of neuroaesthetics now document design’s ability to improve health. It’s an important shift in the value perception of our industry.”

Home interiors director for the trend-forecasting agency Fashion Snoop sums up the value in neuroaesthetics “Through understanding the science behind design, we have the ability to create environments that are more inclusive and deliver smarter, more thoughtful solutions.” ♦



www.selectritehardware.com  
+44 (0) 1926 259307  
mail@selectritehardware.com

## JOIN OUR TEAM OF DISTRIBUTORS

We manufacture the only British-made door coordinator with global fire safety and quality certifications.

- ✓ Smart, lightweight and discrete
- ✓ Efficient international delivery
- ✓ Various finishing options available

Get access to all our marketing materials, making it simple and cost-effective to include them in your catalogue!



NEW CATALOGUE OUT NOW!



**NEW**  
**Slimline,  
Morticed  
Drop Seal  
Range  
Specially  
Designed for  
Timber Doors.**



VISIT US AT [ZEROPLUS.CO.UK](http://ZEROPLUS.CO.UK) OR CALL US ON: 01785 282910



## CONSTRUCTION MANAGEMENT | CPD

Brought to you by CIOB

### Take CM's latest CPDs

- Sustainable roofing
- How to manage ethical employment practices
- Improving design and building efficiencies
- Managing highways surface water
- Avoiding common roof defects
- Managing occupational health risks in archaeology
- Automated, mastless machine control
- Roof glazing – more than glass
- How to deliver cleaner power to construction sites
- Mechanical ventilation's role in improving indoor air quality
- Solar PV in pitched roofing applications
- Managing biodiversity on construction sites
- Head protection in construction
- Timber and the circular economy
- Drainage pumps – construction, climate change and consultancy

Keep up to date with the latest Construction Management CPDs in our dedicated online channel:

► [constructionmanagement.co.uk/cpd-modules](http://constructionmanagement.co.uk/cpd-modules) ◀



# SERIOUS ABOUT ARCHITECTURAL IRONMONGERY? PROVE IT

Globally recognised as the mark of expertise in architectural hardware, GAI qualifications are the best way to prove your knowledge and professional competence to customers and employers alike. Study with the GAI to learn and progress through the following qualifications:

- Foundation in Hardware
- Certificate in Architectural Hardware
- GAI Diploma in Scheduling
- GAI Diploma in Door Systems
- GAI Diploma in Electric Hardware & Access Control
- Certificate in Standards & Regulations
- Registered Architectural Ironmonger (RegAI)
- Registered in Door Systems (RegDS)
- Registered in Electric Hardware & Access Control (RegAC)
- Certificated Standards and Regulations Advisor (CertSRA)

From our introductory Foundation in Hardware and skill-building Certificate in Architectural Hardware courses, students have a choice of three specialist diplomas – each leading, through participation in our CPD programme, to the industry benchmark for professional competence, GAI Registered Professional status (RegAI, RegDS and RegAC).

Specialist expertise in industry standards and regulations can also be developed via the a dedicated certificate course that paves the way to the Certificated Standards and Regulations Advisor (CertSRA) status.

#### Find out more

Enrolment opens 1 July for course commencement in September 2024. Download your copy of the GAI Education Prospectus 2024-25 at [www.gai.org.uk/learning](http://www.gai.org.uk/learning)



Guild of  
Architectural  
Ironmongers



**“We’ve been able to streamline several of our processes, enhance our production efficiency and strengthen relationships with key partners”**

**DAVID SUTCLIFFE**

**David, you’re six months into your role as MD. How are things going?**

The first six months at Vanquish have been very challenging but hugely rewarding and I’m really enjoying it. I’m pleased to say that we’ve hit the ground running and that’s certainly been helped by the incredible team.

We’ve been able to streamline several of our processes, enhance our production efficiency, and strengthen relationships with key partners. We’ve been carrying out building works to accommodate our investments in new machinery, most notably a new sheet extrusion line to run our graphite materials as well as additional cutting technologies to the conversion side.

We’ve also strengthened the team and made some key appointments, including a new operations manager, a warehouse supervisor and some team leader promotions internally. It’s been an intense period but I’m confident that we are on course to achieve our strategic goals this year.

**The game has changed for ‘fire products’; how has your business had to adapt?**

With regards to the changes in passive fire protection, there haven’t been any new changes to standards per se.

However, there are still talks about the removal of British standards from building ►

# Burning ambition

David Sutcliffe managing director of Vanquish UK tells **AIJ** about his plans for the business



**ABOVE:** Some of the hardware products available from Vanquish

**“We are confident we can expand to other passive fire protection products, not focus solely on the fire doorset market”**

**DAVID SUTCLIFFE**

regs, specifically BS476:22. This will affect the number of companies testing products to EN1634:1. This is regarded as a more onerous test and hardware protection is more commonplace with EN testing. With this we forecast a larger demand for hardware protection products. We have adapted by increasing our production capacity by 30%.

We have also seen an increase in customers who wish to see third-party accredited products, this offers peace of mind to clients as they can be sure they are purchasing a consistent product that will perform to the specification.

We've spent a lot of time and money in research and development of new intumescent compounds that are higher performing, have increased fire-retardants, and a stronger resultant char. This means our products can be used in a greater variety of applications. We are confident we can

expand our product range to other passive fire protection products and do not have to focus solely on the fire doorset market.

**Training and education has always been key for Vanquish too, hasn't it?**

We believe that education is vital to ensuring compliance within the passive fire protection market. Unfortunately, we still encounter people who do not understand our products or do not think they are essential components for fire doorsets.

To combat this, we have been working closely with the GAI, IFSA, and other industry bodies to inform the end user of the importance of hardware protection.

**At the time of your appointment, you mentioned intentions to innovate. Can you tell us more?**

Innovation is a big part of what we do at Vanquish. We've launched several initiatives to drive product innovation and improve our services. We're exploring further new and improved materials and technologies to make our intumescent products and offerings even better and we're particularly interested in creating more eco-friendly hardware protection that meets safety standards and supports sustainability.

We've also invested in a new MRP (Material Requirements Planning) system to streamline our production, reduce waste,

and boost efficiency. These innovations, along with our new cutting technologies and the building upgrades are setting us up for a bright future and I'm really excited with the direction the business is going in.

**What else is a key focus for Vanquish right now?**

Right now, a key focus for us is expanding our market presence and reinforcing our reputation as a leader in hardware protection. We're working on growing our distribution network to reach new markets both in the UK and abroad.

Customer satisfaction remains a top priority, of course, so we're enhancing our customer service to provide more responsive and personalised support. I truly believe in partnering with our customers and to enhance their product ranges and bring additional benefits wherever possible.

Investing in our people is also crucial, as they are at the core of the business. We're committed to ongoing professional development to ensure our team has the skills and knowledge to drive us forward. This combined with everything else is a part of our broader strategy to meet growing customer demands more efficiently. ♦

[www.vanquish-hp.co.uk](http://www.vanquish-hp.co.uk)

**BELOW:** Vanquish manufacturers FlexiFire® – a graphite-based intumescent material.





# TECHNICALLY SPEAKING

Through our website Knowledge Base, the GAI supports member companies with a wealth of technical information and advice.



## 1. Technical Briefings

Regular briefings on relevant industry topics. Everything from BIM to BS and EN standards to UKCA Marking are covered.

## 2. GAI Guides to Standards

A library of more than 20 guides to the most relevant British and European standards which impact the ironmongery industry.

## 3. Quarterly Technical Review

Published four times a year to provide the proposed timetable for changes, amendments or revisions to BS and EN standards, as well as keeping members informed on any new relevant publications or consultations.

## 4. GAI Specifier's Guides

A complete set of guides relating to ironmongery and access control product for the construction industry. These are aimed at assisting all who are involved in the specification process from the architect, architectural technician, interior designer, M&E consultant right through to the specifying architectural ironmonger. Topics covered include ironmongery in a post-pandemic world, the internet of things, accessibility, access control and ironmongery for fire and escape doors.

## 5. BIM Product Data Templates (PDTs)

A series of 34 templates which are available for GAI members to populate with product information to create Product Data Sheets – this will assist with having your product ranges "BIM ready".

## 6. RIBA Approved CPDs

The GAI now has ten CPD presentations which have been approved by RIBA and are all available to GAI member companies for their architects and specifiers. These cover a broad spectrum of topics from accessibility right through to internet of things. As these have been approved by RIBA they are all worth double points to RIBA members.

For further details contact GAI Technical Manager Douglas Masterson on [technical@gai.org.uk](mailto:technical@gai.org.uk)

# Dear GAI...

With so many changes affecting our industry how is the Guild using its influence to be a voice for its members?

**Douglas Masterson** answers the question



**In addition to providing benefit to our members**, the the GAI also has a part to play by representing the ironmongery sector across a broad spectrum of wider construction industry activities. This includes leading the way in industry consultations; participation on standards committees in UK and internationally; significant involvement in the competency agenda work post Grenfell and advocacy on behalf of the GAI membership.

## Industry consultations

One recent example of significant work on consultations was when GAI, working alongside the BSI public information symbols committee, PH/8/2, issued a survey in early 2024 to assess public and industry opinion on the international symbol for accessibility (currently depicted by a wheelchair) and the potential for it to be replaced by a new symbol. This was an important question to be asked as the potential impact for not just the ironmongery and construction industry, but wider society would be massive should the symbol be replaced.

This was a strong indicative poll with 248 responding who were widely UK based and who were a broad cross section of industry with a significant amount of professional

bodies, charities and trade association members within. GAI members made a sizeable contribution to the poll.

A slim majority of those who responded (114 vs 108 with remainder unsure) felt that the wheelchair symbol should not be replaced and the status quo maintained.

# 248

**responded to a survey to assess public and industry opinion on the international symbol for accessibility**



ABOVE: the proposed new accessibility symbol

On the question of the acceptability of the proposed new symbol, the overwhelming majority of respondents felt that it did not depict accessibility and that should the symbol be replaced that this should not be it. (208 against vs 12 for - with remainder unsure)

The results of the survey have been passed to BSI who will be feeding this back to ISO for further consideration on whether the symbol be replaced and if so whether the proposed symbol is the correct one. GAI was pleased to play its part in channelling the strong feeling on acceptability of this proposed symbol to ISO through its work in BSI.

## Participation in standards work

GAI makes a significant contribution to the world of standards on a continual basis. This is at both UK and international level. In addition to representing the industry on British, European and ISO standards committees, at any given time GAI will be involved in specific drafting panels of a number of standards. GAI is currently actively involved in the following standards:

- BSI – BS 8214 (Fire doors), BS 9991 (Fire safety in design), BS 8670/2 (Competence in Construction Products), BS 8300 (Accessibility), BS 3621,8621,10621 (Locking devices) and PAS 24

(security of doorsets and windows).

- CEN – EN 1906 (Lever handles), EN 17210 (Accessibility) prEN standard (Data dictionaries).

- ISO – New standard on vocabulary on door hardware.

Our participation in this work, in addition to chairing the influential BSI Committee B538/4 for building hardware means that GAI members are not only represented, but also continually kept informed as to what is happening in this world. This is a major benefit as our industry is massively influenced by both voluntary and mandatory standards.

### Advocacy

GAI continues to work closely with UK Government across a number of departments and has strong links with OPSS the UK National Construction Products

Regulator. The recent proposed changes to Approved Document B in respect of BS 476 22 is an example of where GAI consulted its membership and then conveyed the strong feelings in this regard to UK Government. Whilst there is the potential still for BS 476 22 to be removed from ADB, there is also a potential scenario for assessments to be retained which is being explored. Further discussions will be held in relation to this once the new UK Government is settled and GAI remain a key stakeholder in this area.

### UK competency agenda

GAI continues our involvement in this by leading the way as an association which has pioneered the demonstration of competency since its inception. GAI represents the construction product industry at Industry Competence Steering

**“GAI issued a survey to assess opinion on the symbol for accessibility. This was important to ask as the impact would be massive should the symbol change”**

**DOUGLAS MASTERSON**

Group level (which is now within the remit of the UK Building Safety Regulator). It also co-chairs WG12 on competence in construction products and is a member of WG7 the Designers Competency Group. Lessons being learnt from this work will be implemented in the ironmongery industry through the GAI Industry Competence Working Group which is currently producing a series of Competence Frameworks for key ironmongery sector functions such as specifying, estimating, manufacturing and selling.

### GAI member voice

GAI is pleased to make its members voices heard across industry. These voices are harnessed through those who participate in: member surveys and consultations; GAI Industry Committees such as Technical, Education and Community as well as working groups such as Sustainability and Competence. Anyone wishing to engage further with GAI is advised to keep an eye out for opportunities to participate in any of these when the opportunity arises. ♦

**An online quiz based on this feature is available on the GAI learning Hub. Completion of this quiz is worth one CPD point. <https://learninghub.gai.org.uk/totara/dashboard/index.php>**



## GAI TALK

## Rachael Bliss

GAI chief executive



It is with great pleasure that I write this as the new chief executive of the GAI.

Very new in fact; I have only been in post for a few weeks. But what has already been very evident is the great passion and energy the Guild draws from its members. I hope to have met many of you by the time you read this, and I will be making every effort to meet as many members as possible over the coming months.

Of course I'm not the only new arrival in post this summer. The UK General Election resulted in a change of government and, like many industries, architectural ironmongery has been waiting to establish exactly what this might mean for us. What we need, of course, is certainty and consistency to support long-term business planning, and the early signs in this respect are encouraging.

First, we finally have clarity on the proposal to remove BS 476 22 from Approved Document B in England. The long transition period for this is welcome, as are the arrangements to ensure that products already testing to the BS 476 standard can continue to be used during the transition period. And despite the huge disruption and costs already incurred as a result of the on-off proposals for UKCA marking, we do at least now have confirmation of an extension beyond 2025 to the recognition for CE marking of construction products.

The criticality of the regulatory landscape and all matters relating to the safety of the built environment has just been starkly underlined by the publication of the Grenfell Report. This landmark document will undoubtedly become a guiding light for our continuing work with members, government and construction industry partners on setting and raising standards throughout the sector. As we do so, our thoughts will be first and foremost with the families and communities affected by this wholly avoidable tragedy.

# GAI Community...



## Get ready for the 44th GAI Education Awards

Booking is now open for the 44th GAI Education Awards, to be held at London's Grand Connaught Rooms on Thursday 28 November.

This flagship event in the annual architectural ironmongery calendar will celebrate the outstanding achievement of the industry's rising stars, with the award of qualifications and prizes to successful candidates from the 2023/24 education programme. This will include those receiving the GAI's stage 3 qualifications: the Diploma in Scheduling (DipGAI); Diploma in Door Systems (DipDS); Diploma in Access Control & Hardware (DipAC); and Certificate in Standards and Regulation (CertSRA). The top-performing students in the Certificate in Architectural Hardware (CiAH) will also receive prizes.

GAI training and development manager Rachel Tipton said: "Now in their 44th year, the GAI Education Awards are the industry's biggest and best celebration of training, skills and career development.

"The awards are the industry's best celebration of training, skills and career development"

**RACHEL TIPTON**

"We are delighted to welcome Robust UK as our main event sponsor, and are looking forward to joining everyone in the superb Grand Connaught Rooms on 28 November."

The Grade II\* listed De Vere Grand Connaught Rooms are an iconic event venue in London's Covent Garden. With a history dating back to 1775, the building – once home to the original Freemasons' Tavern – has hosted some of the world's leading politicians, royalty and celebrities within its grand Georgian architecture and art-deco interiors.

## GAI welcomes its new chief executive

Rachael Bliss has joined the GAI as its new chief executive officer. Rachael joined the Guild in July from the Chartered Institution of Water and Environmental Management (CIWEM). She brings to the role wide experience in the not-for-profit, membership association and education sectors.

As a Chartered Manager who completed her own postgraduate studies through a Level 7 senior leader degree apprenticeship, Rachael has put skills and professional training to the top of her GAI agenda.

Rachael said: "If the architectural ironmongery industry is to successfully meet the profound challenge of the Building Safety Act, it has never been more important to focus on the development of skills, knowledge, and demonstrable professional competence.

"Equally important is the Guild's work with specifiers, designers, contractors and the wider construction industry – helping them to understand not only the contribution this sector makes to the quality of the built environment but also the criticality of the skills and competences exemplified by GAI registered professionals.

"The GAI sets the global gold standard in these areas, and I look forward to working

**"It has never been more important to focus on skills, knowledge and demonstrable professional competence"**

**RACHAEL BLISS**



with GAI members and the staff team to build further on this strong foundation."

GAI President Kaz Spiewakowski said: "We are delighted to welcome Rachael during what is an important and exciting period for both the industry and the Guild.

"Rachael's experience with both membership and education bodies makes her a great fit with the Guild's core work. I know she is looking forward to meeting members and working with them on the many challenges facing our sector.

"I would also like to extend the Guild's thanks to David Stacey who stepped into the role of interim managing director at the start of this year, and to our staff team who have supported him so well over that time."



### Meet Simon Ayers, new GAI community executive chair

#### What is on your agenda in your role as Community chair?

I have three key goals. The first is to improve communication, to explore the options for feedback and learn what is preventing people from getting involved in community. Secondly I want to increase the involvement of members with hubs; and lastly I will be an active participant. I want to be seen by all hub ambassadors and all community members.

#### What is the value to members of community

It's a huge member benefit. It offers support, help and advice and the chance to network with peers. I can point to my own experience to promote how it can help an individual's career. There are many learning opportunities to take advantage of as well as fun and social interaction.

#### How can members get the most out of GAI community offer

There are various ways to make community offer work for you. You can attend events, engage with local hubs, volunteer for roles, and contribute to surveys so you have your say and use your voice.

## Meet a Member: David Barden DipGAI DipAC RegAI project manager John Planck



### What made you choose a career in architectural ironmongery?

I went into engineering after I left school as an apprenticeship with British Rail but it just did not seem a good fit for me. A good friend who worked at an architectural ironmongery company at the time, offered me the chance to interview for an external sales representative position, which I did and 25 years later I am still working in the industry.

### What do you love about the industry?

I have always enjoyed the fact that no two projects that I work on are the same. One month I could be working on a high-end residential project refurbishing a 100-year-old building and the next month it could be a completely new build of a modern commercial building.

### Tell us about your role?

My role in the company is to run the projects that we have successfully secured until completion; I can deal with anyone from the architect to the site teams and will facilitate whatever is required to get the job over the line. These projects can run anywhere from a few months to a couple of years, depending on their size and complexity; and with the bespoke nature of the ironmongery that is often specified for these projects, they can be very challenging to manage and complete.

### What specification/schedule/product are you most proud of and why?

I have been lucky enough to be involved with some very special projects over the years, but the rejuvenation of London's

“With the bespoke nature of the ironmongery these projects can be challenging to manage and complete”

Royal Opera House (otherwise known as the Open Up project) is the one I am most proud to have been a part of.

From the architect and contractors that we worked with, to the initiative products that were specified and supplied; it really was a special project and one that was visually outstanding when it was finished.

### What do you do in your spare time?

Having two young children keeps me very busy but I also like to play golf which I enjoy very much, as it enables me to switch off from the pressures of work.

**BELOW:** The Royal Opera house





NO SWAN SO FINE

## Safety, security, and history: Wales Hub CPD

Following the success of last year's Welsh Hub Factory Tour of EBD Steel Doors, the Welsh Hub and EBD once again teamed up to co-host the Surelock McGill CPD Presentation, this time at the iconic Maltings venue in Cardiff.

The Maltings, a Grade II listed Victorian Malthouse which now serves as a business venue, blends historical elements with modern functionality including inclusion of EBD's steel doors and PWIDF's timber doors and ironmongery.

Surelock McGill provider of protection solutions against forced entry, blast and ballistic threats, fire containment, and life safety egress, delivered an insightful CPD on "Life Safety and Security Standards".

The presentation underscored the critical importance of staying ahead in an industry characterised by rapid technological advancements. A key takeaway was the affirmation that safety and security can coexist without compromise to compliance.

The evening also raised funds for A Shining Light – a school-based community charity raising Money for Teenage Cancer Trust.

Speaking about the event Shaun Brown of the GAI Wales Hub said: "The event successfully combined professional development, historical appreciation, and charitable efforts. It provided an opportunity to gain essential knowledge, network with industry experts, and support a worthwhile cause."

**ABOVE:** The Maltings venue in Cardiff hosted the Welsh hub CPD

**"The event successfully provided an opportunity to gain essential knowledge, network with industry experts, and support a worthwhile cause"**

**SHAUN BROWN**

## Enrol now for 2024/25 GAI courses



Enrolment is open for the GAI's 2024/25 education programme. With courses now getting underway, learners are encouraged to enrol as soon as possible for the GAI's Certificate in Architectural Hardware (CiAH), three Diploma courses (Diploma in Scheduling (DipGAI); Diploma in Door Systems (DipDS); and Diploma in Electric Hardware & Access Control (DipAC)), and the Certificate in Standards and Regulation (CertSRA).

Enrolment for the introductory Foundation in Hardware course remains open year-round as always, with a new Foundation in Doors launching this September followed by new modular introductory courses covering fire door hardware, seals, and escape door hardware (see p.xx).

GAI training and development manager Rachel Tipton said: "There has never been a greater focus than now on the skills, knowledge and demonstrable professional competence of those working in our sector.

"The GAI education programme responds to that growing challenge with the only globally-recognised architectural hardware, door system and access control qualifications to BS EN standards." For more details, to download the full 2024/25 prospectus, and enrol, visit [www.gai.org.uk/LEARNING](http://www.gai.org.uk/LEARNING)

"There has never been a greater focus than now on the skills, knowledge and competence of those working in our sector"

**RACHEL TIPTON**



## GAI launches company member survey

**The GAI has launched a survey to gather the views of its company members.**

**As well as looking for feedback on member services and activities, the survey provides an opportunity to make suggestions to shape the future of the Guild.**

**The survey is open to GAI Corporate, Affiliate, Enterprise and Associate members and should be completed by each company's membership administrator. It opens in September and will run until the end of October.**  
[www.gai.org.uk/SURVEY](http://www.gai.org.uk/SURVEY)





THE ALL-NEW

# Architectural Ironmongery Specifier Resource Book

Your guide to the **projects, companies** and **professionals** setting the standard in contemporary architectural ironmongery.



This free 78-page guide from the Guild of Architectural Ironmongers (GAI) is an unmissable source of information and reference.

Explore best practice in architectural ironmongery with the winning entries from this year's **RIBA/GAI Specification Awards**. Read the latest updates on professional competence, skills and industry standards. And find the very best companies and **Registered Professionals** to support your project with a complete **GAI member directory**.

Just one of the free resources available on the GAI website for architects, designers and specifiers throughout the construction sector.

Get your copy today at [www.gai.org.uk/SPECIFIER](http://www.gai.org.uk/SPECIFIER)



Guild of  
Architectural  
Ironmongers

# Chance your arm

The door that produced the well-known idiom



**In 1492 two Irish families, the Butlers of Ormonde and the FitzGeralds of Kildare,** were involved in a bitter feud. The disagreement centred around the position of Lord Deputy. Both families wanted one of their own to hold the position. This tension broke into outright warfare and a small skirmish occurred between the two

families just outside Dublin's city walls. The Butlers, realising that the fighting was getting out of control, took refuge in the Chapter House of St Patrick's Cathedral. The FitzGeralds followed them into the Cathedral and asked them to come out and make peace. The Butlers, afraid that if they did so they would be slaughtered, refused.

'They shook hands through the door and today it is known as the 'Door of Reconciliation'

As a gesture of good faith the head of the Kildare family, Gerald FitzGerald, ordered that a hole be cut in the door. He then thrust his arm through the door and offered his hand in peace to those on the other side. Seeing that FitzGerald was willing to risk his arm by putting it through the door the Butlers reasoned that he was serious in his intention. They shook hands through the door, the Butlers emerged from the Chapter House and the two families made peace. Today this door is known as the 'Door of Reconciliation' and is on display in the Cathedral's north transept. This story also lives on in a famous expression 'to chance your arm'. ♦

**BELOW:** A.D. 1492—The reconciliation of the Earls of Kildare and Ormond, in St Patrick's Cathedral





# SERIOUS ABOUT ARCHITECTURAL IRONMONGERY?

## PROVE IT

The Guild of Architectural Ironmongery (GAI) supports, assures and represents architectural ironmongers, wholesalers, manufacturers and others working in and alongside the sector.

Membership of the GAI demonstrates your company's commitment to highest standards of technical excellence, professional competence and regulatory compliance.

### Join the GAI today for:

- 50% off fees for the GAI's renowned education programme – the only one in the world leading to qualifications in architectural ironmongery to British and European standards.
- Specialist technical resources, advice and support.
- Regular networking opportunities to help you expand your professional network, make new contacts, and help shape the industry.
- Free business support services to save your company £££ on HR, legal, health & safety, and recruitment.
- Attractive discounts, free publications including AIJ magazine, and much more!

To find out more about GAI membership, email [membership@gai.org.uk](mailto:membership@gai.org.uk) or visit [www.gai.org.uk/membership](http://www.gai.org.uk/membership).



Guild of  
Architectural  
Ironmongers

# FIRE KIT

**Codelocks achieves CE marking for industry-leading range of access control solutions with certified locks and latches.**

Codelocks has secured CE marking for its mortice locks and tubular latches, establishing an extensive range of access control solutions and fire door assemblies with CE-certified locks and latches. This achievement provides specifiers, installers, and end-users with comprehensive quality assurance, fire safety, and legal compliance across a broad selection of access control products.

- ✓ Tested to meet safety, health, and environmental standards.
- ✓ Obtained CE marking for locks and latches through testing.
- ✓ Tested in accordance with BS EN 1634-1.
- ✓ Providing users quality assurance, fire safety, and legal compliance.
- ✓ Install to ensure compliance with 30 and 60 minute timber doorsets.
- ✓ CE mark on lock and latch component.



**Keep Compliant with the Codelocks FireKit**

- Easy to fit.
- For new and existing installations.
- Pack contains shaped pads of intumescent strips and tubes.
- Tested in accordance with BS EN 1634-1.
- Install to ensure compliance with 30 and 60 minute timber doorsets.



codelocks.com  
sales@codelocks.com  
01635 239 645



© 2024 Codelocks International Ltd. Registered in England & Wales. All Rights Reserved.  
The Codelocks Control + Convenience logo and NetCode® are registered trademarks of Codelocks Ltd., registered in the United Kingdom, United States and other countries and regions.

